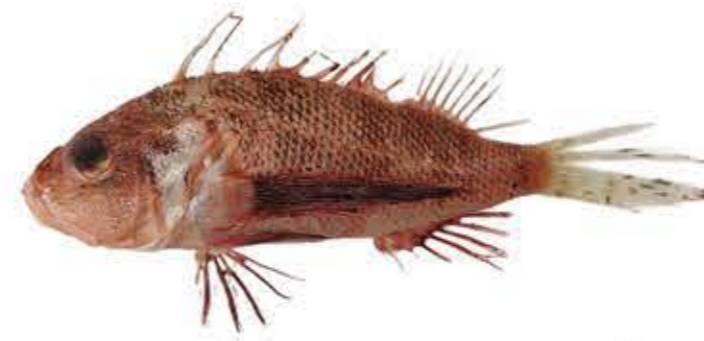




Bembrops caudimacula
Steindachner, 1876
Tailspot duckbill
186-500 m



Bembrops platyrhynchus
(Alcock, 1894)
Natal duckbill
200-549 m



Brachypterois serrulata
(Richardson, 1846)
Sawcheek scorpionfish
170-420 m



Chelidoperca investigatoris
(Alcock, 1890)
Investigator perchlet
220-340 m



Chelidoperca occipitalis
Kotthaus, 1973
Arabian perchlet
180-320 m



Cociella crocodilus
(Cuvier, 1829)
Crocodile flathead
300 m



Grammoplites suppositus
(Troschel, 1840)
Spotfin flathead
170-420 m



Lepidotrigla faurei
Gilchrist & Thompson, 1914
Scalybreast gurnard
50-180 m



Lepidotrigla omanensis
Regan, 1905
Oman gurnard
56-329 m



Lythrichthys longimanus
(Alcock, 1894)
Red deepwater scorpionfish
180-704 m



Minous dempsterae
Eschmeyer et al., 1979
Obliquebanded stingfish
200-400 m



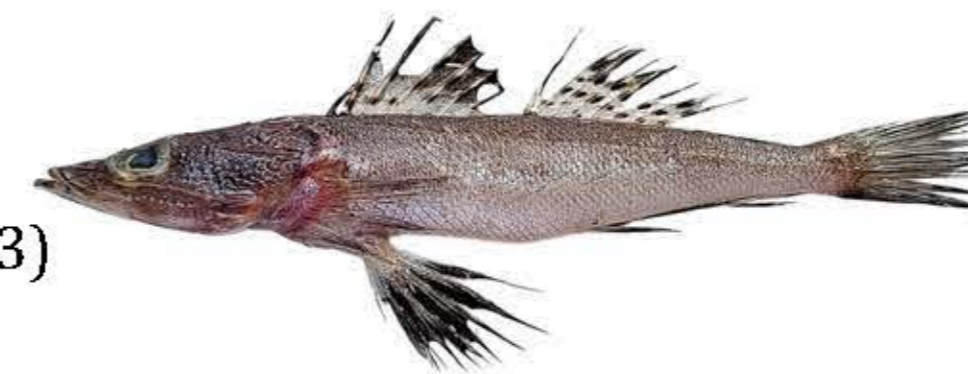
Minous inermis
Alcock, 1889
Alcock's scorpionfish
18-420 m



Parapterois macrura
(Alcock, 1896)
Scorpionfish
64-430 m



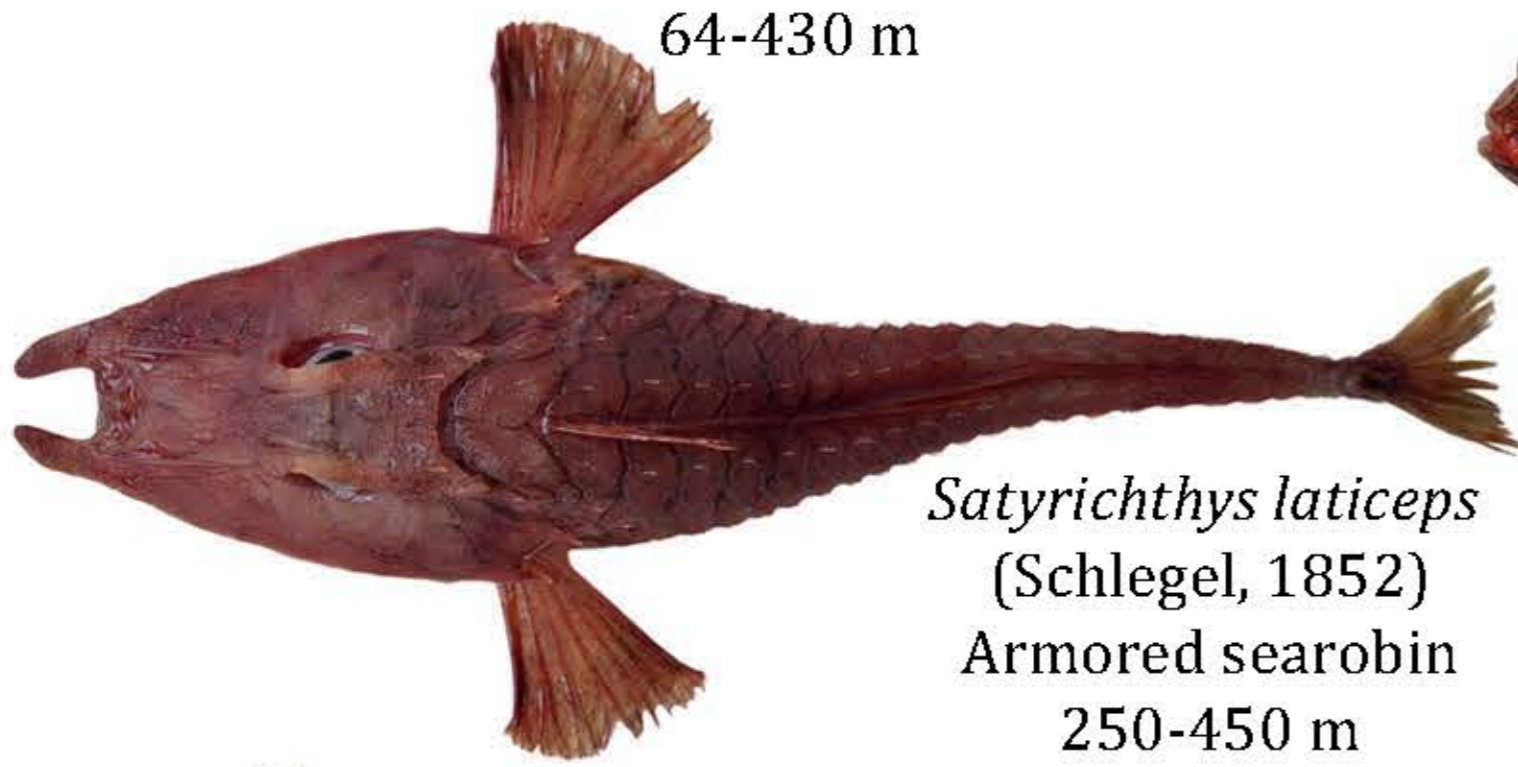
Pterygotrigla hemisticta
(Temminck & Schlegel, 1843)
Blackspotted gurnard
170-420 m



Ratabulus tuberculatus
(Cuvier, 1829)
Tuberculated flathead
170-420 m



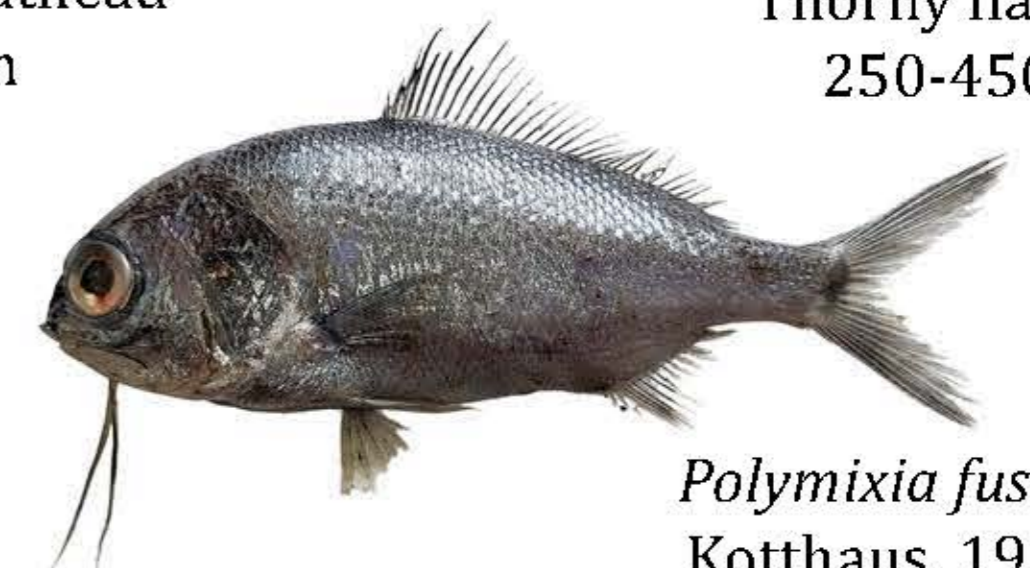
Rogadius pristiger
(Cuvier, 1829)
Thorny flathead
250-450 m



Satyrichthys laticeps
(Schlegel, 1852)
Armored searobin
250-450 m



Snyderina guentheri
(Boulenger, 1889)
Gunther's waspfish
170-420 m



Polymixia fusca
Kotthaus, 1970
Beardfish
250-450 m



Ariomma indica
(Day, 1871)
Indian driftfish
20-300 m



Cubiceps whiteleggii
(Waite, 1894)
Shadow driftfish
180-550 m



Neopinnula orientalis
(Gilchrist & von Bonde, 1924)
Sackfish
200-570 m



Promethichthys prometheus
(Cuvier, 1832)
Roudi escolar
80-800 m



Psenopsis cyanea
(Alcock, 1890)
Indian ruff
179-300 m



Rexea bengalensis
(Alcock, 1894)
Bengal escolar
143-820 m



Trichiurus auriga
Klunzinger, 1884
Pearly hairtail
250-350 m



Trichiurus lepturus
Linnaeus, 1758
Largehead hairtail
100-350 m



Tentoriceps cristatus
(Klunzinger, 1884)
Crested hairtail
30-300 m

Prepared by : **Rekha J. Nair, Eldho Varghese, J. Jayasankar, Pooja M. Uthrad, Suyani Nitin Kanji, Anzeena Azeez, Stephy Terry, Keerthana P. S, Nahil Alikutty, Surya S., Rajesh K. M & Rajni Jain**

Central Marine Fisheries Research Institute, P. B. No. 1603, Ernakulam North P. O., Cochin- 682 018

Project: Automated Identification of Marine Species with Artificial Neural Networks to Enhance the Exploration and Sustainable Utilization of Deep Sea Marine Fishes
DOM Vertical III (MoES/PAMC/DOM/83/2023 (E-16048))

CMFRI Poster No.73/2026

Design and Layout : Pooja M Uthrad