

## A comparative study of Marine Fisher-folk census 2005 and 2010 of Tamil Nadu

Pugazhendi, D.

Madras Research Centre of CMFRI, Chennai

The Central Marine Fisheries Research Institute regularly undertakes Marine Fisheries Census for all the maritime states of the country. Based on the census report of Tamil Nadu state a comparative study focusing mainly on population, fishing villages, landing centres, sex ratio, religion, BPL, education and occupation was carried out for two census period viz. years 2005 and 2010. The study was aimed to find correlational statistics, salient features and significances over the two study periods.

The Tamil Nadu coastal line extends over 1078 km and consists of 13 coastal districts. The boundary starts at Arambakkam village in Thiruvallur district in the north end and ends at Neerodi in Kanyakumari district in the south. This state is one of the foremost in India showing unflinching increase in marine fish production and fishermen of the state are in pioneer

in adopting many innovative technologies in their fishing activities. The state of Tamil Nadu has 1.9 lakh sq. km of Exclusive Economic Zone (EEZ), continental shelf of 41,412 sq. km. and 383 fish landing centers. The state constantly contributes more or less 10% of marine fish landings to the country and exports 77,791 mt of fish worth Rs 2995 crore.

**Population:** The fisher-folk population has been recorded during the years 2005 and 2010 are 790408 and 802912 respectively. The average family size was maintained even after five year period as 4.1 and average person per village has marginally increased. The adult population of male and female have increased by 3.85% and 3.4% respectively and the children population decreased and in particular the population of female children decreased considerable further. Of the total fisher-folk

Table 1. Fishing Villages, Landing Centres, family size, total population

District	Landing Centres		Fishing Villages		Fishermen families		Fisher-folk population		Average Family Size	
	2005	2010	2005	2010	2005	2010	2005	2010	2005	2010
Thiruvallur	14	18	30	26	9630	7544	36775	28109	3.82	3.73
Chennai	12	14	43	44	18809	15176	75166	67464	4.00	4.45
Kanchipuram	38	42	42	42	7723	8469	27962	29974	3.62	3.54
Villupuram	19	18	19	19	4416	4720	16093	18124	3.64	3.84
Cuddalore	28	44	47	42	12840	12714	48705	48518	3.79	3.82
Nagapattinam	41	41	56	57	22643	21122	91415	84369	4.04	3.99
Thiruvarur	0	3	13	13	2956	2580	11827	9995	4.00	3.87
Thanjavur	25	25	31	31	7087	6530	30482	29489	4.30	4.52
Pudukottai	20	30	33	33	6791	6398	29921	29663	4.41	4.64
Ramanathapuram	80	90	180	178	38800	41048	175421	193413	4.52	4.71
Tuticorin	22	27	31	32	18671	19998	78487	82560	4.20	4.13
Tirunelveli	9	9	9	9	4381	6132	19615	24639	4.48	4.02
Kanyakumari	44	46	47	47	37405	40266	148539	156595	3.97	3.89
Total	352	407	581	573	192152	192697	790408	802912		

population, Ramanathapuram district has retained the first place during the periods with increase in numbers by 2%, similarly the Kanyakumari district retained the second position with same trend of increase by 1%. The Thiruvallur district was last in the list but improved by a marginal decrease (Fig 1.).

**Sex Ratio:** In the year 2005, average female to male ratio was 948. The Kancheepuram district has the highest value of 1009 and the Pudukottai district has remained as last district with lowest value of 921. The average sex ratio in the year 2010 was 939, and was maximum in the Chennai district which

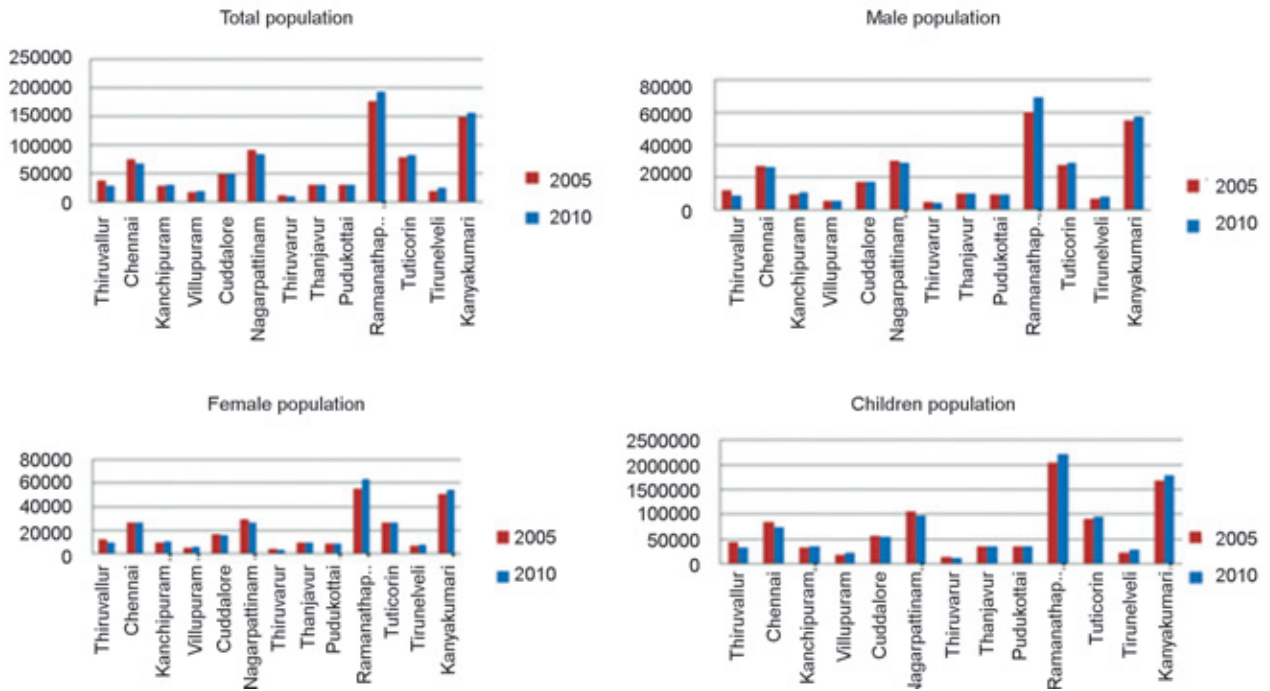


Table 2. Male, Female and Child population distribution

District	Male Adult		Female Adult		Male Children		Female Children		TOTAL	
	2005	2010	2005	2010	2005	2010	2005	2010	2005	2010
Thiruvallur	12020	9134	12014	9417	6558	4908	6183	4650	36775	28109
Chennai	27151	26475	26929	27229	10957	7118	10129	6642	75166	67464
Kanchipuram	9592	10757	10004	10478	4321	4624	4045	4115	27962	29974
Villupuram	5420	5561	5560	5736	2625	3724	2488	3103	16093	18124
Cuddalore	17227	17219	16505	16336	7695	8127	7278	6836	48705	48518
Nagarpattinam	30099	28738	29050	26984	16918	14929	15348	13718	91415	84369
Thiruvarur	4648	3978	4383	3626	1388	1221	1408	1170	11827	9995
Thanjavur	10281	10215	10090	9640	5070	4785	5041	4849	30482	29489
Pudukottai	9320	9795	8478	9085	6255	5741	5868	5042	29921	29663
Ramanathapuram	60009	69338	55540	63821	31193	31648	28679	28606	175421	193413
Tuticorin	27815	28798	26391	27213	12324	13642	11957	12907	78487	82560
Tirunelveli	7117	8415	6669	7911	2991	4392	2838	3921	19615	24639
Kanyakumari	54857	57735	51234	54298	21939	23150	20509	21412	148539	156595
Total	275556	286158	262847	271774	130234	128009	121771	116971	790408	802912

recorded 1008 and minimum in Pudukkottai district which was 909 showing a marginal decrease by 12.

**Landing Centres and Fishing Villages:** A total of 581 fishing villages were recorded in the year 2005 where as in the year 2010 the number was decreased by 8. Even though the number of fishing villages has been decreased over the period, the number of landing centres have been increased by 55, making a total of 407 in the year 2010.

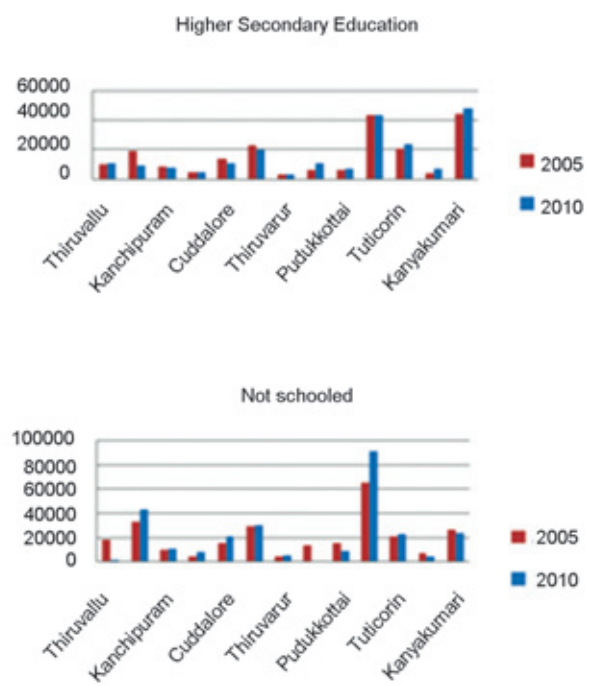
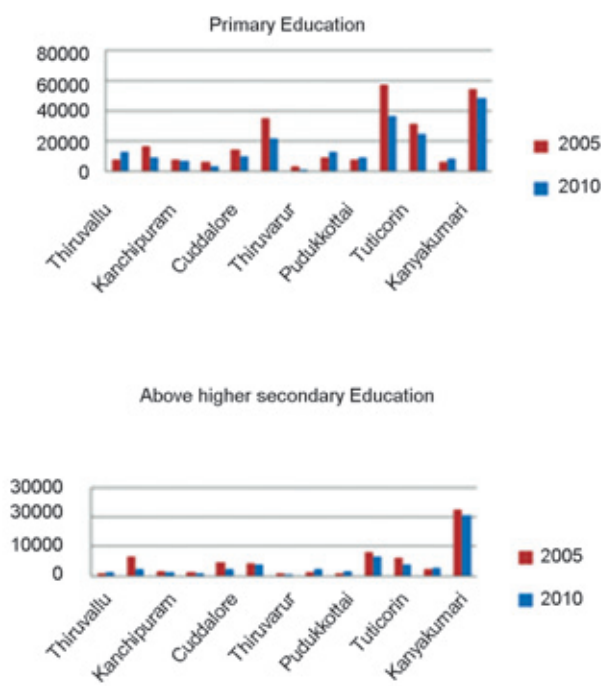
**Religion:** Hindus constituted 59% and 56% for the years 2005 and 2010 respectively. The Christian and Muslim population had been grouped by a cluster by marginal increase of Muslim and considerable increase of Christianity. The SC/ST population has also increased a bit by less than a percentage. The southern districts of Tuticorin, Tirunelveli and Kanyakumari fishermen are over-weighted by Christianity and rest of the districts by Hindus.

**BPL:** The latest survey reveals that 66% of families fall below poverty line (BPL). The Villupuram districts acquired disfavor status of first place as 99.9% followed by Kancheepuram (99.6%) while Kanyakumari district is the last with only

18.9%. The 2010 general survey reveals that 15.8% of population is BPL families in Tamil Nadu despite India estimates for the year 2011-12 was 21.9% by Planning Commission of India.

**Education:** The unfair curve of literacy shows increasing unschooled strengths in 2005 and 2010 as 33% and 37% respectively. Primary education has been decreased by 5% whereas higher secondary level increased by 2% and above higher secondary level also marginally decreased. On the whole literacy level has been decreased by 4% (Fig 2.).

**Occupation:** The full time fishermen density over the periods had increased from 89% to 93%, whereas the fishermen engaged in part time and allied activities were decreased by 2%. Of the total fishermen population, the active fishing activities considerably increased by 8%. The fisher-folk were found to engage in allied activities such as marketing, repairing/making nets, curing/processing, peeling, labours and other related activities. The deviation from fishing activities in Chennai district has been reduced to 1513 persons; while in Kanyakumari district it got increased by 1731 persons (Fig. 3).



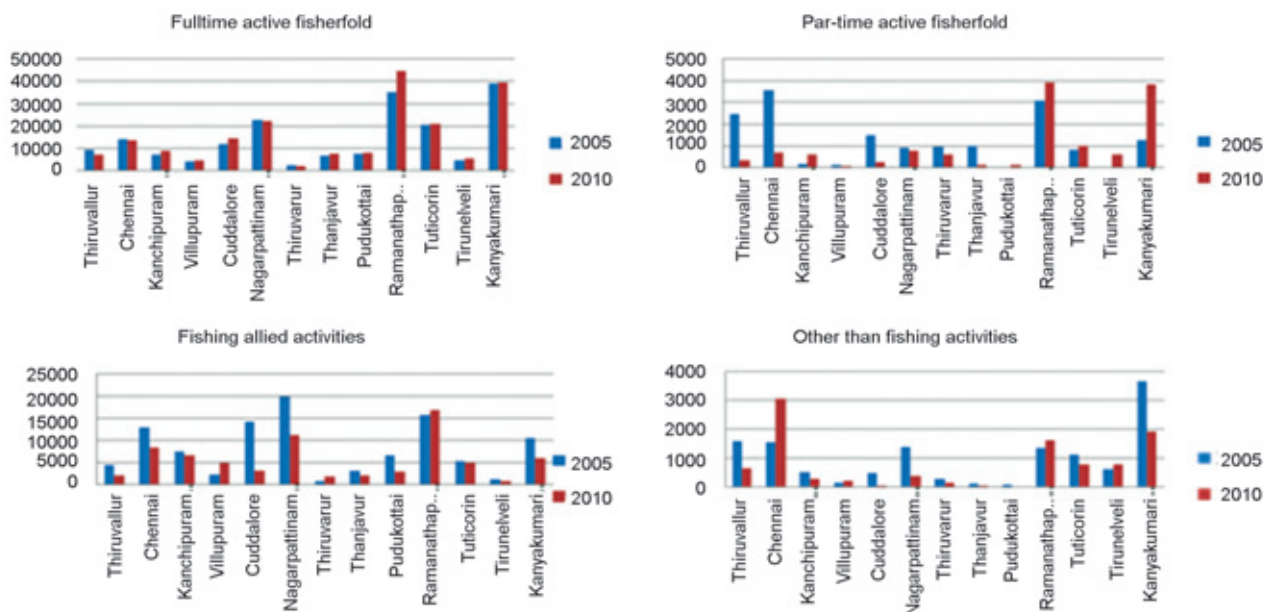


Table 3. Active fishermen

District	Full Time		Part Time		Fishing Allied Activities		Other Than fishing	
	2005	2010	2005	2010	2005	2010	2005	2010
Thiruvallur	9346	7198	2478	328	4437	2089	1584	626
Chennai	14080	13678	3590	708	12883	8389	1551	3064
Kanchipuram	7122	8835	150	625	7580	6645	519	285
Villupuram	4152	4599	111	97	2180	4754	129	216
Cuddalore	11885	14376	1498	260	14274	3098	481	32
Nagapattinam	22470	22229	932	804	19996	11215	1388	370
Thiruvarur	2550	1975	948	612	624	1852	282	143
Thanjavur	6842	7383	1010	135	3134	2012	109	51
Pudukottai	7638	8083	12	139	6526	2935	57	0
Ramanathapuram	35174	44815	3066	3938	15826	16886	1350	1618
Tuticorin	20565	20759	844	988	5199	4836	1100	767
Tirunelveli	4651	5334	50	608	1223	808	619	758
Kanyakumari	39128	39592	1265	3836	10627	6022	3648	1917
Total	185603	198856	15954	13078	104509	71541	12817	9847

Other observations during the survey were like reduction in child population and relocation of some villagers to adjacent or nearby villages due to developmental activities in their places of origin. The number of landing centres were increased due owning of fishing boats, nets and availability of common infrastructure provided by Tsunami relief to the affected fisher-folk.

There is not much change in the number of full time active fishermen except in Ramanathapuram

district. In Kanyakumari district, the part time active fishermen number increased more than two folds and fulltime as well as part time active fishermen considerably increased in the Ramanathapuram district. As far as the fishermen engaging in fishing activities are concerned, it is observed that many fishermen are diverting themselves away from fishing activities in Chennai district while in Kanyakumari district, a reverse trend is seen.