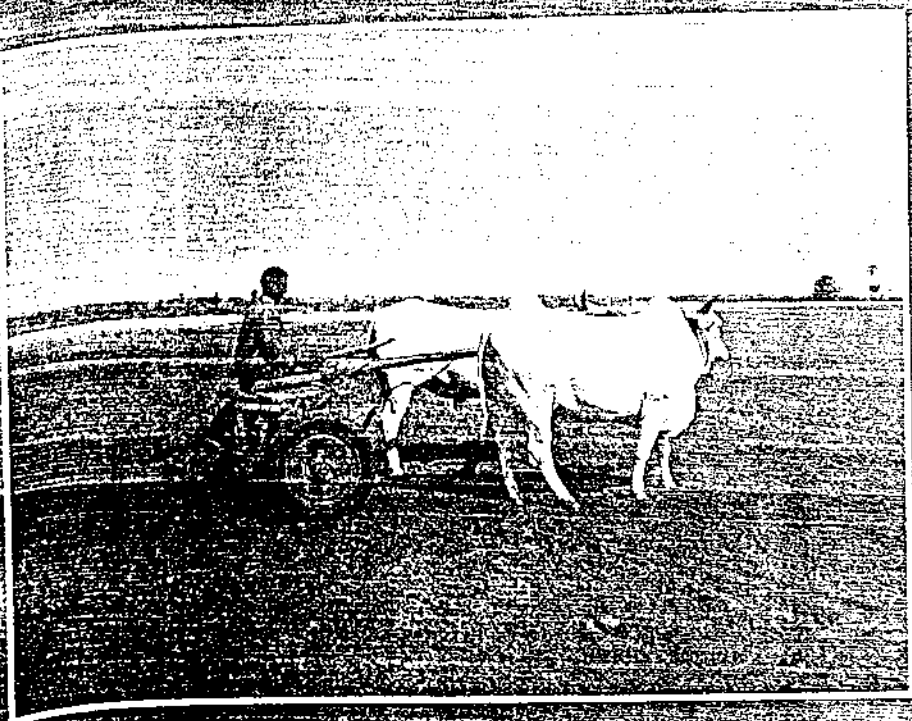


DIRECTORY OF RURAL TECHNOLOGIES

Part IV

Edited by
Mathew C. Kunnunkal
Bharat R. Sanit



NATIONAL INSTITUTE OF RURAL DEVELOPMENT

Plot 1, P. O. Chittoor, District Chittoor, Andhra Pradesh - 500 030, India

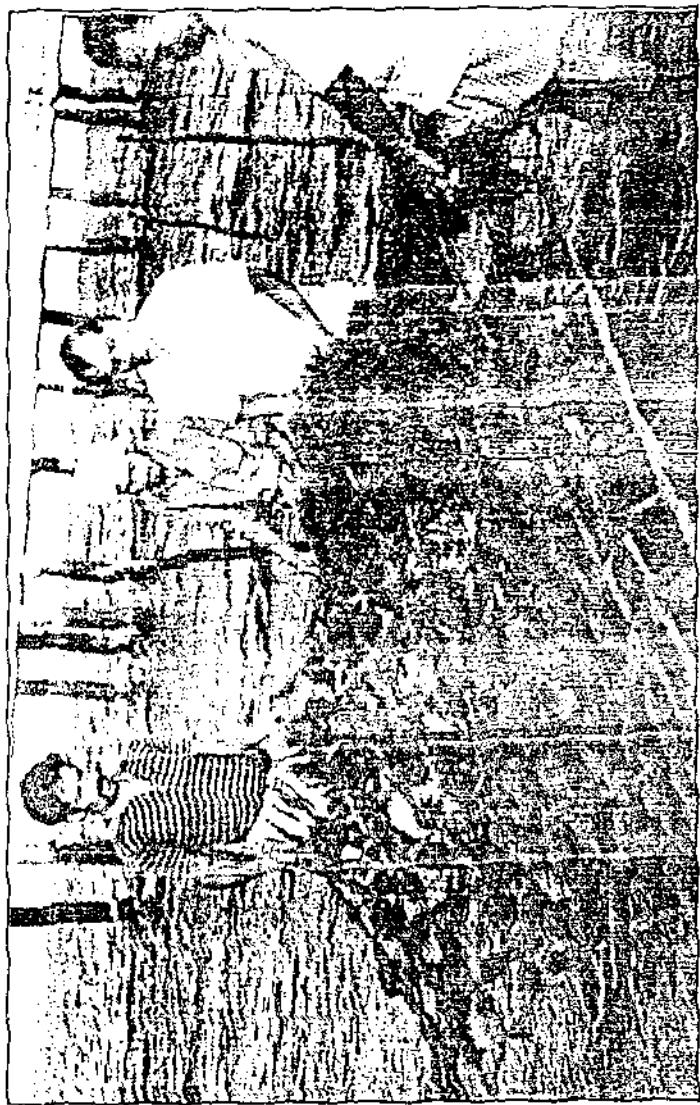
22

MEN

end
208

40. SEAWEED CULTURE

1. *Name of Product/Process* : Seaweed, *Gracilaria edulis* (Mariculture)
2. *Application/Use* : The weed is edible (gruel/porridge can be made from dry fronds). It can also be used as an important raw material for agar industries in India
3. *Brief description and Salient features of technology/process* : Seed material (fresh fronds) used for propagation has to be collected from natural seaweed beds where *Gracilaria edulis* occurs eg. Gulf of Mannar, Palk Bay, Gulf of Kutch, Tuticorin. The seed materials are suspended from grow out structures like floating rafts (made from coconut palm rope) erected in the shallow estuarine areas/sea. The weed grows vegetatively and reaches a harvestable size in about three months. Harvesting is done manually by cutting. After washing, the material is sun-dried. The technology is easy to adopt, does not need any fertilisers or pesticides, and is eco-friendly. Grazing has to be prevented by encircling the culture site with stakes of net.



Seaweed culture

4. *Raw Materials* : Bamboo/casuarina poles, nylon/coir ropes, floats, seed material
5. *Machinery/Equipment* : Nil
6. *Status of technology (not commercialised/ commercialised/in production)* : Not commercialised
7. *Minimum economic unit and total investment* : One hectare; Rs. 4 lakh
8. *Technology transfer methodology* : By setting up demonstration farms and conducting training programmes
9. *Technology demonstration-cum-training facilities* : Yes. At Regional Centre of CMFRI, Mandapam, Ramanad District, Tamil Nadu 623520
10. *Product acceptability* : Acceptable by industries
11. *Marketability* : High demand as per our survey of 50 industries. Awareness has to be created about the availability of the seaweed
12. *Is this technology location-specific? If so, please elaborate* : Yes. Water at the culture site should not be stagnant. The seaweed shows good growth and survival in bays, lagoons and estuaries with salinity not less than 24 ppt, mild water flow and good tidal exchange
13. *Any gender-bias in technology utilisation?* : No. Women and unskilled personnel can easily adopt this

14. *Is any video-cassette available on the technology?* : No
15. *Any other relevant information not covered above* : This technology has approved by the DOD funded as a coastal v linked programme of se culture in Ramnad Dist Tamil Nadu
16. *Terms and conditions for technology transfer* : On consultancy basis ICAR/CMFRI norms
17. *Name and address of technology generating institute/individual* : Director, Central Fisheries Research Institu Box No. 1603, Kochi 68 Kerala.
18. *Name and address of technology transfer agency, if different from above* : Same as above

22

For further details, contact :

Dr. P. Kaladharan, Scientist, Central Marine Fisheries Research Instit
 PO Box No. 1603, Kochi 682 014, Kerala.
 Phone: 0484-394867; Fax: 0484-394909;
 Email: mfdcmfri@vsnl.com