

# CMFRI RESEARCH VESSEL LAUNCHED

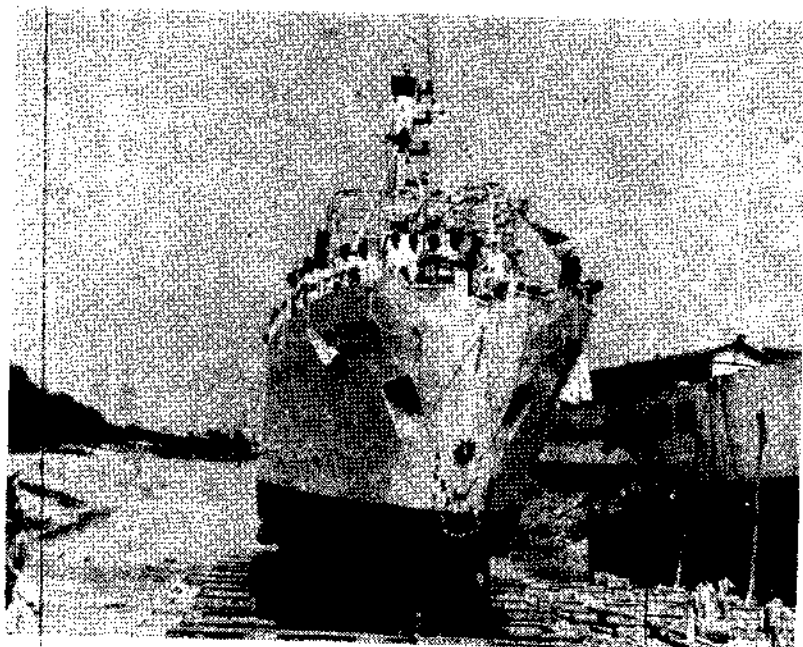
RV SKIPJACK, the first Research Vessel of CMFRI was launched at Calcutta on 7 November, 1980 at a simple ceremony attended by Dr. E. G. Silas, Director of the Institute. The keel of the Vessel was laid earlier by Dr. M. S. Swaminathan to fulfil the longfelt need of the Institute. The Vessel is built by Garden Reach Shipbuilders Engineers at a cost of over 2 crores of Rupees. This 107' Vessel is powered by 750 HP Garden Reach Mann Engine. It has an accommodation for five scientists and a crew of 11 members and an endurance of 25 days. The Vessel is provided with hydraulic deck machinery imported from Norway and can do purse - seining, midwater and bottom trawling at a depth of 1000 metres. She is being fitted up and will be ready for fishing trilas by May



*Mrs. Meera Sarkar (w/o Commodore A. K. Sarkar, Chairman & M. D. GRSE, Calcutta) applying tilak on R. V. Skipjack at the launching ceremony.*

1981. Regular cruises are expected to commence from June. The Vessel will be used for

research in fishery hydrography over the entire Exclusive Economic Zone.



*Skipjack sliding to the water*



*Dr. E. G. Silas, Director, CMFRI Speaking on the Occasion*