

- Pillar (mast) fixed at the bottom could be removed at the end of each fishing season
- Efficient handling and the provision to tow an additional net
- Heavy catch could easily be towed up
- Low maintenance charges
- Longlines and gillnet operations are also facilitated

Parasites of shrimps and crabs from the Chennai coast

S. Lakshmi Pillai* and P. Thirumilu

Madras Research Centre of CMFRI, Chennai

*Central Marine Fisheries Research Institute, Kochi

Bopyrids and *Sacculina* are typical parasites of crustaceans especially in shrimps and crabs. Bopyrids form the largest family of isopods and attach themselves to the gills of shrimps. *Sacculina* belongs to the order, Rhizocephala, an order of specialised barnacles. They are found as a mass of tissue, extending from the abdomen of crabs, this portion being termed as 'externa'.

The parasites were detected during the regular weekly sampling of shrimps and crabs landed by trawl nets at Kasimedu (Madras) Fishing Harbour. Sixty five females (total length range: 63-103 mm) and 50 males (total length range: 56-95 mm) of *Metapenaeopsis stridulans*, two males of *Metapenaeopsis mogiensis* (71 and 99 mm in TL), five specimens (three females, 55-85 mm TL and two males, 70 and 72 mm TL) of *Parpenaeopsis stylifera* and one specimen of *Parpenaeopsis maxillipedo* (120 mm in TL) infected with bopyrids were obtained in trawl catches from September 2006 to March 2008. The bopyrid parasite was identified as *Epipenaeon ingens*. The female is oval in shape (Fig.1).

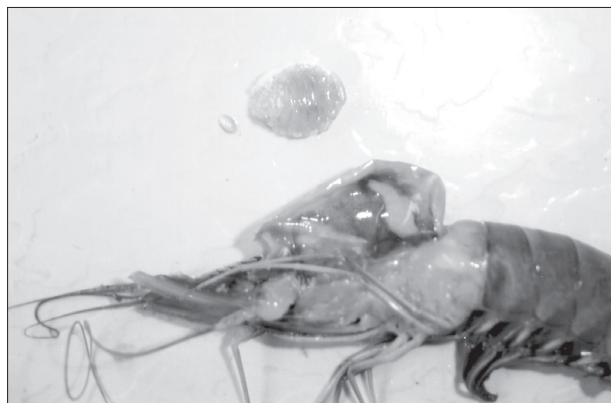


Fig. 1. Bopyrid parasites (female and male)

They ranged in size from 6-14 mm in total length and 7-10 mm in breadth. Males have a longer body with minute head. They ranged in size from 2.1 to 4.25 mm. All the four species were found with 63.87% infection (38.69% females and 25.18% males), immature shrimps, contributed 45.19%, maturing, 39.08% and mature, 15.8%.

Sacculina spp. were observed in 85 specimens of *Portunus sanguinolentus* (ranging in carapace width 38-115 mm), 20 numbers of *Charybdis lucifera* (carapace width range: 52-91 mm), seven numbers of *Charybdis natator* (carapace width, 55-139 mm), 13 *Portunus argentatus* (carapace width range, 52-95 mm), 3 *Podophthalmus vigil* (carapace width range, 58-94 mm) and a single specimen of *Charybdis feriata* (carapace width 146 mm). *Sacculina* with *Lepas* attached to it was found infesting *P. vigil* (Fig. 2). One percentage of the crabs were also observed to possess two "externa". *Sacculina* were first observed in crabs in the month of June, 2005 and later it was found to be prevalent in almost all the months in different species of crabs.

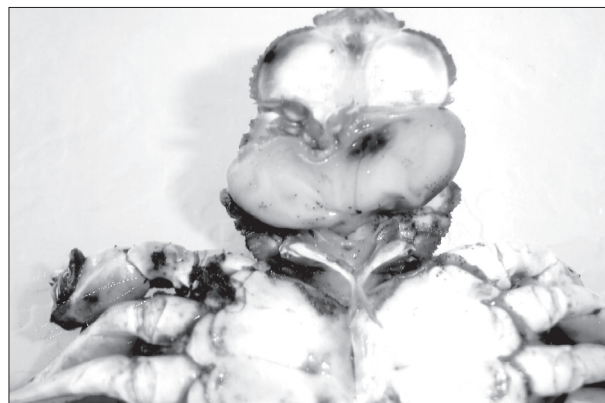


Fig. 2. *Sacculina* on crab along with attached *Lepas*

The wide prevalence of parasites noticed may be due to changes in the environmental parameters like water temperature, dissolved oxygen, salinity etc., which may have an impact on the survival of

these parasites. The reason for their infestation as well as proliferation and the possible effect on the hosts physiology warrants further detailed studies.

Unusual landing of *Trachinocephalus myops* by trawlers at Visakhapatnam Fishing Harbour

Madhumita Das

Visakhapatnam Regional Centre of CMFRI, Visakhapatnam

On 7.11.2008 unusual landings of the lizardfish *Trachinocephalus myops* (bluntnose lizardfish) was recorded at Visakhapatnam Fishing Harbour by multiday trawlers. The lizardfish landings at Visakhapatnam Harbour is usually dominated by *Saurida undosquamis* and *Saurida tumbil*. However, other lizardfishes viz., *S. micropectoralis*, *S. longimanus* and *T. myops* are also recorded.

Occurrence of *T. myops* along the coast of Visakhapatnam is seasonal. During the year 2006-'07 the annual average production of *T. myops* was 2.4% of the total lizardfish production at Visakhapatnam. Females ranged in size from 136 to 228 mm and males from 142 to 145 mm in total length.

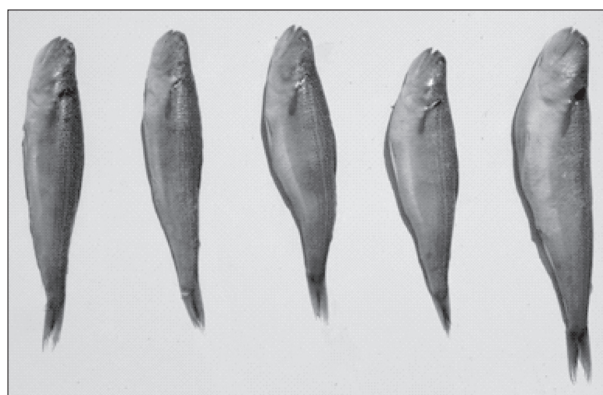


Fig. 1. *Trachinocephalus myops*

Stranding of a Dolphin (*Stenella longirostris*) at Thalikulam Landing Centre, Thrissur District, Kerala

K. G. Baby

Central Marine Fisheries Research Institute, Kochi

A female dolphin, *Stenella longirostris*, was stranded in dead condition near Thalikulam Landing Centre (Thrissur District, Kerala) on 25.04.2009

(Fig. 1). The animal weighed around 80 kg, length of body was 198 cm and it was found in semi-decomposed condition.

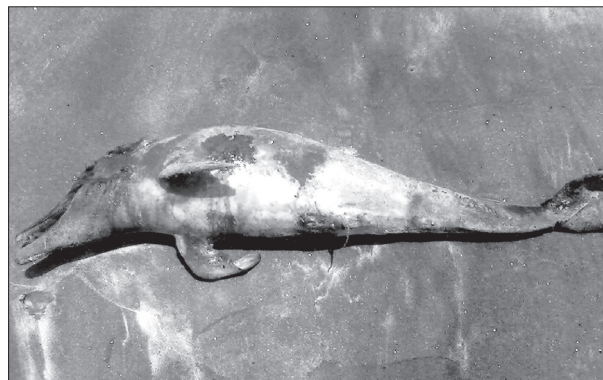


Fig. 1. Dead stranded specimen of *Stenella longirostris* at Thalikulam