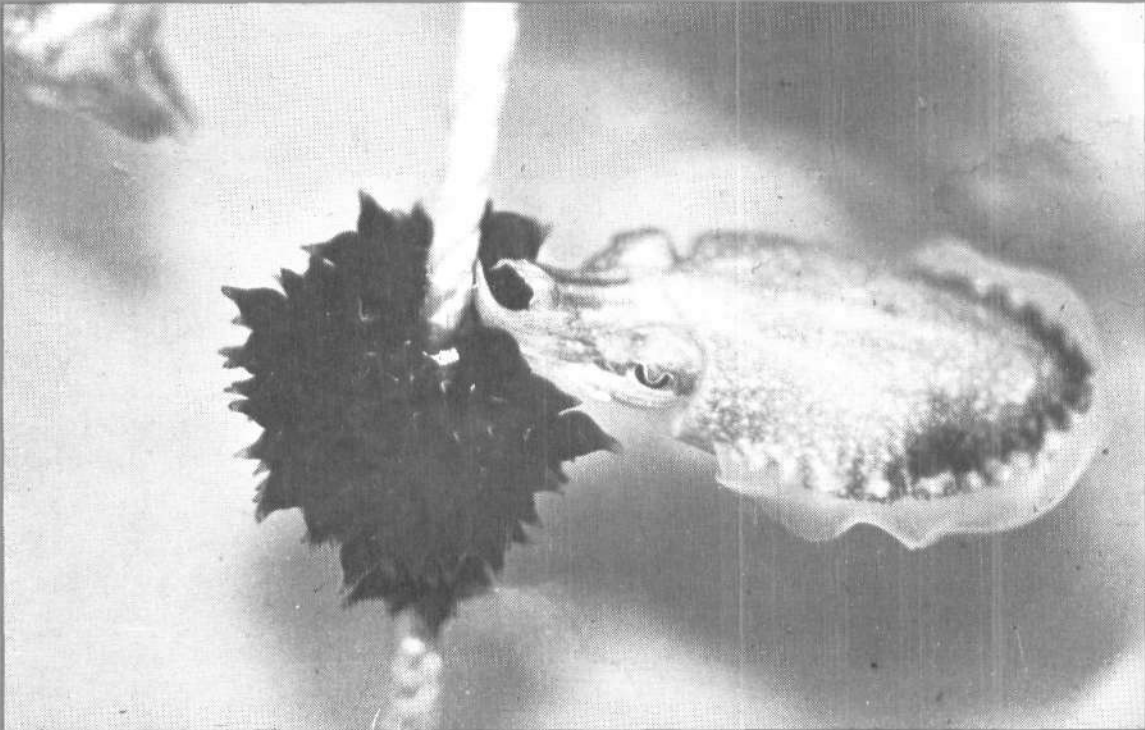




समुद्री मात्स्यकी सूचना सेवा MARINE FISHERIES INFORMATION SERVICE

No. 159

JANUARY, FEBRUARY, MARCH 1999



तकनीकी एवं TECHNICAL AND
विस्तार अंकावली EXTENSION SERIES

केन्द्रीय समुद्री मात्स्यकी CENTRAL MARINE FISHERIES
अनुसंधान संस्थान RESEARCH INSTITUTE
कोचिन, भारत COCHIN, INDIA

भारतीय कृषि अनुसंधान परिषद्
INDIAN COUNCIL OF AGRICULTURAL RESEARCH

898 On the stranding of a rare marine dolphin at Vizhinjam

On sighting a dolphin struggling for survival in the nearshore area off Adimalithura (near Vizhinjam) on 31-08-1998, the fishermen encircled it with a shoreseine. It was a rare marine Risso's dolphin, *Grampus griseus* (Cuvier, 1812), measuring 250 cm in length. In spite of the medical treatments given for the injuries, it survived in the Marine Aquarium at Vizhinjam for about 13 hrs only.

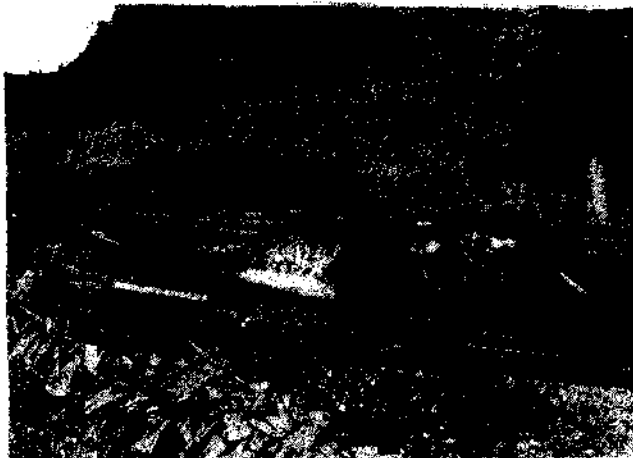


Fig. 1. The Risso's dolphin stranded at Vizhinjam.

The morphometric measurements in cm and the other details are as follows :

Total length (snout to notch of caudal flukes)	250
Tip of the snout to blowhole	41
Tip of the snout to centre of eye	35
Tip of the snout to anterior insertion of flipper	52
Tip of the snout to centre of anus	169
Notch of the fluke on the outer curvature	38
Notch of the fluke to centre of anus	86

Length of the fluke on the outer curvature ...	29
Length of the fluke on the inner curvature ...	42
Distance between the extremities of fluke	58
Width at insertion of fluke	33
Length of dorsal fin base	35
Vertical height of dorsal fin	41
Length of flipper from anterior insertion to tip	49
Length of flipper along the curve of lower border	36
Greatest width of body at anal region	39
Depth of body at anal region	18
Depth of body at the origin of flipper	45
Depth of body at the origin of dorsal	40
Depth of body in the region of eye	35
Tip of the lower jaw to the centre of anus	163
Length of upper jaw	27
Length of lower jaw	25
Diameter of the eye	3
Distance between the genital opening and anus	24
Total number of teeth on one side of upper jaw	Nil
Total number of teeth on one side of lower jaw	3
Sex	Male



Fig. 2. The head of Risso's dolphin showing the injured portion and teeth on the lower jaw.

Weight in kg (approx.)	150
Length of intestine	2,270
Length of copulatory organ	35

Reported by : R. Thiagarajan, A.P. Lipton, G. Gopakumar, S. Krishnapillai, B. Raju, J. Selvin and A.N. Rajan. Vizhinjam Research Centre of Central Marine Fisheries Research Institute, Vizhinjam - 695 521, India.
