



# MARINE FISHERIES INFORMATION SERVICE



No. 55

JANUARY, 1984

*Technical and Extension Series*

CENTRAL MARINE FISHERIES RESEARCH INSTITUTE

COCHIN, INDIA

INDIAN COUNCIL OF AGRICULTURAL RESEARCH

**THE MARINE FISHERIES INFORMATION SERVICE:** Technical and Extension Series envisages the rapid dissemination of information on marine and brackish water fishery resources and allied data available with the National Marine Living Resources Data Centre (NMLRDC) and the Research Divisions of the Institute, results of proven researches for transfer of technology to the fish farmers and industry and of other relevant information needed for Research and Development efforts in the marine fisheries sector.

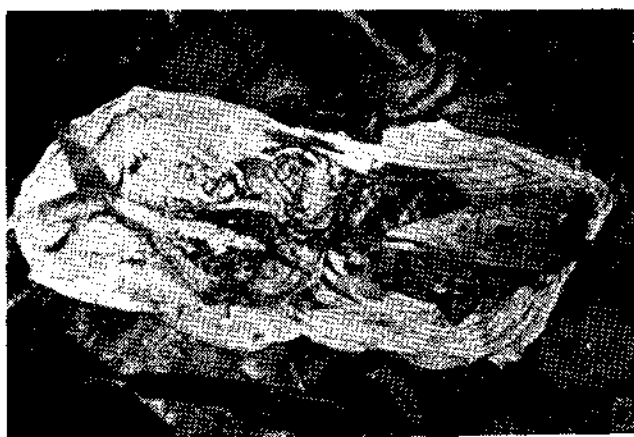
Abbreviation – *Mar. Fish. Infor. Ser. T & E Ser.*, No. 55: 1984

### 3. Capture of a false killer whale *Pseudorca crassidens* at Port Blair, Andamans

On 27-7-76, when one of the mechanised fishing vessels belonging to the Andaman and Nicobar Administration set gill nets off Maduban near Port Blair two false killer whales belonging to the species *Pseudorca crassidens* (Owen) were entangled. One of them, however, escaped when trying to bring them ashore.



Distance from the tip of the snout to anterior insertion of the flipper	57
Breadth of flipper	20
Length of flipper	43
Width of the body	66
Breadth of the dorsal fin	43
Height of the dorsal fin	23
Distance between the posterior margin of the flipper and the anterior margin of the dorsal fin	71



False killer whale has a world wide distribution. It is a truly oceanic form and is gregarious in nature, moving in schools. The present record (Fig. 4) is the first of its occurrence from the Andaman Sea.

Some of the measurements (in cm) of the whale are given below:

Total length	396
Distance from the tip of the snout to the origin of dorsal	139
Distance from the tip of the snout to the eye	48
Distance from the tip of the snout to the angle of mouth	33

Distance from the posterior margin of the dorsal fin to the notch of the caudal fluke	183
Width of the caudal fluke	23
Length of the largest tooth	10
Diameter of the blow-hole	5

When the stomach was cut open the head of a Barracuda and tail portion of a Carangid fish were found in semidigested condition (Fig. 5).

Reported by D. B. James

