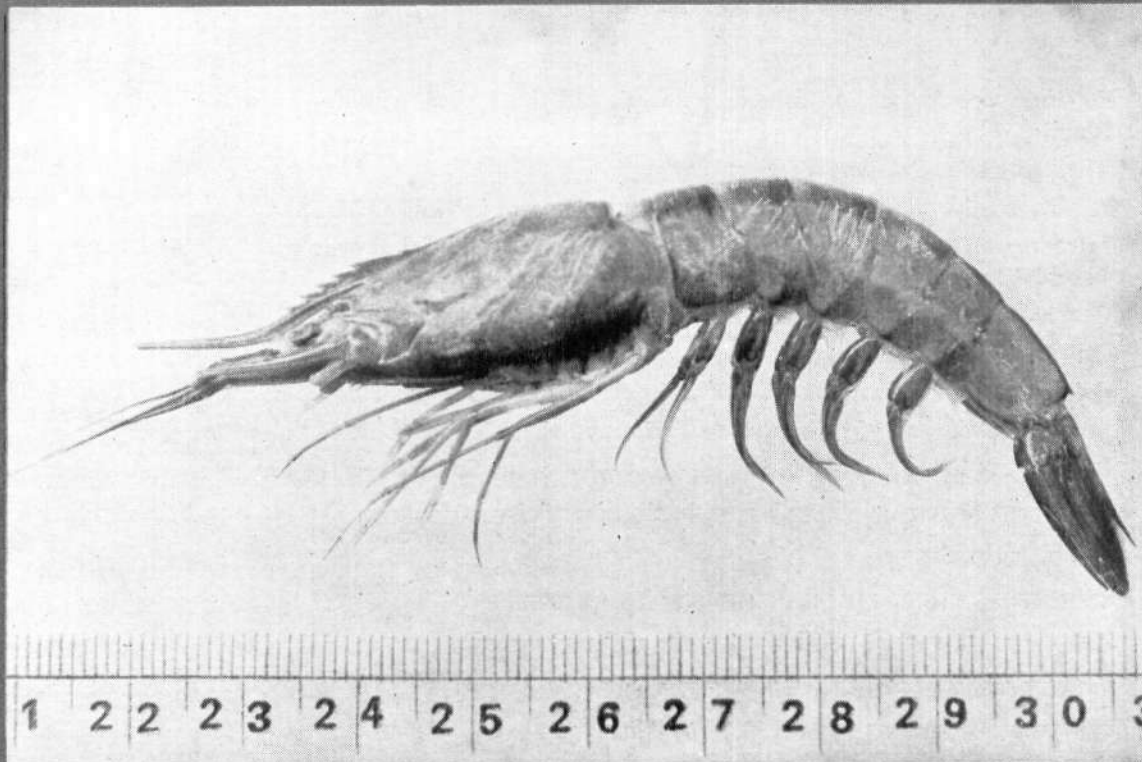




# समुद्री मात्स्यिकी सूचना सेवा MARINE FISHERIES INFORMATION SERVICE

No. 102

DECEMBER 1989



तकनीकी एवं विस्तार अंकावली TECHNICAL AND EXTENSION SERIES

केन्द्रीय समुद्री मात्स्यिकी अनुसंधान संस्थान  
CENTRAL MARINE FISHERIES RESEARCH INSTITUTE  
कोचिन, भारत COCHIN, INDIA

भारतीय कृषि अनुसंधान परिषद  
INDIAN COUNCIL OF AGRICULTURAL RESEARCH



## **INTRODUCTION OF MEDIUM DEEP SEA TRAWLER FOR COMMERCIAL TRAWLING AT SAKTHIKULANGARA, NEENDAKARA COAST\***

A few entrepreneurs at Sakthikulangara launched three medium deep sea trawlers in September–October, 1988, aiming offshore resources like deep-sea prawns and lobsters and other quality fishes in the sea beyond 50 metres.

On enquiry it was understood that some more vessels are being built and they are at the final stages of completion.

---

\*Prepared by T.G. Vijaya Warriar, Vizhinjam Research Centre and M. Babu Philip, Quilon Field Centre of CMFRI.

Except some trials, no systematic fishing with these vessels is started so far. So, no data regarding the catch details of these vessels is available. The trial fishing conducted so far is encouraging.

Among the newly introduced vessels, two are wooden and the third is steel built (Figs. 1 and 2). The specification of both type of vessels are given below in Table 1. As shown in the Table, when compared to the existing trawlers they are much bigger in size, horse power, capacity and endurance, and well equipped in all respects.



Fig. 1. A view of two wooden deep sea vessels moored at the Ashtamudi lake, Sakthikulangara.

**Table 1.** Specifications of the steel built and wooden deep sea trawlers newly introduced at Sakthikulangara-Neendakara coast

Particulars	Steel built	Wooden
Name of the boat	Fine	Bluemarine V.I, V.2
Place of construction	Quilon	Quilon
Dimensions of the boat:		
a) Length	14.5 m	15.25 m
b) Beam	4.75 m	5.08 m
c) Depth	2.00 m	3.01 m
d) Draught	2.55 m	2.50 m
e) Speed	10 Knots	Trawl speed 1500 to 1600 RPM
f) Endurance	15 days	15 days
Tonnage of vessel:		
a) Gross tonnage	30	3.1
b) Net tonnage	11	10.8
Materials:		
a) Type of material	Steel	Anjili wood
b) Quantity of material required	30 tonnes of steel	3000 Cft.
c) Cost of the material	Rs. 8 lakhs	Rs. 210/Cft.
Type of construction	Chine	Carvel combination
Type of protection for underwater surface of hull	Painted	Fibre glass and marine quality aluminium sheeting
Type of engine	MWM of Greaves Cotton (D 232 V8)	Ashok Leyland M 680
Horse power	190 HP	178 HP
No. of person can be accommodated	6	8
Winches	Mechanical	One mech, winch with s.s. wire rope
Capacity:		
a) Fish hold	25 m <sup>3</sup>	18 tonnes
b) Fresh water	3,000 litres	3,000 litres
c) Fuel capacity	6,500 litres	5,000 litres
Cost of the boat	Rs. 14 lakhs	—
Navigational & security aid	Compass	Compass, firefighting equipments life-buoy
Communicational aid	Nil	Fish finder, VHF
Life of the boat	20 years	15-25 years

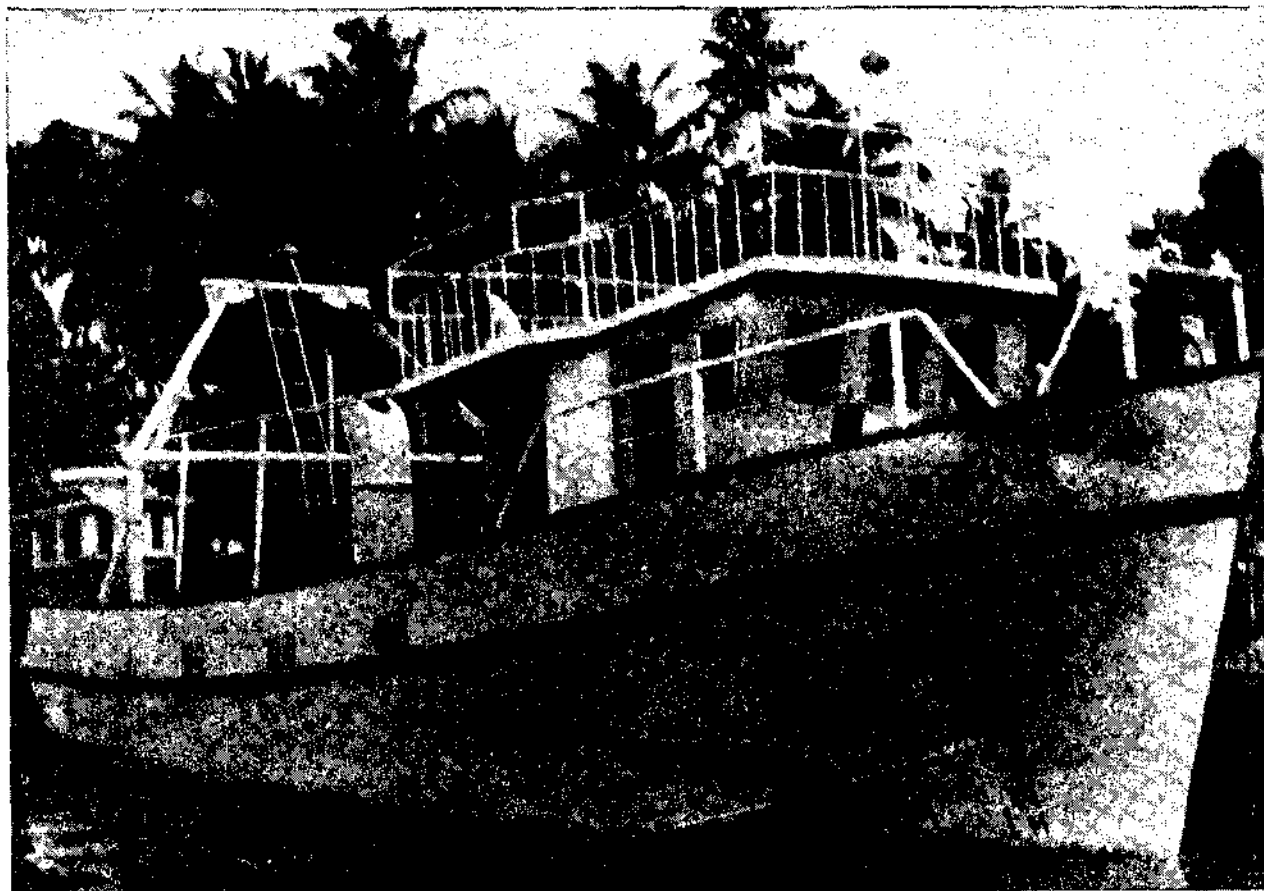


Fig. 2. A view of the steel built deep sea vessel moored at the Ashtamudi lake, Sakthikulangara.

