

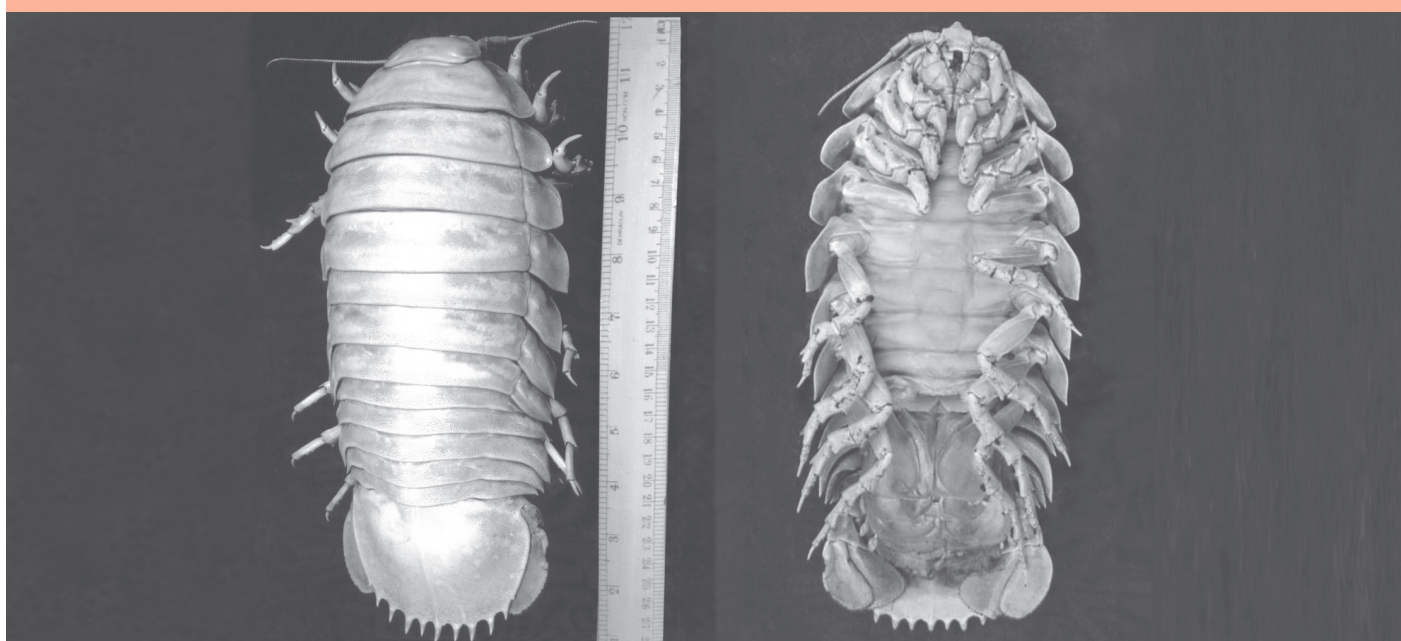
ISSN 0254-380 X



MARINE FISHERIES INFORMATION SERVICE

No. 187

January, February, March, 2006



TECHNICAL AND EXTENSION SERIES

CENTRAL MARINE FISHERIES RESEARCH INSTITUTE

COCHIN, INDIA

(INDIAN COUNCIL OF AGRICULTURAL RESEARCH)

Cephalopod landing by trawlers in Mumbai consist of *L. duvauceli*, *S.*

onwards a new entrant *Sepia prashadi* has shown its occurrence in cephalopod

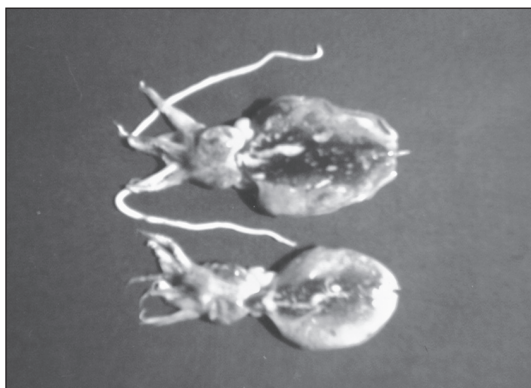


Plate 1. *Sepia aculeata* (above) and *Sepia prashadi* (below)

aculeata, *S. inermis*, *S. pharaonis* and Octopus spp. They are landed almost throughout the year at New Ferry Wharf and Sasoon Dock, Mumbai. The fishing season is from September to May with peak during September to January.

Among the landings of cuttlefish at Mumbai, *Sepia aculeata* formed the dominant species, but from year 2000



Plate 2. Cuttle bone of *Sepia aculeata* (above) and *Sepia prashadi* (below)

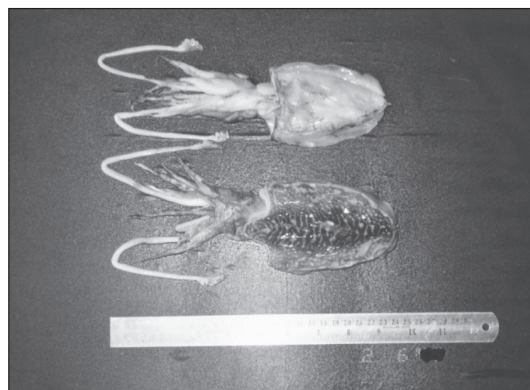


Plate 3. Adult of *Sepia prashadi* (Dorsal and ventral view)

Table. 1. Landings of *S. aculeata* in tonnes at New Ferry Wharf, Mumbai.

Year	2001	2002	2003	2004	Total	Average
Month						
Sep	2.57	1.38	6.74	1.11	11.80	2.95
Oct	8.61	43.84	22.01	53.08	127.53	31.88
Nov	53.66	43.71	96.25	138.57	332.18	83.04
Dec	144.66	34.29	126.60	61.74	367.30	91.82
Total	209.50	123.22	251.60	254.50		

Table. 2. Landings of *S. prashadi* in tonnes at New Ferry Wharf, Mumbai

Year	2001	2002	2003	2004	Total	Average
Month						
Sep	48.81	26.18	121.65	20.95	217.58	54.40
Oct	33.53	27.32	60.16	86.60	207.61	51.90
Nov	13.41	10.93	24.06	34.64	83.04	20.76
Dec	16.07	3.81	14.07	6.86	40.81	10.20
Total	111.83	68.23	219.93	149.06		

fishery. *S. prashadi* occurs from September and landings last up to December. Seasonal occurrence of this species were reported earlier from this region. This phenomenon was observed at other landing centers also but was more pronounced at New Ferry Wharf.

A comparative study was made on the landings of *S. aculeata* and *S. prashadi* at New Ferry Wharf during September to December, 2001-2004 (Table 1 and 2). Though there was no change in fishing grounds, gear or effort, a definite pattern

in the landings was evident. The landing of *S. aculeata* was unusually low in September, which gradually picked up by December and then again, it became the dominant species from January onwards.

The estimated average catch of *S. aculeata* for the years 2001-2004 ranged from 2.95 t in September to 91.82 in December and the average catch of *S. prashadi* decreased from 54.40 t in September to 10.20 t in December (Table 1 and 2).

At New Ferry, the size of *S. aculeata* landed in September and October ranged

between 60 to 130 mm, while *S. prashadi* ranged between 55 to 110 mm (Plate.1). From November the size of *S. aculeata* ranged between 70 to 180 mm and *S. prashadi* ranged between 70 to 170 mm. The two species could easily be identified, since the cuttle bone of *S. prashadi* is very distinct with its dorsal surface being pink in colour (Plate-2). However, both the species were not segregated and they were sold together at the rate of Rs.60-80/Kg

by auction at the landing center.

Adults of *S. prashadi* locally known as 'Chaka goti', develop prominent lateral stripes on its dorsal surface (Plate.3) and the size ranges from 130 to 170 mm and are sold along with the catch of *S. pharaonis*.

Prepared by: Sujit Sundaram,
Umesh.H.Rane, S.K.Kamble, A.Y.Mistry
and P.S. Salvi, Mumbai Research Centre
of CMFRI, Mumbai