



MARINE FISHERIES INFORMATION SERVICE



No. 61
JANUARY, FEBRUARY
1985

Technical and Extension Series

CENTRAL MARINE FISHERIES RESEARCH INSTITUTE
COCHIN, INDIA

INDIAN COUNCIL OF AGRICULTURAL RESEARCH

THE MARINE FISHERIES INFORMATION SERVICE: Technical and Extension Series envisages the rapid dissemination of information on marine and brackish water fishery resources and allied data available with the National Marine Living Resources Data Centre (NMLRDC) and the Research Divisions of the Institute, results of proven researches for transfer of technology to the fish farmers and industry and of other relevant information needed for Research and Development efforts in the marine fisheries sector.

Abbreviation - *Mar. Fish. Infor. Serv. T & E Ser.*, No. 61: 1985

ON THE CAPTURE OF JUVENILES OF *LUTJANUS RUSSELLI* (BLEEKER) AND *SCATOPHAGUS ARGUS* VAR. *TETRACANTHUS* (LACEPEDE) FROM BOMBAY WATERS*

Bhokshi nets are operated regularly at Manori creek at Marve for prawns and fishes of the creek. Two *Bhokshi* nets of mesh size 4-12 cm at the mouth and 1 cm at the cod end that were operated in the creek on 14-9-'83 landed 200 kg of fishes which contained 20 kg of juveniles of two species of quality fishes as incidental catches. They were identified as *Lutjanus russelli* (Bleeker) and *Scatophagus argus* var. *tetracanthus* (Lacepede) (Figs. 1 & 2).

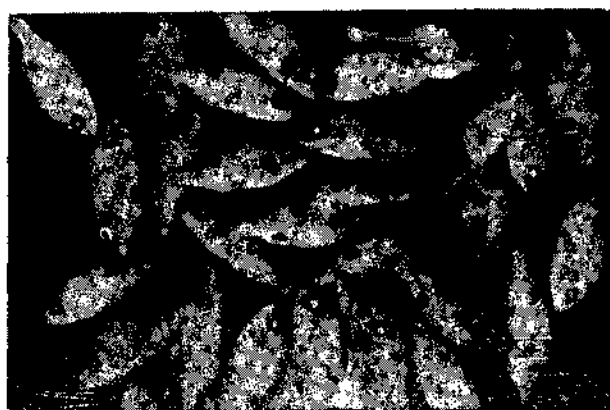


Fig. 1. Juveniles of *Lutjanus russelli* (Bleeker).

Based on this catch the number of juveniles in the fishery was estimated at 7,00,000 in the case of *L. russelli* and were observed to have a size range of 28-31 mm

weighing 13.4 g on an average. The size range in case of *S. argus* was still smaller, from 12-16 mm with an

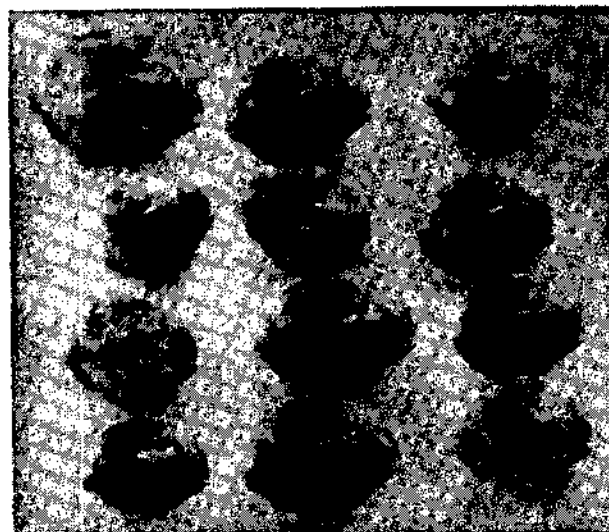


Fig. 2. Juveniles of *Scatophagus argus* var. *tetracanthus* (Lacepede)

average weight of 2 g. The juveniles of *S. argus* are quite different from adults as they do possess armature in the head region which disappear as they grow into adults. The length frequency histograms are presented in figs. 3 & 4.

It is quite probable that this unusual landings of juveniles in bag nets in good numbers was due to the

*Prepared by M. Aravindakshan and S. K. Chakraborty, Bombay Research Centre of C.M.F.R.I., Bombay.

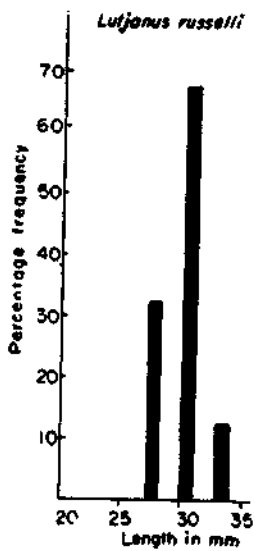


Fig. 3. Length-frequency of juveniles of *Lutjanus russelli* (Bleeker).

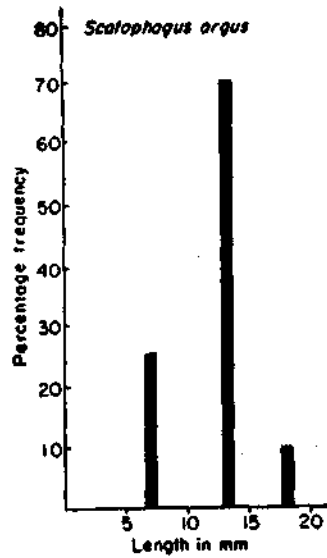


Fig. 4. Length-frequency of juveniles of *Scatophagus argus* var. *tetracanthus* (Lacepede).

young ones coming into the creek owing to the availability of food in the creeks during monsoon period and also to escape strong currents in the foreshore areas. During this period *Bhokshi* net operations are harmful for juvenile fishes and therefore it is advisable that these nets be operated with larger mesh size at the cod end. The adults of both the above cited species grow to a size of 30 cm in length and fetch a price of Rs. 2-3 in the market when sold in fresh condition. *S. argus* is however, less esteemed as food fish than *L. russelli*.

The authors are grateful to Shri A.A. Jayaprakash, Scientist S-1 for the help rendered in identifying one species as *Scatophagus argus* var. *tetracanthus* (Lacepede).

