

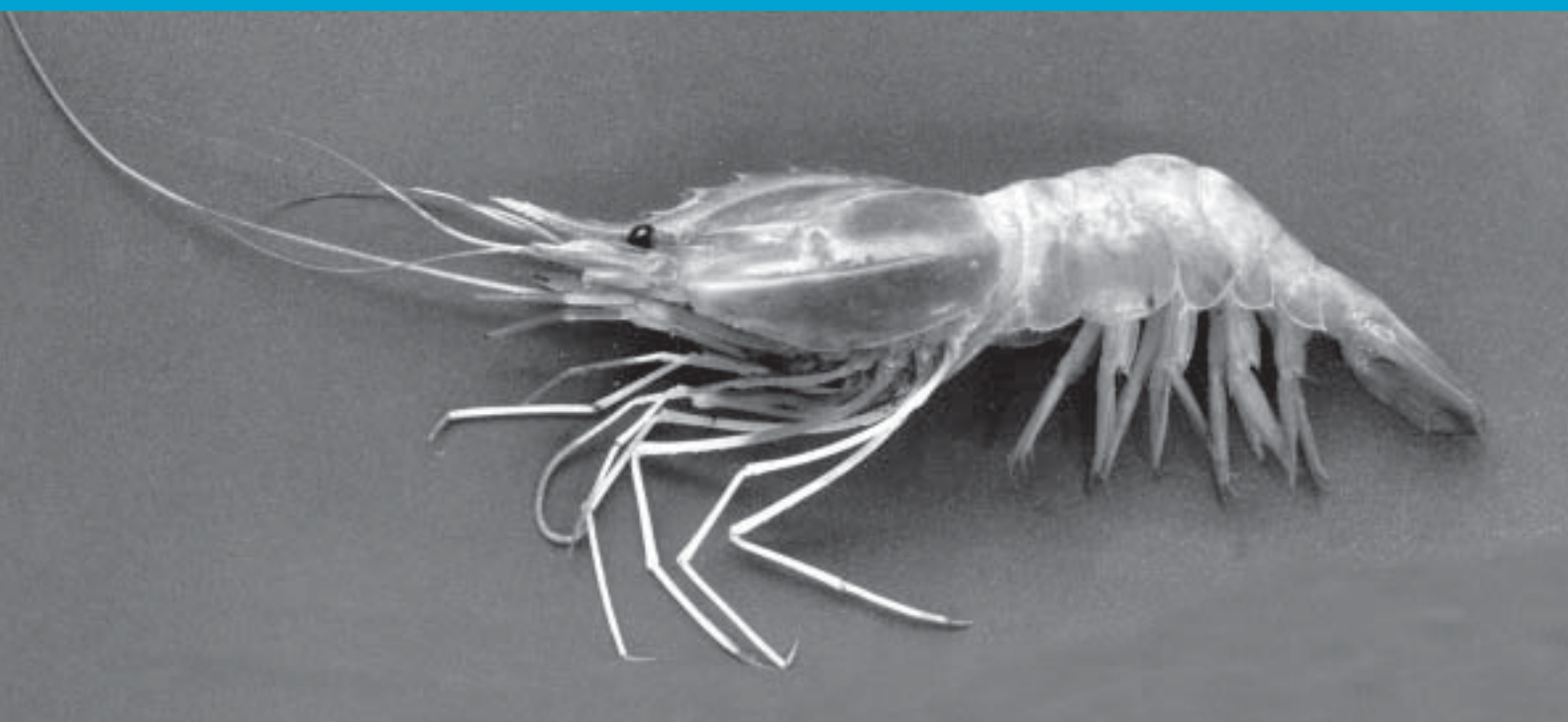
ISSN 0254-380 X



MARINE FISHERIES INFORMATION SERVICE

No. 178

October, November, December, 2003



TECHNICAL AND EXTENSION SERIES

CENTRAL MARINE FISHERIES RESEARCH INSTITUTE

COCHIN, INDIA

(INDIAN COUNCIL OF AGRICULTURAL RESEARCH)

The Indian scad, *Decapterus russelli* locally known as pillodugu forms an important seasonal fishery in the small-mechanised trawlers of Visakhapatnam, contributing about 0.6 to 8.2% of the total catch during the period from 1998 to 2002. The annual catches ranged from 20 tonnes (1999) to 361 tonnes (1998) with major landings during March to May and October to December. On 4th April 2003, multi day trawlers that had operated at a distance of 30-40 km, southeast off Visakhapatnam, landed *Decapterus* spp. in large quantities. An estimated landing of 40 tonnes of scads comprising 82% *D.russelli* and 18% *D. lajang* was observed on 7th April. High catches were also observed on 8th April after which the catch declined drastically. The depth of operation ranged from 46 to 54 m. Details of catch and group composition of the landing are presented in Table 1.

Length-frequency distribution of *D.russelli* ranged from 135-175 mm while, that of *D.laying* ranged from 165-169 mm. Sex ratio (M:F) of *D. russelli* was 1:1.5 and that of *D. lajang* 1:1 with partially spent and spent recovery stages. Moderate to active feeding was

observed in both species with the shrimp, *Acetus* sp., being the major food item.

Table 1. Major groups and estimated landings on 7.4.03 at fishing harbour, Visakhapatnam

Major groups	Estimated Catch (Kg)	%
<i>Decapterus</i> spp.	39795	68.2
<i>Rastrelliger kanagurta</i>	4003	6.9
<i>Dussumieria acuta</i>	3503	6.0
<i>Alectis indicus</i>	3247	5.6
<i>Selar crumenophthalmus</i>	2066	3.5
<i>Priacanthus</i> spp.	1058	1.8
<i>Portunus</i> spp.	475	0.8
<i>Stromateus niger</i>	315	0.5
<i>Trichiurus lepturus</i>	277	0.5
Cephalopods	235	0.5
Other groups	3406	5.8
Total	58380	

Reported by: M. Chandra Sekhar, M.S. Sumithrudu, S. Satya Rao and R.V.D. Prabhakar, Regional Centre of CMFRI, Visakhapatnam