



MARINE FISHERIES INFORMATION SERVICE

No. 180

April, May, June, 2004



TECHNICAL AND EXTENSION SERIES

CENTRAL MARINE FISHERIES RESEARCH INSTITUTE

COCHIN, INDIA

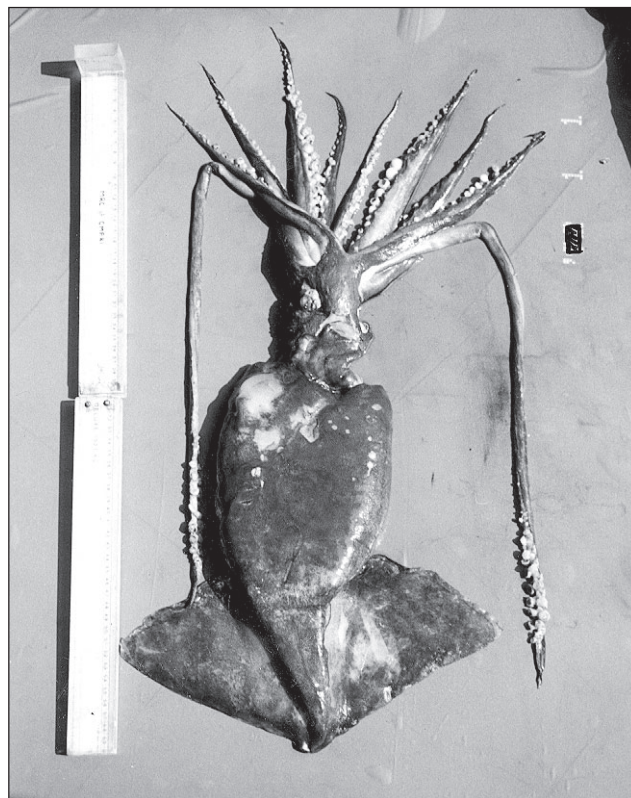
(INDIAN COUNCIL OF AGRICULTURAL RESEARCH)

On 18.11.2003 about 350 kg. of *Symplectoteuthis oualaniensis* was landed at Sassoon Dock by *Gagra jal* (Gill net) along with hooks and line.

The dorsal mantle length ranged between 300 mm and 400 mm. The single specimen brought to the laboratory measured 360 mm in length and weighed 1.450 Kg. The gut was full with thoroughly macerated and pulpy food material, which could not be identified. The specimen was a female with the gonad in maturing condition.

This squid is a prospective candidate for oceanic exploitation. The morphometric measurements (mm) of the specimen are:

Dorsal mantle length	-	360
Dorsal mantle breadth	-	160
Ventral mantle length	-	344
Largest mantle breadth with fin	-	330



Symplectoteuthis oualaniensis (Ventral view)

Length of single fin	-	160
Length of head	-	60

Mar. Fish. Infor. Serv., T&E Ser., No. 180, 2004

Breadth of head	-	90	Diameter of largest sucker	-	13
Eye diameter	-	25	Diameter of smallest sucker	-	3
Outer diameter of mouth	-	25	Siphon length	-	55
Maximum arm length	-	250	Siphon diameter	-	45
Tentacle length	-	570	<hr/>		
<i>Reported by : D.G. Jadhav, B.N. Katkar and Sujit Sundaram,</i>					
Mumbai research centre of CMFRI, Mumbai					