

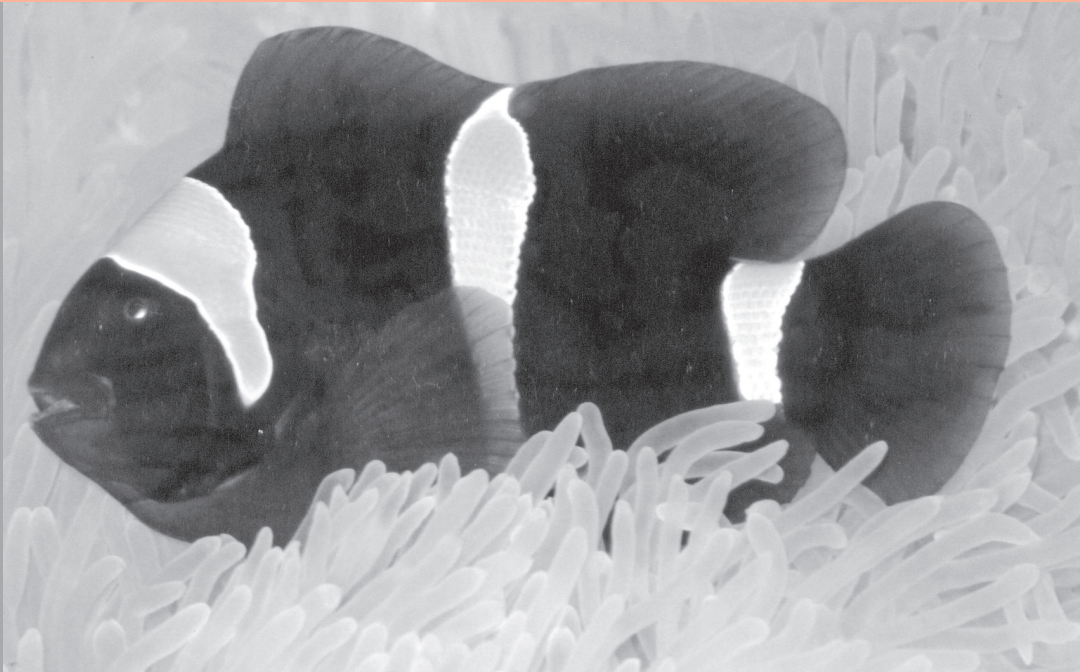
ISSN 0254-380 X



MARINE FISHERIES INFORMATION SERVICE

No. 190

October, November, December, 2006



TECHNICAL AND EXTENSION SERIES

CENTRAL MARINE FISHERIES RESEARCH INSTITUTE

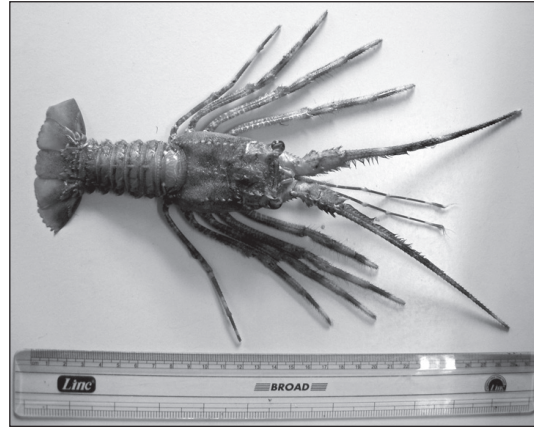
COCHIN, INDIA

(INDIAN COUNCIL OF AGRICULTURAL RESEARCH)

Unusual landing of *Palinustus waguensis* at Chennai Fishing Harbour by indigenous gear

Palinustus waguensis commonly known as 'Japanese blunthorn lobster' and locally in Tamil as 'Alkadal sivappu singera' occurs usually at a depth of 100-200m and are caught in deep sea trawls. But on 15.9.2006, three females of *P. waguensis* were obtained in the indigenous gear-'Nakku valai' a bottom set gill net with a mesh size of 45-50mm. This gear is operated at a depth of 5-10m for crabs and fishes. The carapace length of the lobsters ranged from 48-70 mm. They were reddish brown in colour and the anterior margin of

carapace had red bands. The dorsal side of the abdomen was with white spots. First



Palinustus waguensis

antennae and legs possessed white bands.

This is the first report of *P. waguensis* in indigenous gears from Indian waters.

P. waguensis is distributed along Indo-west Pacific region, Honshu island, Japan, Thailand, south west India and Andamans.

They have edible and ornamental value. In Japan, these lobsters which form sporadic catch are often sold to the public aquaria.

Reported by : S. Lakshmi Pillai and P. Thirumilu, Madras Research Centre of CMFRI, Madras