



MARINE FISHERIES INFORMATION SERVICE

No. 180

April, May, June, 2004



TECHNICAL AND EXTENSION SERIES

CENTRAL MARINE FISHERIES RESEARCH INSTITUTE

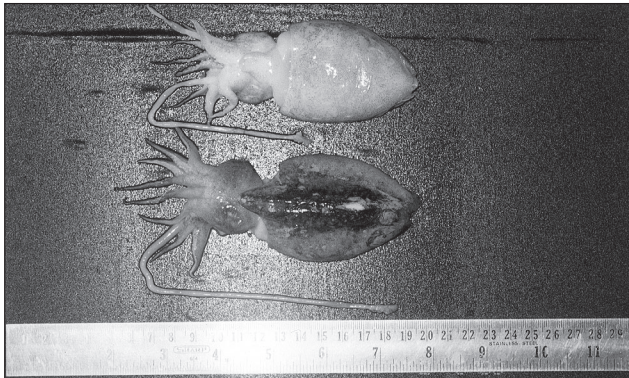
COCHIN, INDIA

(INDIAN COUNCIL OF AGRICULTURAL RESEARCH)

1068

Occurrence of *Sepia prashadi* off Mumbai

Regular and seasonal occurrence of *Sepia prashadi* was observed at landing centres of Mumbai during September and October since 2000. The body is slender, elongate and oval in outline. The fins are moderate in width. The dorsal mantle length ranged between 55 to 95 mm. The arms are subequal and tapering. The



tentacles end in short and broad clubs. The club suckers are arranged in eight oblique transverse series. The suckers are unequal in size. Three suckers of the third series are enlarged. The cuttle bone of this species is very distinct, its dorsal surface pink in colour. *Sepia prashadi* is a demersal, shallow water species found at a depth of about 40-50 m.

Separate catch statistics are not reported for this species from Mumbai waters. Twenty-seven specimens were analysed for their gut contents, which revealed that it predominantly feeds on prawns. The highly seasonal occurrence indicates a definite migration pattern.

Reported by : Sujit Sundaram and J. D. Sarang, Mumbai Research