

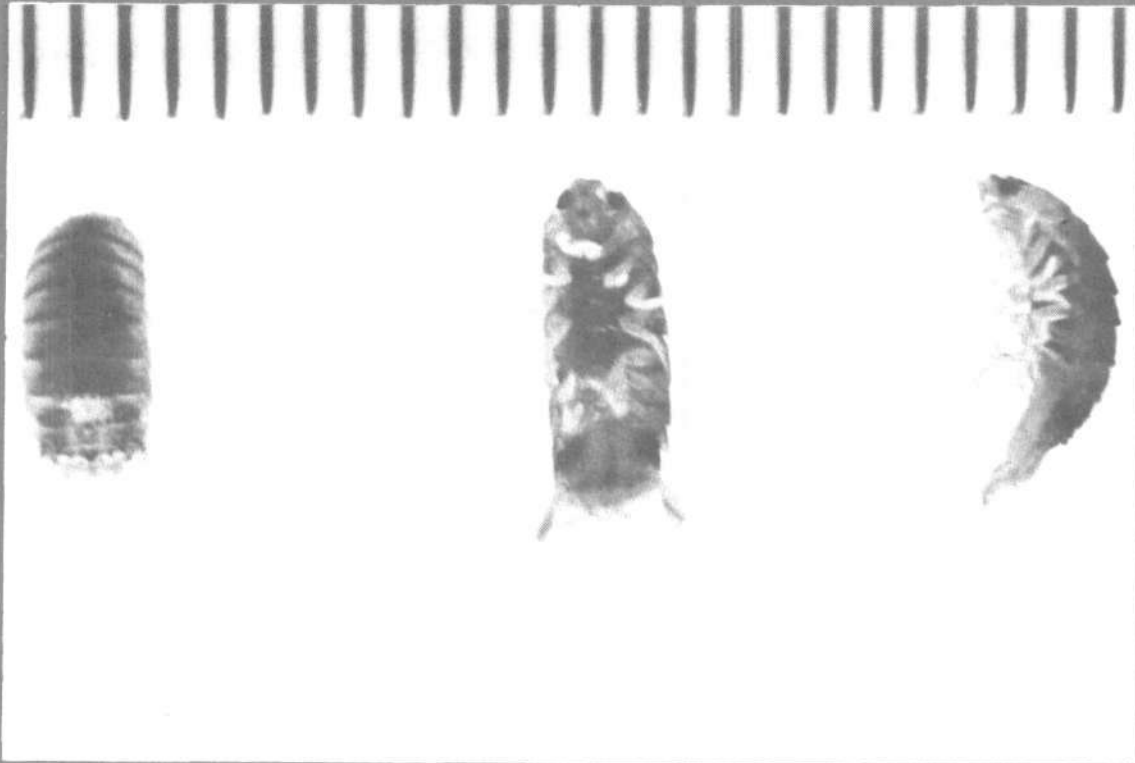


# समुद्री मात्स्यकी सूचना सेवा

## MARINE FISHERIES INFORMATION SERVICE

No. 131

AUGUST 1994



तकनीकी एवं TECHNICAL AND  
विस्तार अंकावली EXTENSION SERIES

केन्द्रीय समुद्री मात्स्यकी CENTRAL MARINE FISHERIES  
अनुसंधान संस्थान RESEARCH INSTITUTE  
कोचिन, भारत COCHIN, INDIA

भारतीय कृषि अनुसंधान परिषद  
INDIAN COUNCIL OF AGRICULTURAL RESEARCH

## ON A WHALE SHARK LANDED AT KOVALAM, KANYAKUMARI\*

On 13-3-1994 a male whale shark, *Rhincodon typus* Smith (*pulli sraavu* in Tamil) (Fig. 1) of about 1.5 t was entangled at 1500 hrs in a gill net (*thengoose valai*) operated by a crew of six from a motorised catamaran on the surface layers of the 32 m deep waters 5 km off Kovalam. The unintended catch was towed to the Kovalam beach, 2 km NW of Kanyakumari, the same evening, where it had to be buried the next day since it did not attract any merchant. Its morphometric measurements in centimetres with percentage in total length (in parenthesis) are given below:

Total length	: 534 -
Standard length	: 421 (78.8)
Length of head	: 132 (24.7)
Girth of body at pectoral fin base	: 336 (62.9)
Width of mouth from angle to angle	: 76 (14.2)
Vertical height of first dorsal fin	: 52 (9.7)
Vertical height of second dorsal fin	: 20 (3.7)
Vertical height of anal fin	: 16 (2.9)
Length of caudal fin along upper margin	: 138 (25.8)
Snout to first dorsal fin	: 236 (44.2)
Snout to second dorsal fin	: 348 (65.2)
Snout to pectoral fin	: 122 (22.8)
Snout to pelvic fin	: 270 (50.6)
Snout to anal fin	: 364 (68.2)

Interspace between first and second dorsal fins	: 112 (21.0)
Interspace between anal and caudal fins	: 57 (10.7)
Interspace between origins of pectoral and pelvic fins	: 148 (27.7)
Interspace between origins of pelvic and anal fins	: 94 (17.6)
Length of pectoral fin along outer margin	: 92 (17.2)
Length of pectoral fin from angle of inner base to tip	: 68 (12.7)
Length of pelvic fin	: 30 (5.6)
Length of first dorsal fin	: 64 (12.0)
Length of second dorsal fin	: 27 (5.0)
Length of clasper from inner base of pelvic fin	: 19 (3.5)
Length of pelvic fin along its inner side	: 16 (3.0)



Fig. 1. Frontal view of the 5.34 m long whale shark landed at Kovalam on 13-3-1994.

\*Reported by : Jacob Jerold Joel, Vizhinjam Research Centre of CMFRI, Vizhinjam, I. P. Ebenezer and A. Prosper, Kanyakumari Field Centre of CMFRI, Kanyakumari.