

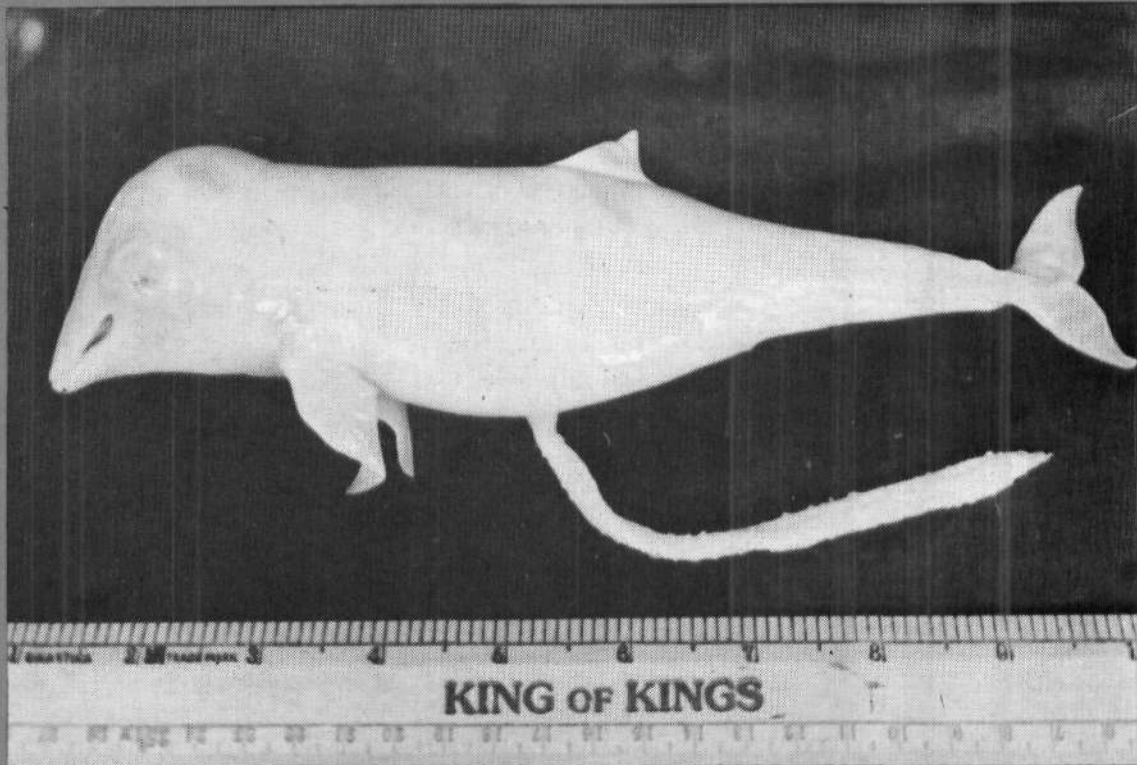


समुद्री मात्स्यकी सूचना सेवा

MARINE FISHERIES INFORMATION SERVICE

No. 138

JUNE - JULY 1995



तकनीकी एवं TECHNICAL AND
विस्तार अंकावली EXTENSION SERIES

केन्द्रीय समुद्री मात्स्यकी CENTRAL MARINE FISHERIES
अनुसंधान संस्थान RESEARCH INSTITUTE
कोचिन, भारत COCHIN, INDIA

भारतीय कृषि अनुसंधान परिषद
INDIAN COUNCIL OF AGRICULTURAL RESEARCH

**OBSERVATIONS ON A WHALE SHARK RHINODON TYPUS SMITH
CAUGHT AT ATHANKARAI ALONG THE PALK BAY COAST, TAMIL NADU***

On 26.10.92 a large specimen of whale shark *Rhinodon typus* Smith was caught in a shore-seine at Athankarai in live condition but died the next day. The net was badly damaged by the whale shark.

As there was no demand for its flesh, the fish was cut into pieces and buried near the sea shore. The morphometric measurements of the whale shark (cm) are given below:

Body characters	Measurements (cm)
Total length (tip of snout to tip of caudal fin)	1,022
Tip of snout to origin of pectoral fin	204
Tip of snout to centre ridge	35
Length of pectoral fin	210
Tip of snout to first gill opening	148
Tip of snout to last gill opening	217
Length of upper caudal fluke	225
Length of lower caudal fluke	129
Head length	240

Width of head	224
Tip of the snout to eye	65
Length of mouth opening	145
Eye diameter	4.5
Eye length	6.5
Tip of snout to spiracle	95
Length of spiracle	4.5
Width of spiracle	3.3
Height of first dorsal fin	153
Tip of snout to caudal fluke	822
Height of first gill opening	81
Height of second gill opening	94
Height of third gill opening	87
Height of fourth gill opening	80
Height of fifth gill opening	60
Weight	5 t
Sex	Male

* Reported by C. Kasinathan and N. Ramamoorthy, Regional Centre of CMFRI, Mandapam Camp - 623 520.