



MARINE FISHERIES INFORMATION SERVICE



No. 55

JANUARY, 1984

Technical and Extension Series

CENTRAL MARINE FISHERIES RESEARCH INSTITUTE

COCHIN, INDIA

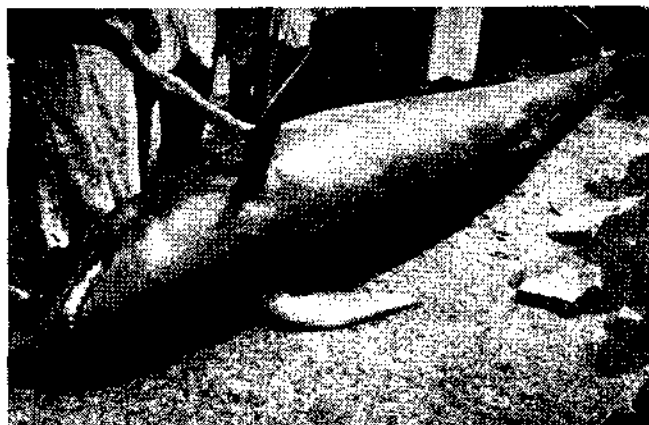
INDIAN COUNCIL OF AGRICULTURAL RESEARCH

THE MARINE FISHERIES INFORMATION SERVICE: Technical and Extension Series envisages the rapid dissemination of information on marine and brackish water fishery resources and allied data available with the National Marine Living Resources Data Centre (NMLRDC) and the Research Divisions of the Institute, results of proven researches for transfer of technology to the fish farmers and industry and of other relevant information needed for Research and Development efforts in the marine fisheries sector.

Abbreviation – *Mar. Fish. Infor. Ser. T & E Ser.*, No. 55: 1984

1. Stranding of *Pseudorca crassidens* at Calicut, Kerala

The fishermen of Puthiappa, a fishing village 5 km north of Calicut saw a whale stranded on 28-7-1975 at about 3.30 in the afternoon. It was dragged ashore and was left in a tidal pool of about $\frac{1}{2} \times 50 \times 20$ m. After struggling in the pool for about two hours it died. It was identified as false killer whale *Pseudorca crassidens* (Owen) (Fig. 1 & 2). After taking its detailed morphometric measurements, the whale was buried for taking its skeleton.



	Measurements in cm	% of total length
Total length	423	
Tip of snout to origin of flippers	74	17.47
" " dorsal	184	43.48

"	"	eye	43	10.27
"	"	blow-hole	50	11.90
"	"	genital pore	243	57.48
"	"	anus	275	64.99

Length of flippers		
anterior margin	63	14.97
posterior margin	41	9.82
width at base	20	4.84
vertical height	56	13.34

Dorsal fin		
anterior margin	52	12.32
posterior margin	21	5.07
width at base	44	10.43
vertical height	26	6.18

Caudal fin		
spread of caudal length	85	20.07

Girth of body		
at flippers	175	41.52
at anus	120	28.45

Eye diameter	3	0.80
Diameter of blow-hole	5	1.18
Cleft of mouth	38	9.09
Distance between eye to mouth	7	1.77
" " eye to blow-hole	35	8.38
" " genital slit and anus	32	7.74
Length of genital slit	30	7.22
Length of small intestine	1466	346.24
Length of large intestine	804	189.89

Dentition	$\frac{9 + 9}{10 + 10}$
-----------	-------------------------

The stomach content was analysed and found to contain semidigested matter including remains of the catfish *Tachysurus* sp. A biochemical analysis of the muscle, liver and blood was attempted and the results are as follows:

	Fat (Moisture free base in %)	Protein	Ash	Acid insoluble
Muscle	10.50	84.57	1.95	0.24
Liver	26.00	64.43	3.17	0.12
Blood	1.54	85.24	0.50	0.11

The authors are thankful to Dr. G. Seshappa for his help during the study.

Reported by R.S. Lal Mohan, K. V. Somasekharan Nair and P. Ramadoss.