

CMFRI

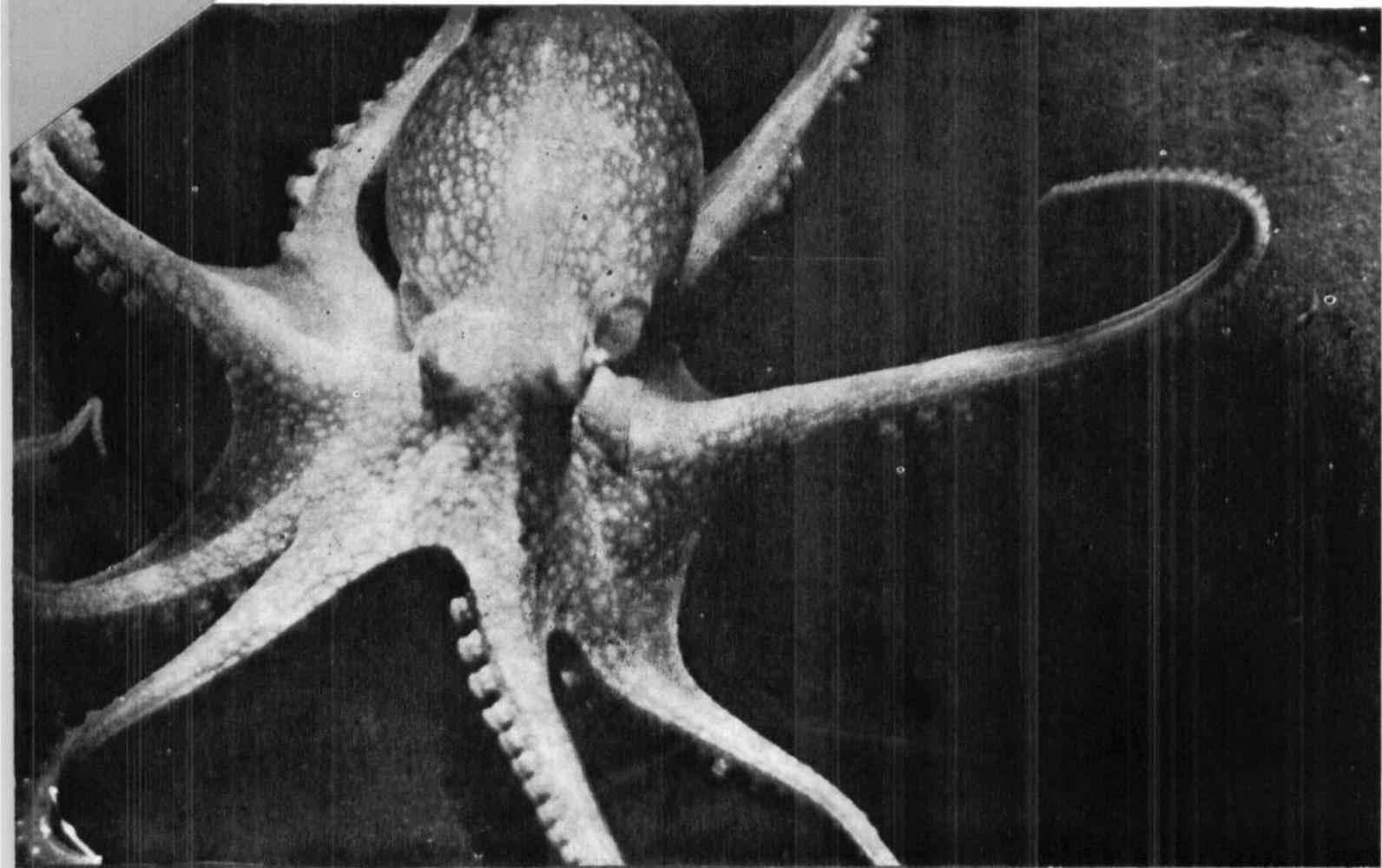
bulletin 37

JUNE 1985



CEPHALOPOD BIONOMICS, FISHERIES AND RESOURCES OF THE EXCLUSIVE ECONOMIC ZONE OF INDIA

Edited by : E. G. SILAS



CENTRAL MARINE FISHERIES RESEARCH INSTITUTE

(Indian Council of Agricultural Research)

P.B. No. 2704, Cochin 682 031, India

STOCK ASSESSMENT : SQUIDS AND CUTTLEFISHES AT SELECTED CENTRES

E. G. SILAS, M. M. MEIYAPPAN, R. SARVESAN, K. PRABHAKARAN NAIR, M. SRINATH AND
K. SATYANARAYANA RAO

ABSTRACT

Stock assessment studies have been made on the squid *Loligo duvaucelli* of Madras and Cochin areas, the cuttlefish *Sepia aculeata* of Madras area and *Sepia pharaonis* of Vizhinjam area. The exploitation rate, total mortality, instantaneous mortality, average annual stock and standing stock have been estimated and discussed. The study shows that in Vizhinjam area there is scope for increasing production in the existing fishing grounds.

INTRODUCTION

Cephalopods comprising squids and cuttlefishes are one of the important marine fishery resources in India especially since they are processed and exported to various countries. However, so far no detailed studies have been attempted on the stocks of this resource which is distributed in various parts of the Indian coasts. Stock assessment and management of cephalopod resources of Japan Sea and different areas of Atlantic, Pacific and Indian Oceans have been investigated or reviewed by Okutani (1977), Sanders (1981), Lange and Sissenwine (1983), Osako and Murata (1983), Sato and Hatanaka (1983), Chikuni (1983) and Caddy (1983). Studies on the stocks of cephalopods have been carried out at three selected centres viz., Madras, Cochin and Vizhinjam (Tiruvandrum) in the present work and the results obtained are presented here.

DATA BASE

Squids and cuttlefishes are obtained as by-catch mostly in shrimp trawl nets, shore seines and boat seines. Only along the southwest coast of India between Kanyakumari and Vizhinjam there is an organised fishery for cuttlefishes exploited with hooks and lines. In this work, the cuttlefish *Sepia pharaonis* fishery at Vizhinjam conducted with hooks and lines during 1978-'80 and trawl catches of *Loligo duvaucelli* at Madras and Cochin and the cuttlefish *Sepia aculeata*

catches at Madras during 1979-'80 have been studied. The fishery is limited to the 50 m depth line in the traditional trawling grounds as it is the case in most of the marine fisheries of the country.

The data base consists of sexwise weighted length frequency composition on observed days from which the monthly estimates are arrived at. The average length frequency data which has been used in the stock assessment was obtained by considering the average contribution of each length class during the study period.

ESTIMATION OF GROWTH PARAMETERS

It is assumed that growth in dorsal mantle length of the species considered follows von Bertalanffy's (1938) equation, its functional form being

$$L_t = L_{\infty} (1 - e^{-K(t-t_0)}) \dots \dots \dots (1)$$

where L_t = length at age t

L_{∞} = asymptotic length that is attained if the fish is assumed to grow to an infinite age.

K = a growth parameter, which determines how rapidly the fish approaches the limiting length L_{∞} .

t_0 = intercept on the age of axis corresponding to zero length.

The growth parameters L_{∞} and K were estimated by applying the straight line method proposed by Alagaraja (1984) which is similar to ELEFAN proposed

by Pauly and David (1981). The estimated parametric values for different species at different centres are given below :

		L_{∞} (mm)		K
				(annual)
Cochin	<i>Loligo duvaucelii</i>	Male	327	0.61
		Female	205	1.19
Madras	<i>Loligo duvaucelii</i>	Male	200	0.945
		Female	200	0.945
Madras	<i>Sepia aculeata</i>	Male	205	1.1318
		Female	205	1.1318
Vizhinjam	<i>Sepia pharaonis</i>	Male	365	0.7128
		Female	342	0.8634

STOCK ESTIMATION

Cohort Analysis

In studies on fish stock assessment, a basic assumption is that, within any one age group, the decline in number with age follows an exponential curve. In cohort analysis this curve is replaced with a 'step function' with two assumptions viz., (1) the entire catch of that age group is fished at exactly the middle of the age interval, and that (2) only natural declines take place continuously in an exponential form.

The adjustments that have to be made to the procedures based on age data to make them applicable to the length data (Jones, 1981) are adopted here.

In cohort analysis, by examining the numbers of the species caught at successive intervals during their lives, it is possible to understand what is happening to the stock, if the data considered represents average conditions. Further the length of the species could be used to define boundaries between successive intervals. Each length interval denotes a successive interval in the life of the typical year class, though the duration of the interval will vary.

It is assumed that the input length composition in length cohort analysis, is representative of a steady state situation and that the numbers caught represent annual catches per length group. But this is not likely to be in practice. However, a useful approximation can be obtained by determining the average length composition over a period of as many years as possible.

FORMULATION (Jones, 1981)

The basic equation

$$N_t = N_{t+\Delta t} e^{M \Delta t} + C_t e^{M \Delta t/2} \dots \dots (2)$$

Where N_t = number in sea at age t

C_t = catch during age interval

t = time required to grow from the beginning to end of a length interval

The time required to grow from the beginning (L_1) to the upper limit of a length interval (L_2) had been calculated with von Bertalanffy's growth equation rearranged as

$$\Delta t = t_2 - t_1 = (1/K) \ln [(L_{\infty} - L_1)/(L_{\infty} - L_2)] \dots \dots (3)$$

This equation is a function of L_{∞} and K but independent of t . This expression for Δt had been used in conjunction with equation (2) to arrive at the following one for analysing the length composition :

$$N_1 = (N_2 X_L + C_{1,2}) X_L \dots \dots \dots (4)$$

Where $C_{1,2}$ represent the number caught during a year with lengths between L_1 and L_2 , and

$$X_L = [(L_{\infty} - L_1)/(L_{\infty} - L_2)]^{M/2K} \dots \dots \dots (5)$$

N_1 and N_2 represent numbers in the sea with length L_1 and L_2 respectively.

This equation is a function of L_{∞} , M and K ; more particularly since the M and K appear as the ratio M/K , the equation is a function of the two variables L_{∞} and M/K .

The procedure involves first the estimation of a value for the number of the particular species reaching the length corresponding to the beginning of the largest length group. Successive application of the equation (4) leads to the estimates of numbers reaching a particular length for successively smaller animals.

If the oldest age group comprises all individuals older than a certain age, an input value of F/Z is required. The effect on the estimates among the younger ages, of adopting different values for F/Z will depend on whether the stock is heavily exploited or not. When the stock is heavily exploited, the choice of terminal F/Z value is not likely to effect the calculations critically.

Estimates of exploitation rate designated by the ratio F/Z has been determined directly for each length interval using the relationship

$$F/Z = \text{number caught/number dying.}$$

Calculation of instantaneous fishing mortality rate integrated over a particular time interval is attained from the relationship

$$F \Delta t = (F/Z) (Z \Delta t) \dots \dots \dots (6)$$

TABLE 1. Cohort analysis of the numbers landed in different length groups of males of *Loligo duvaucelii* at Madras during 1979-'80.

$$L_{\infty} = 200 \text{ (mm)} \quad K = 0.9450 \text{ (annual)} \quad M/K = 1.5$$

Length* Class (mm)	Numbers landed	Numbers in the sea	Zdt	F/Z	Fdt	Z	Average numbers in the sea
40 —	2130	716547	0.0999	0.0313	0.0031	1.4632	46571
50 —	18400	648402	0.1338	0.2265	0.0303	1.8327	44317
60 —	30711	567183	0.1701	0.3461	0.0589	2.1679	40925
70 —	63100	478461	0.2709	0.5557	0.1506	3.1903	35594
80 —	78408	364906	0.3911	0.6639	0.2596	4.2174	28004
90 —	77578	246802	0.5549	0.7381	0.4096	5.4125	19419
100 —	54542	141698	0.6969	0.7670	0.5345	6.0833	11690
110 —	29651	70586	0.7908	0.7687	0.6078	6.1271	6296
120 —	7142	32011	0.4835	0.5820	0.2814	3.3910	3619
130 —	4990	19739	0.5650	0.5857	0.3309	3.4212	2490
140 —	8665	11219	2.4320	0.8458	2.0569	9.1909	1113
150 —	690	986		0.7000			

0 Lower limit

TABLE 2. Cohort analysis of the numbers landed in different length groups of females of *Loligo duvaucelii* at Madras during 1979-80.

$$L_{\infty} = 200 \text{ (mm)} \quad K = 0.9450 \text{ (annual)} \quad M/K = 1.5$$

Length* Class(mm)	Numbers landed	Numbers in the sea	Zdt	F/Z	Fdt	Z	Average numbers in the sea
40 —	3074	642560	0.1018	0.0494	0.0050	1.4912	41724
50 —	12892	580343	0.1272	0.1860	0.0237	1.7415	39793
60 —	24111	511045	0.1623	0.3149	0.0511	2.0690	37010
70 —	24285	434472	0.1813	0.3372	0.0611	2.1386	33679
80 —	47211	362448	0.2802	0.5330	0.1494	3.0353	29182
90 —	76521	273871	0.4998	0.7130	0.3550	4.8935	22014
100 —	43864	166145	0.4945	0.6767	0.3346	4.3847	14783
110 —	44259	101326	0.8251	0.7775	0.6415	6.3701	8936
120 —	27193	44399	1.3303	0.8326	1.1076	8.4674	3857
130 —	7564	11739	1.5162	0.8256	1.2518	8.1293	1127
140 —	1804	2577	—	0.7000	—	—	—

* Lower limit.

TABLE 3. Cohort analysis of the numbers landed in different length groups of males of *Sepia aculeata* at Madras during 1979-'80.

$$L_{\infty} = 205 \text{ (mm)} \quad K = 1.1318 \text{ (annual)} \quad M/K = 1.5$$

Length * Class (mm)	Numbers landed	Numbers in the sea	Zdt	F/Z	Fdt	Z	Average number in the sea
30 —	1039	341596	0.0914	0.0348	0.0032	1.7589	16971
40 —	2194	311745	0.1012	0.0731	0.0074	1.8317	16379
50 —	7408	281744	0.1281	0.2187	0.0280	2.1730	15586
60 —	9852	247877	0.1500	0.2853	0.0428	2.3754	14538
70 —	18036	213344	0.2093	0.4477	0.0937	3.0739	13105
80 —	20888	173059	0.2626	0.5226	0.1372	3.5563	11239
90 —	18973	133091	0.3021	0.5468	0.1652	3.7460	9263
100 —	17540	98393	0.3635	0.5849	0.2126	4.0899	7332
110 —	17028	68405	0.4823	0.6505	0.3138	4.8576	5389
120 —	14293	42229	0.6526	0.7061	0.4608	5.7774	3503
130 —	8120	21988	0.7442	0.7036	0.5236	5.7270	2015
140 —	4209	10447	0.8606	0.6981	0.6008	5.6241	1072
150 —	1563	4418	0.8308	0.6270	0.5209	4.5511	548
160 —	875	1925	1.1729	0.6583	0.7721	4.9679	268
170 —	417	596	—	0.7000	—	—	—

* Lower limit.

TABLE 4. Cohort analysis of the numbers landed in different length groups of females of *Sepia aculeata* at Madras during 1979-'80.

$$L_{\infty} = 205 \text{ (mm)} \quad K = 1.1318 \text{ (annual)} \quad M/K = 1.5$$

Length * Class (mm)	Numbers landed	Numbers in the sea	Zdt	F/Z	Fdt	Z	Average numbers in the sea
30 —	650	367136	0.0901	0.0205	0.0019	1.7333	18252
40 —	1020	335499	0.0970	0.0329	0.0032	1.7554	17663
50 —	4943	304493	0.1173	0.1467	0.0172	1.9896	16932
60 —	10909	270805	0.1506	0.2881	0.0434	2.3847	15878
70 —	11843	232939	0.1708	0.3238	0.0553	2.5106	14568
80 —	26020	196364	0.2771	0.5475	0.1517	3.7515	12669
90 —	22848	148835	0.3160	0.5666	0.1790	3.9170	10295
100 —	19779	108509	0.3689	0.5909	0.2180	4.1495	8067
110 —	13818	75034	0.3902	0.5700	0.2224	3.9481	6141
120 —	12853	50792	0.5134	0.6302	0.3235	4.5907	4443
130 —	9543	30397	0.6447	0.6607	0.4260	5.0035	2887
140 —	3842	15953	0.5694	0.5548	0.3159	3.8130	1816
150 —	4189	9027	1.0762	0.7040	0.7577	5.7359	1037
160 —	2154	3077	—	0.7000	—	—	—

*Lower limit

TABLE 5. Cohort analysis of the numbers landed in different length groups of males of *Loligo duvaucelii* at Cochin during 1979-'80

$$L_{\infty} = 327 \text{ (mm)} \quad K = 0.61 \text{ (annual)} \quad M/K = 1.5$$

Length* Class (mm)	Numbers landed	Numbers in the sea	Zdt	F/Z	Fdt	Z	Average numbers in the sea
40 —	3050	1156498	0.1111	0.0251	0.0028	0.9385	129613
60 —	90818	1034851	0.2144	0.4547	0.0975	1.6779	119037
80 —	213836	835115	0.4452	0.7126	0.3173	3.1841	94237
100 —	296725	535052	1.0405	0.8575	0.8922	6.4223	53878
120 —	80506	189028	0.7679	0.7946	0.6101	4.4539	22749
140 —	35266	87707	0.7954	0.7652	0.5704	3.8376	11824
160 —	7730	41622	0.4220	0.5416	0.2274	1.9960	7151
180 —	17381	27349	1.4545	0.8292	1.2060	5.3557	3914
200 —	4435	6386	1.8163	0.8293	1.5063	5.3615	997
220 —	727	1039	—	0.7000	—	—	—

* Lower limit.

TABLE 6. Cohort analysis of the numbers landed in different length groups of females of *Loligo duvaucelii* at Cochin during 1979-'80

$$L_{\infty} = 205 \text{ (mm)} \quad K = 1.19 \text{ (annual)} \quad M/K = 1.5$$

Length* Class (mm)	Numbers landed	Numbers in the sea	Zdt	F/Z	Fdt	Z	Average numbers in the sea
50 —	1987	1655192	0.1013	0.0125	0.0013	1.8075	88219
60 —	7949	1495734	0.1128	0.0498	0.0056	1.8786	84939
70 —	37764	1336168	0.1458	0.2083	0.0304	2.2545	80426
80 —	83850	1154843	0.2055	0.3908	0.0803	2.9303	73215
90 —	75464	940305	0.2263	0.3963	0.0897	2.9567	64406
100 —	134419	749876	0.3648	0.5864	0.2139	4.3157	53116
110 —	146576	520645	0.5322	0.6822	0.3630	5.6172	38248
120 —	113274	305796	0.7101	0.7286	0.5174	6.5769	23639
130 —	59697	150327	0.7982	0.7222	0.5765	6.4252	12865
140 —	46054	67665	1.7266	0.8279	1.4294	10.3706	5364
150 —	2561	12037	0.5851	0.4803	0.2811	3.4348	1552
160 —	2650	6705	1.0256	0.6162	0.6320	4.6510	925
170 —	1683	2404	—	0.7000	—	—	—

* Lower limit.

TABLE 7. Cohort analysis of the numbers landed in different length groups of males of *Sepia pharaonis* at Vizhinjam during 1978-'80

$$L_{\infty} = 365 \text{ (mm)} \quad K = 0.7128 \text{ (annual)} \quad M/K = 1.5$$

Length* Class (mm)	Numbers landed	Numbers in the sea	Zdt	F/Z	Fdt	Z	Average numbers in the sea
100 —	305	175161	0.1196	0.0155	0.0018	1.0860	18175
120 —	405	155423	0.1305	0.0213	0.0028	1.0925	17408
140 —	911	136405	0.1468	0.0489	0.0072	1.1242	16569
160 —	5786	117779	0.2085	0.2610	0.0544	1.4469	15320
180 —	8245	95613	0.2703	0.3641	0.0984	1.6814	13468
200 —	12680	72968	0.4063	0.5204	0.2115	2.2294	10929
220 —	11254	48603	0.5221	0.5693	0.2972	2.4823	7969
240 —	5486	28834	0.5060	0.4792	0.2424	2.0529	5577
260 —	3953	17385	0.6268	0.4883	0.3060	2.0893	3875
280 —	5369	9289	1.6294	0.7190	1.1715	3.8045	1963
300 —	1288	1821	3.2385	0.7362	2.3840	4.0525	432
320 —	50	—	—	0.7000	—	—	—

* Lower limit.

TABLE 8. Cohort analysis of the numbers landed in different length groups of females of *Sepia pharaonis* at Vizhinjam during 1978-'80

$$L_{\infty} = 342 \text{ (mm)} \quad K = 0.8634 \text{ (annual)} \quad M/K = 1.5$$

Length ⁰ class (mm)	Numbers landed	Numbers in the sea	Zdt.	F/Z	Fdt.	Z	Average numbers in the sea
100 —	11	263659	0.1294	0.0003	0.0004	1.2955	24708
120 —	107	231648	0.1421	0.0035	0.0006	1.2996	23612
140 —	2328	200961	0.1690	0.0745	0.0126	1.3944	22330
160 —	6938	169714	0.2203	0.2068	0.0455	1.6328	20548
180 —	17379	136164	0.3495	0.4327	0.1512	2.2829	17593
200 —	22252	96000	0.5285	0.5647	0.2984	2.9750	13246
220 —	14228	56593	0.6076	0.5521	0.3355	2.8917	8912
240 —	10511	30823	0.8410	0.5996	0.5043	3.2347	5419
260 —	3982	13294	0.8805	0.5117	0.4505	2.6520	2934
280 —	3572	5511	2.6089	0.6996	1.8252	4.3114	1184
300 —	284	406	—	0.7000	—	—	—

* Lower limit.

Actual time intervals Δt for each length interval have to be taken into account in estimating the annual mortality rates Z and F . This requires additional input information. Besides knowing M/K , it is also necessary to know either one of them. Assuming that the value of M is known, then the total instantaneous mortality rate is

$$Z = M / (1 - F/Z) \dots\dots\dots(7)$$

The basic input data in the present study are (1) M/K taken as 1.5 on the assumption that 99% of the individuals die when they attain 95% of L_∞ and (2) terminal F/Z taken as 0.7 besides the L_∞ and K and average annual length composition of the study period.

RESULTS AND DISCUSSION

The sexwise exploitation rate, total numbers and average numbers in the sea, total mortality and instantaneous mortality rate for *Loligo duvaucelii* and *Sepia aculeata* along Madras coast, *Loligo duvaucelii* along Cochin coast and *Sepia pharaonis* at Vizhinjam are given in Table 1-8, and the stock estimates (in tonnes) in the three areas in Table 9.

TABLE 9. Stock Estimates at Selected Centres (in tonnes)

<i>Loligo duvaucelii</i> (Cochin)				
		Average landings	Average annual stock	Standing stock
Male	..	32	70	11
Female	..	35	180	14
Total	..	67	250	25
<i>Loligo duvaucelii</i> (Madras)				
Male	..	15	51	5
Female	..	18	53	5
Total	..	33	104	10
<i>Sepia aculeata</i> (Madras)]				
Male	..	15	75	6
Female	..	17	93	8
Total	..	32	168	14
<i>Sepia pharaonis</i> (Vizhinjam)				
Male	..	45	295	51
Female	..	61	341	53
Total	..	106	636	104

The results show that the average annual stock of *L. duvaucelii* of Cochin area is 250 t which is nearly 2½ times that of Madras area. Correspondingly the standing stock in Cochin area (25 t) is also higher than in Madras area (10 t). In both areas the average annual stock as well as the average landings of females are greater than males. The standing stock of the two sexes are of equal abundance in Madras area while in Cochin area the standing stock of males is lesser than that of females.

In the case of *Sepia aculeata* of Madras coast the average annual stock amounts to 168 t of which females account for 55%. The standing stock of this species (14 t) is slightly more than that of *Loligo duvaucelii* of Madras coast (10 t) and females are dominant in the stock.

The average annual stock of *Sepia pharaonis* in Vizhinjam area where it supports a good fishery, is high, 636 t and females form 54% of the population. The standing stock of the species is 104 t comprising of males and females more or less in the same proportion.

The exploitation of the three species studied is greater in the case of females than males in all the three centres.

The effect of change in fishing mortality from the present rate on the yield was analysed for all the three species (Fig. 1). It could be observed that in the case of *Sepia pharaonis* of both sexes the yield will increase with increase in further fishing mortality. In the case of females of *Sepia aculeata* of Madras area and females of *Loligo duvaucelii* of Cochin area by increasing the effort by another 20% only a marginal increase in the yield can be realised.

Since squids and cuttlefishes form only a small percentage of the total trawl catches any further increase or decrease in fishing effort has to be considered keeping in view the multispecies nature of the gear which is directed mainly at shrimps.

Based on the stocks estimated at Madras, Cochin and Vizhinjam, assuming that the density of stocks and rate of exploitation of the three species studied are uniform all along the coasts, the all India average annual stock and standing stocks of the three species which accounted for major portion of the country's landings, have been worked out from the average all India landings of cephalopods for the period 1978-'80 and the estimates are as follows :

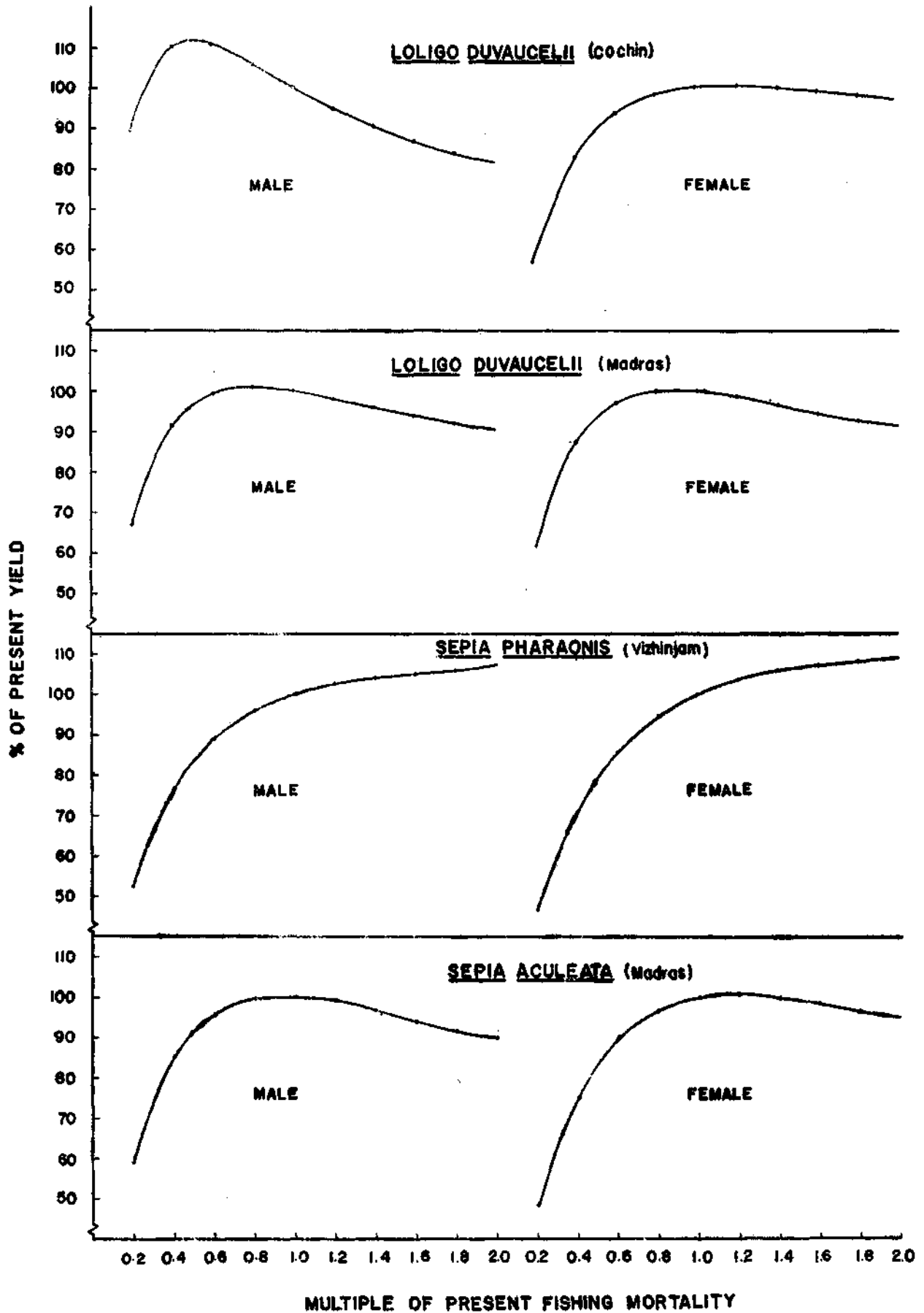


FIG. 1. The effect of change in fishing mortality on yield of males and females of *Sepia aculeata* (Madras), *Sepia pharaonis* (Vizhinjam) and *Loligo duvaucelii* (Madras and Cochin).

	Average landings	Average annual stock	Standing stock
<i>Loligo duvaucelii</i>	5142 t	18203 t	1800 t
<i>Sepia aculeata</i>	4483 t	23536 t	1961 t
<i>Sepia pharaonis</i>	2397 t	15245 t	2352 t
Total	12022 t	56984 t	5513 t

The reasons for the lesser estimated annual stocks of males than females in the case of all the three species studied are not clear. It may be due to factors like differential bathymetric distribution of the sexes or migration of males. This aspect has to be studied.

There are good possibilities for increasing production of the cuttlefish *Sepia pharaonis* in Vizhinjam area by stepping up the effort. At present indigenous hooks are only used in fishing cuttlefish in the area.

Employing modern methods of fishing as with special types of jigs may improve yield from the fishery.

The stock estimates for the three centres studied represent the figures for the existing fishing grounds within the 50 m depth zone which are being traditionally exploited at present. For increasing the production substantially, fishing range has to be extended to neighbouring grounds within the 50 m depth zone and also beyond the 50 m contour in the continental shelf and upper continental slope.

This is the first study on stock assessment of squids and cuttlefishes in selected grounds in the Indian seas. The study brings out the urgent need for assessing the standing stock of squids and cuttlefishes specieswise in all other major fishing grounds and taking up exploratory surveys for neritic and oceanic squids.

REFERENCES

- ABDULLA, I. M. AND A. Z. IDRUS 1978. The fish processing industry in peninsular Malaysia. *Proc. Symp. Fish Utilization Technology and Marketing in the IPFC Region, 18th Session, Manila, Philippines* : 45-60.
- ADAM, W 1934. Cephalopoda. *Result Sci. Voy. Ind. Orient. Meerl. Mem. Mus. r. Hist. Nat. Belgique*, 2 (16) : 1-28.
- ADAM, W 1937. Notes sur les cephalopodes : VII—sur un cas de regeneration chez *Sepioteuthis lessoniana* Lesson, 1830. *Bull. Mus. r. Hist. nat. Belg.* 13 (45) : 1-4.
- ADAM, W. 1938. Sur quelques cephalopodes octopodes des iles Andamans. *Bull. Mus. r. Hist. nat. Belgique*, 14 (7) : 1-25.
- ADAM, W. 1939a. Notes sur les cephalopodes. 13. Sur une nouvelle espece de *Sepia*, *Sepia winckworthi* sp. nov. *Bull. Mus. r. Hist. nat. Belgique*, 15 (32) : 1-11.
- ADAM, W. 1939b. The Cephalopoda in the Indian Museum, Calcutta. *Rec. Indian Mus.*, 41 : 61-110.
- ADAM, W. 1939c. Cephalopoda. Pt. I. Le genre *Seploteuthis* Blainville, 1824. *Siboga Exped. Monographie*, 55a : 1-33.
- ADAM, W. 1939d. Les cephalopodes de l'expedition du Siboga Pt. II. Revision des especes Indo-Malaises du genre *Sepia* Liane, 1758. Pt. III. Revision du genre *Septiella* (Gray) Steenstrup, 1880. *Siboga Exped. Monographie*, 55b : 35-122.
- ADAM, W. 1954. Cephalopoda. Pt. III & IV. Cephalopodes a l'exclusion des genres *Sepia*, *Septiella* et *Seploteuthis*. *Siboga Exped. Monographie*, 55c : 123-193.
- ADAM, W. 1959. Les Cephalopodes de la mer Rouge. Mission Robert Ph. DOLLFUS en Egypte (1927-1929), *Res. Sci.* 3 partie, 28 : 125-193.
- ADAM, W. 1960. Cephalopoda from the Gulf of Aquaba. *Contr. Knowl. Red Sea*. 16. *Bull. Sea-Fish. Res. Stn. Israel*, 26 : 3-26.
- ADAM, W. 1965. Redescription de Deux Especes de *Sepia* Insuffisamment Decrites par J. Steenstrup, 1875. *Vidensk. Medd. fra Dansk naturh. Foren.*, 128 : 169-176.
- ADAM, W. 1973. Contributions to the knowledge of the Red Sea. No. 47. Cephalopoda from the Red Sea. *Bull. Sea-Fish. Res. Stn. Haifa*, : 9-47.
- ADAM, W. 1975. Notes sur les cephalopodes. 26. Une nouvelle espece de *Todarodes todarodes filippensis* sp. nov. de l'Ocean Indian. *Biologie, Bull. Inst. r. Sci. nat. Belg.*, 50 (9) : 1-10.
- ADAM, W. 1979. The Sepiidae (Cephalopoda, Decapoda) in the collection of the Western Australian Museum. *Rec. W. Aust Mus.*, 7 (2) : 109-212.
- ADAM, W., AND W. J. REES. 1966. A review of the cephalopod family Sepiidae. *John Murray Exped. Sci. Rept.*, 11 (1) : 1-165.
- ALAGARAJA, K. 1984. Simple methods for estimation of parameters for assessing exploited fish stocks. *Indian J. Fish.*, 31 : 177-208.
- ALAGARSWAMI, K. 1966. On the embryonic development of the squid (? *Seploteuthis arctipinnis* Gould) from the Gulf of Mannar. *J. Mar. Biol. Ass. India*. 8 (2) : 278-284.
- ALDRICH, F. A., AND M. M. ALDRICH 1968. On the regeneration of the tentacular arm on the giant squid *Architeuthis dux* Steenstrup (Decapoda, Architeuthidae). *Can. J. Zool.*, 46 (3) : 845-847.
- ALLAN, J. K., 1945. Planktonic cephalopod larvae from the Eastern Australian coast. *Rec. Aust. Mus.*, 21 (6) : 317-350.
- ANON 1977. Development potential of selected fishery products in the regional member countries of the Asian Development Bank. 7 : *The international market for cephalopods*. SCS/DEV/76/16 : 95 p.
- ANON 1981. Three questions on octopus. *Fishery Jour.* 13 (Yamaha Motor Co., Japan) : 1-8.
- ANON, 1982. Review of Methods used for studying and Assessing squid resources. *IPFC : RRD/82/5 Date March 1982, Sydney, Australia*, 7 p.
- ANON, 1983. South China Sea Fisheries Development and Coordinating Programme. Joint ADB/FAO (SCSP-INFOFISH Market Studies. Vol. V. The International Market for Cephalopoda. SCS/DEV/83/24, 53 p.
- ARAVINDAKSHAN, P. N., AND M. SAKTYVEL 1973. The location of cephalopod nurseries in the Indian Ocean. *Handbook to the International Zooplankton Collections*, 5 : 70-75.
- ASEMOLE, N. P., AND M. J. ASEMOLE 1977. Comparative feeding ecology of sea birds of a tropical oceanic island. *Yale Univ. Peabody Mus. Nat. Hist.*, 24 : 1-131.
- BAL, D. V., AND K. VIRABHADRA RAO 1984. *Marine Fisheries* Tata McGraw Hill Publishing Company Ltd., New Delhi, 470 p.
- BALINSKY, B. I. 1981. *Introduction to Embryology*. Philadelphia, Pa. : Saunders College, 688 p.
- BAPAT, S. V., N. RADHAKRISHNAN AND K. N. RABACHANDRA KARTHA. 1972. A survey of the trawl fish resources off Karwar, India. Symposium on Demersal Fisheries, *Proc. Indo-Pacific Fish. Coun.*, 13 (3) : 354-383.
- BAPAT, S. V. *et al.* 1982. Fishery resources of the Exclusive Economic Zone of the northwest coast of India. *Bull. Cent. Mar. Fish. Res. Inst.*, 33 : 86 p.
- BARNARD, K. H. 1947. Rare squid at the cape (*Thysanoteuthis rhombus* Trochal). *J. Conch. Lond.*, 22 : 286.

- BELYAEV, G. M. 1962. Beaks of cephalopod molluscs in oceanic bottom deposits. *Okeanologiya*, 2 (2) : 311-326.
- BELYAEVA, G. F. 1979. Squids of the Indian Ocean as intermediate hosts of helminths. In: Bauer, O. N. (Ed.), Abstracts of proceedings: 7th All-Union Conference on Fish-parasites and Diseases. Nauka, Moscow, 1979 : 1-131.
- BEN-YAMI, M. 1976. *Fishing with light*. FAO Fishing Manual Fishing News Books Ltd., England, 121 p.
- BERRY, S. S. 1912. The Cephalopoda of the Hawaiian Islands. *Bull. U. S. Bur. Fish.*, 32 : 257-362.
- BERTALANFFY, L. VON. 1938. A quantitative theory of organic growth. *Hum. Biol.*, 10 (2) : 181-213.
- BIDDER, A. M. 1950. The digestive mechanism of the European squids, *Loligo vulgaris*, *L. forbesii*, *Alloteuthis media* and *A. subulata*. *Quart. Jour. Micr. Sci.*, 91 (1) : 1-32.
- BOLZKY, S. V. 1977. Post-hatching behaviour and mode of life in cephalopods. *Symp. Zool. Soc. London*, 381, 557-567.
- BOYCOTT, B. B. 1957. The cuttlefish *Sepia*. *New Biol.*, (25) : 98-118.
- BRAZIER, J. 1892. *List of the Cephalopoda in the collection of the Australian Museum*. Sydney, 3 p.
- BROCK, J. 1886. Indische Cephalopoden. *Zool. Jb.*, 2 : 591-624.
- BRUGGEN, A. C. VAN. 1962. *Thysanoteuthis rhombus* in Algoa Bay. *Ann. of the Natal Museum*, 15 : 267-272.
- BURGESS, L. A. 1967. *Lollotus rhomboidalis*, a new species of loliginid squid from the Indian Ocean. *Bull. Mar. Sci.*, 17 (2) : 319-329.
- CADDY, J. F. (ed.). 1983a. Advances in assessment of world cephalopod resources. *FAO Fish. Tech. Pap.*, (231) : 452 p.
- CADDY, J. F. 1983b. The Cephalopods: Factors relevant to their population dynamics and to the assessment and management of stocks. In: Caddy, J. F. (ed.), Advances in assessment of world cephalopod resources. *FAO Fish. Tech. Pap.*, (231) : 416-452.
- CAILLIET, G. M. AND D. L. VAUGHAN, 1983. A review of the methods and problems for quantitative assessment of *Loligo opalescens*. *Biol. Oceanogr.*, 2 : 379-400.
- CALLAN, H. G. 1940. The absence of a sex hormone controlling regeneration of the hectocotylus in *Octopus vulgaris* L. *Pubbl. Staz. Zool. Napoli*, 18 : 15-19.
- CHANDRA MOHAN, P. AND D. RATNA RAO. 1978. On the occurrence of *Sepietta oweniana* (Cephalopoda) from Visakhapatnam. *Current Sci.*, 47 (22) : 879-880.
- CHELLAPPA, D. E. 1959. A note on the night fishing observation from a *kelong*. *J. Mar. Biol. Ass. India*, 1 (1) : 93-94.
- CHIKUNI, S. 1983. Cephalopod resources in the Indo-Pacific Region. In: Caddy, J. F. (ed.), Advances in assessment of world cephalopod resources. *FAO Fish. Tech. Pap.*, (231) : 264-305.
- CHUN, C. 1910. Die Cephalopoden. I. Teil: Deposida. *Wissenschaftliche Ergebnisse deutschen Tiefsee-Expedition 'Valdivia' 1898-1899*, 18 : 1-402.
- CHUN, C. 1915. Cephalopoda. II. Teil: Myopsida, Octopoda. *Wissenschaftliche Ergebnisse deutschen Tiefsee-Expedition 'Valdivia' 1898-1899*, 18 : 405-552.
- CLARKE, M. R. 1962 a. The identification of cephalopod 'Beak' and the relationship between beak size and total body weight. *Bull. Brit. Mus., (N.H.) Zoology* 8(10) : pl. 13-22, 421-480.
- CLARKE, M. R. 1962 b. Significance of cephalopod beaks. *Nature*, 193 (4815) : 560-64.
- CLARKE, M. R. 1966. A review of the systematics and ecology of oceanic squids. *Adv. Mar. Biol.*, 4 : 91-300.
- CLARKE, M. R. 1980. Cephalopoda in the diet of sperm whales of the southern hemisphere and their bearing on sperm whale biology. *Discovery Rept.* 37 : 1-324.
- CLARKE, M. R. AND C. C. LU. 1974. Vertical Distribution of Cephalopods at 30°N 23°W in the North Atlantic. *J. Mar. Biol. Ass. U.K.* (1974) 54 : 969-984.
- CLARKE, M. R. AND C. C. LU. 1975. Vertical Distribution of Cephalopods at 18° N and 25°W in the North Atlantic, *Ibid.*, (1975) 55 : 165-182.
- CLARKE, M. R. AND N. MAC LEOD. 1974. Cephalopod remains from a sperm whale caught off Vigo Spain. *J. Mar. Biol. Assoc. U.K.*, 54 : 959-968.
- CLARKE, M. R. AND N. MAC LEOD. 1976. Cephalopod remains of whales caught off Iceland. *J. Mar. Biol. Assoc. U.K.*, 56 : 733-749.
- CLARKE, M. R. 1977. Beaks, nets and numbers. *Symp. Zool. Soc. Lond.*, 38 : 89-126.
- CMFRI, 1957. Annual Report of the Chief Research Officer for the year ending 31st March 1956. *Indian J. Fish.*, 4 (2) : 387-418.
- CMFRI, 1980. Industrial fisheries off Visakhapatnam coast based on exploratory surveys during 1972-1978. *Mar. Fish. Infor. Serv. T & E Ser.*, No. 15 : 1-15.
- CMFRI, 1981. By-catch of the shrimp fishing in India. *Mar. Fish. Infor. Serv. T & E. Ser. No. 28* : 1-13.
- CMFRI, 1982. Trends in marine fish production in India—1981. *Mar. Fish. Infor. Serv. T & E. Ser. No. 41* : 1-32.
- COLLINS, S. AND M. DUNNING. 1981. Tasman squid studies demonstrate gill netting effective. *Aust. Fish.*, 40 (8) : 4-6.
- COTTON, B. C., AND F. K. GODFREY. 1940. The Mollusca of south Australia. Pt. 2. Scaphopoda, Cephalopoda, Aplousophora and Crepidopoda. Adelaide, 317-600.
- COURT, W. G. 1980. Japan's squid fishing industry. *Mar. Fish. Rev.*, 42 (7-8) : 1-9.
- COUSTEAU, J. Y., AND P. DIOLÉ. 1973. *Octopus and Squid—The Soft Intelligence*. A & W Visual Library, New York, 304 p.
- CSIR. 1962. *The Wealth of India. Raw Materials Vol. 4 Supplement. Fish and Fisheries. Com. Sci. Ind. Res.*, New Delhi, 132 p.
- DAYARATNE, N. M. P. J. 1978. A preliminary study on the cuttle fish catches from the Wadda Bank trawler fishery. *Bull. Fish. Res. Sri Lanka*, 28 : 21-55.

- DEES, LOLA T. 1961. Cephalopods: cuttlefish, octopus, squids. *Fish. Leaf.* (524): 1-10.
- DEFRETIN, R. AND A. RICHARD. 1967. Ultrastructure de la glande optique de *Sepia officinalis* L. (Mollusque, Cephalopode) Mise en évidence de la sécrétion et de son contrôle photopériodique. *C. R. Hebd. Seances Acad. Sci., Ser. D* 265: 1416-1418.
- DELL, R. K. 1952. The recent Cephalopoda of New Zealand. *Bull. Dom. Mus. Wellington*, (16): 1-157.
- DESHMUKH, V. M. 1973. Fishery and biology of *Pomadasys hasta* (Bloch). *Indian J. Fish.*, 20 (2): 497-522.
- DEVADOSS, P. AND P. K. MAHADEVAN PILLAI. 1973. Observations on the food of juveniles of *Psettodes erumei* (Bloch). *Indian J. Fish.*, 20 (2): 664-667.
- DEVADOSS, P. AND P. K. MAHADEVAN PILLAI. 1979. Observations on the food and feeding habits of the eel *Muraenesox cinereus* (Forsk.) from Porto Novo. *Indian J. Fish.*, 26 (1 & 2): 244-247.
- DONG, Z. 1981. The Present status of the prospects of cephalopod resources in the West Pacific. *J. Fish. China*, 5 (3): 263-70 (Not consulted in original)
- DRACOVICH, A. AND J. A. KELLY JR. 1963. A biological study and some economic aspects of squid in Tampa Bay, Florida. *Proc. Gulf and Carib. Fish. Inst.*, 15th Annual Session (1962) 87-102.
- DRAGOVICH, A. AND T. POTTHOFF. 1972. Comparative study of food of skipjack and yellowfin tunas off the coast of West Africa. *Fish. Bull. U.S.*, 70: 1087-1110.
- DRUZHININ, A. D. 1972. Observations on the trawl fishery of Southern Burma. Symposium on Demersal Resources, *Proc. Indo-Pacific Fish. Coun.*, 13 (3): 151-209.
- DRUZHININ, A. D. 1973. On the fishery resources of the Gulf of Aden and some adjacent areas. FAO, Rome, DP 9/12 PDY 64/501/7.
- DULHUNTY, A. F., AND GAGE, P. W. 1971. Selective effect of an Octopus Toxin on action potentials. *J. Physiol. (London)*, 218: 433-445.
- DURCHON, M. AND A. RICHARD. 1967. Etude, en culture organotypique, du rôle endocriné de la glande optique dans la maturation ovarienne chez *Sepia officinalis* L. (Mollusque, Cephalopode). *C. R. Hebd. Seances Acad. Sci., Ser. D* 264: 1497-1500.
- EFP. 1979a. Fishing news and notes. Survey of EEZ. *Explo. Fish. Project Newsletter*. 2 (2): 21-23.
- EFP. 1979b. Results of operation of M. V. *Matsyantreeksanti* along northwestern part of Indian EEZ during May to October, 1979. Survey of EEZ Series. No. 2. *Exp. Fish. Project*, Bombay: 1-15.
- EFP. 1979c. Results of the exploratory fishing conducted during 1978-79. *Bull. Explo. Fish. Project*. 9: 66 pp.
- EFP. 1982. Results of exploratory survey of fishery resources of Wadge Bank. *Progress Report 1. Explo. Fish. Project*, Bombay: 26 p.
- FAO. 1983. Year book of Fishery Statistics 1981: Catches and Landings. *FAO Yearb. Fish. Stat.* (52).
- FAO/UN. 1961. Report to the Government of India on a survey of the Fishery Resources of the Bay of Bengal. Project FAO/EJPA 158-53, based on the work of V. M. Naumov, FAO/TA Marine Fisheries Biologist.
- FERAL, JEAN-PIERRE. 1978. La régénération des de la seiche *Sepia officinalis* (Cephalopoda, Sepioidea) (1). I-Etude Morphologique. *Cahiers de Biologie Marine*, XIX: 355-361.
- FIELDS, W. G. 1965. The structure, development, food relations, reproduction and life history of the squid, *Loligo opalescens* Berry. *Calif. Dept. Fish and Game, Fish Bull.* (131): 1-108.
- FILIPPOVA, J. A. 1968. New data on the Cephalopoda of the Indian Ocean. *Proc. Symp. Mollusca*, Mar. Biol. Ass. India, Pt. 1: 257-264.
- FISCUS, C. H. 1982. Predation of marine mammals on squids on the eastern North Pacific Ocean and the Bering Sea. *Mar. Fish. Rev.*, 44(2): 1-10.
- FISHERY AGENCY OF JAPAN. 1976. Report on cruise of the R. V. SHOYO MARU in the North Arabian Sea Survey, in cooperation with the IOP, FAO, to assess the pelagic fish stocks, 2 October 1975—14 January 1976. *Res. Dev. Div., Fish. Agen. Japan*, 110 pp.
- FISHERY AGENCY OF JAPAN. 1977. Report on cruise of the R. V. SHOYO MARU in the North Arabian Sea, in cooperation with IOP, FAO, to assess the pelagic fish stocks, 2 October 1976—13 January 1977. *Res. Dev. Div., Fish. Agen. Japan*. 165 p.
- FLECKER, H. AND COTTON, B. G. 1955. Fatal bites from Octopus. *Med. J. Aust.*, 2: 329-331.
- FREEMAN, S. E. AND TURNER, R. J. 1970. Muculotoxin, a potent toxin secreted by *Octopus maculosus* Hoyle. *Toxicol. Appl. Pharmacol.*, 16: 681-690.
- GAGE, P. W. AND A. F. DULHUNTY. 1979. Effects of toxin from the Blue-ringed Octopus *Haplochlæna maculosa*. In: Marine Toxins and other bioactive marine Metabolites Ed. Y. Hashimoto, *Jap. Sci. Soc. Press*. Ch. 3: 85-106.
- GEORGE, A. I., M. S. NAZIR AHMED AND T. N. SIVADASAN ASARI. 1976. Observations on the carangid fishery of Vizhinjam coast, Trivandrum, with special reference to *Decapterus dayi*. (Wakiya). *Bull. Dept. Fish. Kerala*, 1 (1): 9-15.
- GEORGE, P. C., B. T. ANTONY RAJA AND K. C. GEORGE. 1977. Fishery Resources of Indian Economic Zone. *Silver Jubilee Souvenir*, Integ. Fish. Proj., October, 1977: 79-116.
- GHIRETTI, F. 1960. Toxicity of octopus saliva against Crustaceans. *Ann. N. Y. Acad. Sci.* 90, 726-741.
- GOODRICH, E. S. 1896. Report on a collection of Cephalopoda from the Calcutta Museum. *Trans. Linn. Soc. London*, 7: 1-24.
- GOPALAKRISHNAN, P. 1970. Some observations on the shore ecology of the Okha coast. *J. Mar. Biol. Ass. India*, 12 (1 & 2): 15-34.
- GOULD, A. A. 1852. 12. Mollusca and shells United States Exploring Expedition 1838-1842 under the command of C. Wilkes, 510 p.

- GRAVELY, F. H. 1941. Shells and other animal remains found on the Madras beach. I. Groups other than snails etc. (Mollusca : Gastropoda). *Bull. Madras Govt. Mus. (New Ser.). Nat Hist.*, 5 (1) : 112 p.
- GRIEB, T. M., AND R. D. BEEMAN. 1978. A study of spermatogenesis in the spawning population of the squid, *Loligo opalescens* In: Recksiek, C. W. and H. W. Frey (eds.) Biological, oceanographic, and acoustic aspects of the market squid, *Loligo opalescens* Berry. *Calif. Dept. Fish. and Game, Fish Bull.*, 169 : 11-21.
- GRIFFIN, L. E. 1900. The anatomy of *Nautilus pompilius*. *Mem. Nat. Acad. Sci.*, 8 (5) : 1-197.
- GRIMPE, G. 1926. Biologische Beobachtungen an *Sepia officianales*. *Verhandl. D. Zool. Gen. Suppl. Zool. Anz.* 31 : 148-153.
- GULLAND, J. A. (Ed.). 1970. The fish resources of the ocean. FAO/Fishing News (Books) Ltd., Surry, England, 255 p.
- HAMABE, M., C. HAMURO AND M. OGURA. 1982. *Squid jigging from small boats*. FAO Fishing Manuals, Fishing News Books Ltd., Farnham, England, 74 p.
- HAMABE, M., T. KAWAKAMI, Y. WATABE AND T. OKUTANI. 1976a. Perspectives for Japanese Overseas squid fisheries. *FAO Fish. Rep.* 170 (Suppl. 1) : 47-52.
- HAMABE M. T. KAWAKAMI, Y. WATABE T. OKUTANI AND K. IKEDA. 1976b. Review of cephalopod resources and their exploitation by Japan. *FAO Fish. Rep.* 170 (Suppl. 1) : 1-3.
- HAMURO, C. AND S. MIZUSHIMA. 1976. Concept and design of the 99 GT Squid jigging vessel. *FAO Fish. Rep.* 170 (Suppl. 1) : 103-106.
- HANKO B. 1913. Über einen gespaltenen arm von *Octopus vulgaris*. *Wilhelm Roux Arch. Entw. Mech. Org.* 37 : 217-222.
- HERDMAN W. A. 1903-1906. *Report to the Government of Ceylon on the Pearl Oyster Fisheries of the Gulf of Mannar (with Supplementary Reports upon the Marine Biology of Ceylon Naturalists)*. *Roy. Soc. London* 1 : 1-307 : 2 : 1-300 : 3 : 1-384 : 4 : 1-326 : 5 : 1-452.
- HERNANDO A. M. (JR) AND E. C. FLORES. 1981. The Philippines squid fishery : A review. *Mar. Fish. Rev.* 43 (1) : 13-20.
- HIDA, T. S. AND W. T. PEREYRA. 1966. Results of bottom trawling in Indian Seas by R/V ANTON BRUNN in 1963. *Proc. Indo-Pacific Fish. Coun.* 11 (2) : 156-171.
- HIXON, R. F. 1983. *Loligo opalescens*. In Ed. P. R. Boyll Cephalopod Life-Cycles. Vol. I. Species accounts. Academic Press. pp. 95-114.
- HODGKIN, A. L. 1964. The conduction of the nervous impulse. Liverpool Univ. Press, Liverpool, England, pp. 20-29.
- HORNELL, J. 1917. The edible molluscs of Madras Presidency. *Madras Fish. Bull.*, 11 : 1-51.
- HORNELL, J. 1922. The common molluscs of South India. *Madras Fish. Bull.*, 14 : 97-215.
- HORNELL, J. 1950. Fishing in many waters. Chapter XV. Fishing for *Octopus*, Cuttlefish and Squid. *Cambridge Univ. Press. Cambridge*, 130-135.
- HORNELL, J. 1951. *Indian Molluscs. Bombay Nat. Hist. Society, Bombay*, 96 p.
- HOWARD, F. G. 1981. Cephalopods : An under utilized resource. *Scottish Fisheries Bulletin*, 46 : 26-29.
- HOYLE, W. E. 1885a. Brief notice of the 'Challenger' Cephalopoda (p. 472). *Rep. Scient. Resul. Voy. 'Challenger' (1873-76)*, Narrative I, 657 p.
- HOYLE, W. E. 1885b. Diagnoses of new species of Cephalopoda collected during the cruise of H.M.S. 'Challenger'. Part I. The Octopoda. *Ann. Mag. nat. Hist. Ser. 5*, 15 : 222-236.
- HOYLE, W. E. 1885c. Diagnoses of new species of Cephalopoda collected during the cruise of H.M.S. 'Challenger' Part II. The Decapoda. *Ann. Mag. nat. Hist. Ser. 5*, 16 : 181-203.
- HOYLE, W. E. 1885d. Preliminary report on the Cephalopoda collected by H.M.S. 'Challenger'. Part I. The Octopoda *Proc. Roy. Soc. Edinburgh*, 13 : 94-114.
- HOYLE, W. E. 1885e. Preliminary report on the Cephalopoda collected by H.M.S. 'Challenger'. Part II. The Decapoda *Proc. Roy. Soc. Edinburgh*, 13 : 281-310.
- HOYLE, W. E. 1886. Report on the Cephalopoda collected by H.M.S. 'Challenger' during the years 1873-1876. *Rep. Scien Resul. Voy. 'Challenger' (Zoology)*, 16 (44) : 1-245.
- HOYLE, W. E. 1904a. *Sepia burnupi* n. sp. from Natal. *J. Conch. London*, 11 : 27-28.
- HOYLE, W. E. 1904b. Report on Cephalopoda collected by Prof. Herdman at Ceylon, 1902. *Rep. Ceylon Pearl Oyster Fish.* 2, Suppl. 14 : 185-200.
- HOYLE, W. E. 1905. The Cephalopoda. In: S. Gardiner. *The Fauna and Geography of the Maldive and Laccadive Archipelagoes*, 2, Suppl. 1 : 575-988.
- HOYLE, W. E. 1907a. The Cephalopoda. The marine fauna of Zanzibar and East Africa from collections made by Cyril Crossland in 1901-1902. *Proc. Zool. Soc. London*, 450-461.
- HOYLE, W. E. 1907b. Reports on the marine biology of the Sudanese Red Sea. 6. On the Cephalopoda. *J. Linn. Soc (Zool.)*, 31 : 35-43.
- HURLEY, A. C. 1977. Mating behaviour of the squid *Loligo opalescens*. *Mar. Behav. Physiol.*, 4 : 195-203.
- HURLEY, G. V. 1980. Recent development in the squid, *Illex illecebrosus* fishery of Newfoundland, Canada. *Mar. Fish Rev.*, 42 (7-8) : 15-22.
- IMBER, M. J. 1975. Lycoteuthid squids as prey of petrels in New Zealand Seas. *N. Z. J. Mar. Freshw. Res.*, 9 : 483-492.
- IMBER, M. J. 1978. The squid families Cranchiidae and Gonatidae. (Cephalopoda : Teuthoidea) in the New Zealand region. *New Zealand J. Zool.* 5 (3) : 445-484.
- INSTITUTE OF MARINE RESEARCH. 1975. Report on Cruise Nos. 1 and 2 of R/V DR. FRIDTJOF NANSEN, Indian Ocean Fishery and Development Programme. Pelagic Fish Assessment Survey of North Arabian Sea. Bergen, Institute of Marine research, 15 p.

- ISHI, M. 1977. Studies on the growth and age of the squid, *Ommastrephos bartrami* (Le Sueur) in the Pacific off Japan. *Bull. Hokkaido Reg. Fish. Res. Lab.*, (42): 25-36.
- IVERSEN, I. L. K. AND L. PINKAS. 1971. A pictorial guide to beaks of certain eastern Pacific Cephalopods. In: Food habits of Albacore, bluefin tuna and Bonito in Californian Waters. *Fish. Bull.*, 152 : 83-105.
- JAMES, P. S. B. R. 1967. The ribbon fishes of the family Trichiuridae of India. Memoir 1, *Mar. Biol. Ass. India*, 228 p
- JAUNICO, M. 1980. Development in South American squid fisheries. *Mar. Fish. Rev.*, 42 (7-8): 10-14.
- JAYABALAN, N. AND K. RAMAMURTHI. 1977. Cephalopods of Porto Novo. *J. Annamalai Univ. (Sci.)*, 31 : 29-34.
- JAYAPRAKASH, A. A. 1974. Food and feeding habits of juveniles of 'Koth' *Orotihoides brunneus* (Day) in Bombay waters. *Indian J. Fish.*, 21 (1): 127-140.
- JMFRCC. 1980. Report of feasibility study 1978 on squid jigging fisheries in the southwestern Pacific Ocean, 178 p.
- JONES, R. 1981. The use of length composition data in fish stock assessments (with notes on VPA and COHORT analysis). *FAO Fish. Circ.*, (734) : 55 p.
- JONES, S. 1968. The molluscan fishery resources of India. *Proc. Symp. Mollusca*, Mar. Biol. Ass. India, Pt. 111 : 906-918.
- JOTHINAYAGAM, J. T. 1981. Studies on *Sepiella inermis* (Ferrussac and d'Orbigny) population occurring along the Madras coast. *Proc. Symp. Ecol. Anim. Popul.*, Zool. Surv. India, Pt. 1 : 83-89.
- JUANICO MARCELO, 1983. Squid Maturity Scales for population analysis. In: Caddy J.F. (ed). Advances in Assessment of Cephalopod Resources. *FAO Fish. Tech. Pap.* (231) : 341-378.
- KAGWADE, P. V. 1969. Food and feeding habits of *Polynemus heptadactylus* Cuv. and Val. *Indian J. Fish.*, 16 (1 & 2), 188-197.
- KALAVATI, C. AND C. C. NARASIMHAMURTI. 1977. *Steinhausia spraguei* n.s.p. a microsporidian parasite of the excretory cells found in the renal appendages of *Sepia elliptica*. *Rivista Parassit.* 38(2-3) : 271-275.
- KALAVATI, C. AND C. C. NARASIMHAMURTI 1980. A new dicyemid mesozoan *Dodecadicyema loligoi* n. gen., n. sp. from the renal appendages of *Loligo* sp. *Proc. Indian Acad. Sci (Anim. Sci.)*, 89 (3) : 287-292.
- KALAVATI, C., C. C. NARASIMHAMURTI AND T. SUSEELA 1978. A new species of *Dicyemmennea*, *D. coromandelensis* n. sp. from *Sepia elliptica* Hoyle. *Proc. Indian Acad. Sci.*, 87 B (6) : 161-167.
- KAREKAR, P. S. AND D. V. BAL. 1958. The food and feeding habits of *Polynemus indicus* (Shaw). *Indian J. Fish.*, 5 (1) : 77-94.
- KARNEKAMP, C. 1979. An aberrantly shaped shield of *Sepia* sp. and a response to this. *Kreukel. Amst.*, 15 (7-8) : 60.
- KARPOV, KONSTANTIN, A. AND G. M. CAILLIET 1978. Prey composition of the Market Squid, *Loligo opalascens* Berry in relation to depth and location of capture, size of squid and sex of spawning squid. *Calif. Coop. Ocean Fish. Invest. Repts.* 20 : 51-57.
- KSAHARA, S. AND T. NASUMI. 1976. Present status and future aspects of the fishery for the common squid *Todarodes pacificus* (Steenstrup) in the sea of Japan. *FAO Fish. Rep.*, 170(Suppl. 1): 30-46.
- KAWAKAMI, T. 1980. A review of sperm whale food. *Sci. Rep. Whales Res. Inst.*, (32) : 199-218.
- KAWATA, H., K. KATAYA, U. AND T. TAKAHASHI 1955. Studies on the complete utilization of whole fish IV. The chemical composition of some fish viscera and the soluble feed made from cuttlefish liver. *Bull. Japan. Soc. Sci. Fish.*, 21 (7) : 503-508.
- KLOSS, C. B. 1902. *Andaman and Nicobars*, Reprint 1971, Vivek Publishing House, Delhi, 373 p.
- KORE, B. A. AND M. C. JOSHI 1975. Food of the squid *Loligo duvaucelli* d'Orbigny. *Proc. Indian Acad. Sci.*, 81 B (1) : 20-28.
- KRISHNAMURTHI, B 1957. Fishery resources of the Rameswaram Island. *Indian J. Fish.*, 4 (2) : 229-253.
- KRUMHOLZ, L. A. AND D. P. DE SYLVA. 1958. Some foods of marlins near Bimini, Bahamas. *Fla. Ocar. Res. Publ.*, 28 : 1-31
- KUMARAN, M 1964. Studies on the food of *Euthynnus affinis affinis* (CANTOR), *Auxis thazard* (Lacepede), *Auxis thynnoides* Bleeker and *Sarda orientalis* (Temminck and Schlegel) *Proc. Symp. Scombroid Fishes*, Mar. Biol. Ass. India, Pt. 11 : 599-606.
- KUTHALINGAN, M. D. K., G. LUTHER, S. LAZARUS AND K. PRABHAKARAN NAIR 1982. Experimental trawling off Vizhinjam. *Mar. Fish. Infor. Serv. T & E Ser.*, No. 40 : 5-7.
- LANE, F. W. 1962. *Kingdom of the octopus. The life history of the Cephalopoda.* The worlds of science (Zoology) Pyramid Publications, New York. 287 p.
- LANGE, A. M. AND M. PSISENWINNE, 1980. Biological considerations relevant to the management of squid (*Loligo pealei* and *Illex illecebrosus*) of the northwest Atlantic. *Mar. Fish. Rev.*, 42 (7-8) : 23-38.
- LANGE, A. M. T., AND M. P. SISENWINNE 1983. Squid resources of the northwest Atlantic. In: Caddy, J. F. (ed.), Advance in assessment of world cephalopod resources. *FAO Fish. Tech. Pap.* (231) : 21-54.
- LANGE, M. M. 1920. On the regeneration and finer structure of the arms of the cephalopods. *J. exp. Ecol.* 31 (1) : 1-57.
- LONG, D. AND W. F. RATHJEN 1980. Experimental jigging for squid off the Northeast United States. *Mar. Fish. Rev.*, 42 (7-8) : 60-66.
- LU, C. C. AND M. R. CLARKE. 1975. Vertical distribution of cephalopods at 40°N, 53°N and 60°N at 20°W in the North Atlantic. *J. Mar. Biol. Ass. U.K.* (1975) 55 : 153-163.
- LU, C. C. AND M. R. CLARKE. 1975. Vertical distribution of cephalopods at 11°N, 20°W in the North Atlantic. *Ibid.* (1975) 55 : 369-389.
- LUTHER, G., P. N. RADHAKRISHNAN NAIR, G. GOPAKUMAR AND K. PRABHAKARAN NAIR 1982. Present status of small-scale traditional fishery at Vizhinjam. *Mar. Fish. Infor. Serv. TN & E Ser.*, o. 38 : 1-16.

- MAES, V. O. 1967. The littoral marine molluscs of Cooco—Keeling Islands (Indian Ocean). *Proc. Acad. Nat. Sci. Phila.*, 119 (4): 93-217.
- MAHADEVAN, S. AND K. NAGAPPAN NAYAR 1967. Underwater ecological observations in the Gulf of Mannar off Tuticorin. *J. Mar. Biol. Ass. India*, 9 (1): 147-163.
- MAHADEVAN S. AND K. NAGAPPAN NAYAR 1974. Ecology of pearl oysters and chank beds. The commercial molluscs of India. *Bull. Centr. Mar. Fish. Res. Inst.*, 25: 106-121.
- MAKSIMOV, V. P. 1969. Pitanie bol'shegla zogo tuntsa (*Thunnus obesus* Lowe) i mechry by (*Xiphias gladius* L.). Vostochnoi chasti tropichesko i Atlantiki, Atl. Nauchno-Issled. Int. Rybn. Khoz. Okenogr. (Atl. NIRO), 25: 87-99 (Engl. transl. Fish. Res. Bd. Can. Transl. Ser. 2248).
- MASSEY, A. L. 1916. The Cephalopoda of the Indian Museum. *Rec. Indian Mus.*, 12: 185-247.
- MASSEY, A. L. 1927. The Cephalopoda of the South African Museum. *Ann. S. African Mus.*, 25: 151-167.
- MATSUMOTO, G. 1976. Transportation and maintenance of adult squid (*Doryteuthis bleekeri*) for physiological studies. *Biol. Bull.*, 150: 279-285.
- MAY R. M. 1933. La formation des terminaisons nerveuses dans les ventouses du bras regeneré du cephalopode *Octopus vulgaris* Lam. *Ann. St. Oceanogr. Salammbô* 7: 1-15.
- MEENON, K. K. P. 1978. Fish processing industry in India. *Proc. Symp. Fish Utilization Technology and Marketing in the IPFC Region*, 18th Session, Manila, Philippines, 73-84.
- MERCER, M. C. 1974. Modified Leslie - Delany assessments of the northern pilot whale (*Gobicephalus melaena*) and annual production of the short-finned squid (*Illex illecebrosus*) based upon their interaction at Newfoundland. *ICNAF Res. Doc.*, 74/49: 14p.
- MERCER, M. C., R. K. MISRA, G. V. HURLEY. 1980. Sex determination of the ommastrephid squid *Illex illecebrosus* using Beak morphometrics. *Can. J. Fish. Aquat. Sci.*, 37: 283-286.
- MIENIS, H. K. 1977. Squid from the stomach of a deep water shark. *Correspondentblad ned. Malac. Veren.*, 178: 707.
- MIENIS, H. K. 1978. Who found *Spirula* or *Argonauta* on the Mediterranean coast of Israel or in the Red Sea *Levanina*, 15: 170-172.
- MIMURA, K. AND STAFF OF NFRFL 1963. Synopsis of biological data on yellowfin tuna, *Neothunnus macropterus* Temminck and Schlegel, 1842. *FAO Fish. Rep.* 6 (2): 319-349.
- MISAKI, H. AND T. OKUTANI 1976. Studies on early life history of Decapodan Mollusca—VI. An evidence of spawning of an oceanic squid, *Thysanoteuthis rhombus* Trochel, in the Japanese waters. 'Venus', *Jap. Jour. Malacology*, 35 (4): 211-213.
- MOJUMDER, P. 1969. Food of the catfish *Tachysurus thalassurus* (Ruppell). *Indian J. Fish.*, 16 (1 & 2): 161-169.
- MOJUMDER, P. AND S. S. DAN 1979. Studies on food and feeding habits of catfish *Tachysurus tenuispinis* (Day). *Indian J. Fish.*, 26 (1 & 2): 115-124.
- MOSES, S. T. 1948. A preliminary report on the Cephalopoda of Baroda. *Bull. Dept. Fish. Baroda State*, 13: 1-3.
- MOSES, S. T. 1949. A preliminary report on the cephalopods of Baroda. *Proc. 35th Indian Sci. Congr.*, 198.
- MOYNIHAN, M. 1975. Conservation of displays and comparable stereotyped patterns among cephalopods. In: Eds. Bascends, Beer and Manning: *Function and Evolution in Behaviour*, Chapter 13: 276-291.
- MOYNIHAN, M. 1983. Notes on the behaviour of *Idiosepius pygmaeus* (Cephalopoda: Idiosepiidae). *Behaviour*, 85: (1-2): 42-57.
- MOYNIHAN, M. AND A. RODANICHE, 1977. Communications, Crypsis and mimicry among Cephalopods. In: *How animals communicate* (Seb-cock, T.A. Ed). Indiana Univ. Press, Bloomington.
- MOYNIHAN, M. AND A. F. RODANICHE. 1982. Behaviour and Natural History of the Caribbean reef squid *Sepioteuthis sepioides* with a consideration of social, signal and defensive pattern. for difficult and dangerous environments. pp. 1-151. Verlag Paul Parey. Berlin and Hamburg.
- MPEDA 1976. Processing of cuttlefish and squid for export. *Indian Sea Foods*, XII (2 & 3): 21-29.
- MPEDA 1985. *Statistics of marine products exports 1983*. The Marine Products Export Development Authority, Cochin 264 p.
- MUKUNDAN, C. 1968. Molluscs in Indian tradition and economy *Souvenir, Symp. Mollusca*, Mar. Biol. Ass. India, Cochin, January 12-16, 1968: 45-52.
- MURATA, M. AND M. IANÉ, 1977. Some information on the ecology of the oceanic squid, *Ommastrephes bartramii* (Lesueur) and *Onychoteuthis borealis japonicus* Okada in the Pacific Ocean of Northeastern Japan. *Bull. Hokkaido Reg. Fish. Res. Labs*, (42): 1-23.
- MURATA, M., M. ISEI, AND M. OSAKI 1981. On the regeneration of tentacle of the oceanic squid *Ommastrephes bartramii* (Lesueur). *Bull. Hokkaido Reg. Fish. Res. Lab.*, 46: 1-14.
- MUTHU, M. S., K. A. NARASIMHAM, G. SUDHAKARA RAO, Y. APPANNA SASTRY AND P. RAMALINGAM 1975. On the commercial trawl fisheries off Kakinada during 1967-70. *Indian J. Fish.*, 22 (1 & 2): 171-186.
- NAGABHUSHANAM, R. 1968a. Physiology of chromatophores in Cephalopoda. *Proc. Symp. Mollusca*, Mar. Biol. Ass. India, Pt. II: 568-571.
- NAGABHUSHANAM, R. 1968b. Studies on neurosecretion in Mollusca. *Proc. Symp. Mollusca*, Mar. Biol. Ass. India, Pt. II: 572-579.
- NAIR, R. V. AND K. K. APPUKUTTAN. 1973. Observations on the food of deep sea sharks *Halasturus halsidus* (Alcock), *Eridacnis radcliffei* Smith and *Isago omarensis* Compagno and Springs *Indian J. Fish.*, 20 (2): 575-583.
- NAIR, S. GOPALAN 1958. A preliminary account of the fisheries of Vizhinjam. *Indian J. Fish.*, 5 (1): 32-55.

- NARASIMHAM, K. A., G. SUDHAKARA RAO, Y. APPANNA SASTRY AND W. VENUGOPALAN 1979. Demersal fishery resources off Kakinada with a note on economics of commercial trawling. *Indian J. Fish.*, 26 (1 & 2) : 90-100.
- NARASIMHAMURTI, C. C. 1979. The emeriid, *Aggregata kudoi* n. sp. from *Sepia elliptica*. *Angewandte parasit*, 20 (3) : 154-158.
- NATARAJAN, N. AND R. NATARAJAN 1980. Food and feeding habits of *Psettoodes erumei* (Bloch and Schn.) and *Pseudorhombus arsius* (Ham. Buch.). *Matsya*, 6 : 30-42.
- NATSUKARI, Y. 1983. Taxonomical and morphological studies on the Loliginid squids—III. *Nipponololigo*, a new subgenus of the Genus *Loligo*. *Venus, The Jap. Jour. Malacol.*, 42 (4) : 313-318.
- NAZUMI, T. 1975. Notes on the species of squids collected in the Tajima region of the Japanese Sea, 1974. *Bull. Hyogo Pref. Fish. Stn.*, 15 : 9-13 (in Japanese)
- NELSON, M. *et al.*, 1983. On the fishery and biology of the giant squid *Dosidicus gigas* in the Gulf of California, Mexico. In: Caddy, J. F. (ed.), *Advances in assessment of world cephalopod resources*. *FAO Fish. Tech. Pap.*, 231 : 306-340
- NIHIMURA S. 1966. Notes on the occurrence and biology of the oceanic squid, *Thysanoteuthis rhombus* Troscchel in Japan. *Publ. Seto. Mar. Biol. Lab.*, 14 (4) : 327-349.
- NIXON, N. AND J. B. MESSENGER 1977. The biology of the cephalopods. Proceedings of a Symposium held at the Zoological Society of London on 10 and 11 April 1975. *Symp. Zool. Soc. London*, 38 : 615 p.
- OGURA, M. 1976. Fishing tackle and fishing efficiency in squid jigging. *FAO Fish. Rep.*, 170 (Suppl. 1) : 99-102.
- OGURA, M. AND T. NASUMI 1976. Fishing lamps and light attraction for squid jigging. *FAO Fish. Rep.*, 170 (Suppl. 1) : 93-98.
- OKADA, Y. 1933. Animal of *Spirula*. *Venus*, 3 (1) : 144-145.
- OKUTANI, T. 1970. A small collection of gastropod and decapod molluscs from the Seychelles Bank, Indian Ocean, by the trawling vessel KOYO-MARU, 1968. *Venus, The Jap. Jour. of Malacology*, 29 (4) : 123-130.
- OKUTANI, T. 1973a. Preliminary note on planktonic Oegopsid cephalopod larvae obtained by the International Indian Ocean Expedition. *J. mar. biol. Ass. India*, 15 (1) : 213-217.
- OKUTANI, T. 1973b. Guide and keys to squid in Japan. *Bull. Tokai. Reg. Fish. Res. Lab.*, (74) : 83-111.
- OKUTANI, T. 1977. Stock assessment of cephalopod resources fished by Japan. *FAO Fish. Tech. Pap.*, (173) : 62 p.
- OKUTANI, T. 1980. Useful and latent cuttlefish and squids of the world. Published from National Coop. Ass. of Squid Processors for the 15th Anniv. of its foundation : 66 p.
- OKUTANI, T. AND SUZUKI, K. 1975. Concurrence of bathypelagic *Spirula spirula* and epipelagic *Argonauta boettgeri* in stomach contents of a yellowfin tuna from the Indian Ocean. *Venus, The Jap. Jour. of Malacology*, 34 (1 & 2) : 49-51.
- OKUTANI, T. AND TUNG, I. H. 1978. Review of biology of commercially important squids in Japanese and adjacent waters. 1. *Symplectoteuthis oualaniensis* (Lesson). *Veliger*, 21 (1) : 87-94.
- OOMMEN, V. P. 1966. The Octopoda of the Kerala coast. I. A new species of the genus *Berrya*, Adam 1943. *Bull. Dept. Mar. Biol. Oceanogr. Univ. Kerala*, 2 : 51.
- OOMMEN, V. P. 1967. New records of octopoda from the Arabian Sea. *Bull. Dept. Mar. Biol. Oceanogr., Univ. Kerala*, 3 : 29.
- OOMMEN, V. P. 1971. *Octopus varunae*, a new species from the west coast of India. *Bull. Dept. Mar. Biol. Oceanogr., Univ. Cochin*, 5 : 69.
- OOMMEN, V. P. 1975. New records of decapod cephalopods from the Arabian Sea. *J. mar. biol. Ass. India*, 17 (2) : 186-190.
- OOMMEN, V. P. 1976. A new species of the genus *Opisthoteuthis* Verrill, 1883 (Cephalopoda : Mollusca) from the southwest coast of India. *J. mar. Biol. Ass. India*, 18 (2) : 368-374.
- OOMMEN, V. P. 1977a. Two octopods new to Arabian Sea. *Indian J. Fish.*, 24 (1 & 2) : 25-32.
- OOMMEN, V. P. 1977b. Studies on the food, feeding and fishery of certain cephalopods from the west coast of India. *Bull. Dept. Mar. Sci. Univ. Cochin*, 8 : 73-152.
- ORTMANN, A. S. 1891. Cephalopoden von Ceylon. *Zool. Jb. Syst.*, 5 : 669-678.
- OSAKO, M. AND M. MURATA 1983. Stock assessment of cephalopod resources in the Northwestern Pacific. In: Caddy, J. F. (ed.), *Advances in assessment of world cephalopod resources*. *FAO Fish. Tech. Pap.*, (231) : 55-144.
- OWEN, R. 1832. Memoir on the Pearly Nautilus *Nautilus pompilius* Linnaeus, London, 68 p.
- PADMANABHAN, V. 1970. On new fish products—Cuttlefish and squids. *Quart. Newsletter, Govt. of India, Indo-Norwegian Project*, 2 (2 & 3) : 4-6.
- PANDIT, A. R. AND N. G. MAGAR 1972. Chemical composition of *Sepia orientalis* and *Loligo vulgaris*. *Fish Technol.*, 9 (2) : 122-125.
- PARIN, N. V. 1967. The materials on the distribution and biology of the snake mackerel—*Gempylus serpens* Cuv. (Pisces) Gempylidae in the Pacific and Indian Ocean : *Vopr. Ichthyology*, 7 (6) : (in Russian), 990-999.
- PARONA, C. 1900. Sulla dicotomia della braccia nei cefalopodi. *Boll. Musel. Lab. Zool. Anat. Comp. r. Univ. Genova*, 96 : 1-7.
- PAULY, D. AND N. DAVID 1981. ELEFANI, a BASIC program for the objective extraction of growth parameters from length frequency data. *Meeresforsch.*, 28 (4) : 205-211.
- PAYNE, R. L. 1978. Note on possible priorities for future commercial fisheries of demersal and small pelagic species. *Report of the FAO/Norway Workshop on the Fishery Resources of the North Arabian Sea*, 2 : 194-201.
- PFEFFER, G. 1912. Die Cephalopoden der Plankton—Expedition. Zugleich eine monographische Übersicht der Oegopsiden Cephalopoden. *Ergebnisse der Plankton—Expedition der Humboldt—Stiftung*, 2 : 1-815.
- PERRIN, W. F., R. R. WARNER, C. H. FISCUS AND D. B. HOLTS 1973. Stomach contents of porpoise *Stenella* spp. and Yellowfin tuna, *Thunnus albacares*, in mixed-species aggregations. *Fish. Bull. U.S.*, 71 : 1077-1092.

- PICKFORD, G. E. 1946. *Vampyroteuthis infernalis* Chun. An archaic disbranchiate cephalopod. I. Natural history and distribution. *Dana Rept.*, 29 : 1-40.
- PICKFORD, G. E. 1949a. Distribution of the eggs of *Vampyroteuthis infernalis* Chun. *J. mar. Res.*, 8 (1) : 73-83.
- PICKFORD, G. E. 1949b. *Vampyroteuthis infernalis* Chun. An archaic dibranchiate cephalopod. II. External anatomy. *Dana Rept.*, 32 : 1-132.
- PICKFORD, G. E. 1952. The Vampyromorpha of the Discovery Expedition. *Discovery Repts.*, 26 : 197-210.
- PICKFORD, G. E. 1959. Vampyromorpha. *Galathea Rept.*, 1 : 243-253.
- PICKFORD, G. E. 1974. *Cistopus indicus* (Orbigny) : A common Indo-Malayan species of Octopus. *J. mar. biol. Ass. India*, 16 (1) : 43-48.
- PORTMANN, A. 1952. Les luas dorsaux de *Tremoctopus violaceus* delle chiaje. *Revue Suisse Zool.*, 59 (13) : 288-293.
- PRASAD, R. R. AND P. V. RAMACHANDRAN NAIR 1973. India and the Indian Ocean fisheries. *J. Mar. Biol. Ass. India*, 15 (1) : 1-19.
- RABINDRANATH, P. 1966. Biology and seasonal distribution of the pelagic food fishes of Travancore coast. *Kerala Univ. Publ.*, 1-140.
- RADHAKRISHNAN, N. 1973. Pelagic fisheries of Vizhinjam. *Indian J. Fish.*, 20 (2) : 584-598.
- RAHAMAN, A. A. 1967. Gonad and hepatic indexes of the Indian cephalopods *Sepioteuthis arcifinns* Gould and *Sepia aculeata* Ferrussae and d'Orbigny. *Proc. Indian Acad. Sci.* 67 B (3) : 104-113.
- RAHAMAN, A. A. 1980. Ecological observations on spawning of a few invertebrates of the Madras coast. *J. Madurai Kamaraj Univ. (Sci.)*, 9 (1) : 71-77.
- RAJAGOPAL, K. V., S. RAVICHANDRA REDDY AND K. SAKUNTALA 1977. Fish baits : Need for collection, care, preparation and propagation in India. *Seafood Export Jour.*, 9 (5) : 9-13.
- RAJU, G. 1964. Observations on the food and feeding habits of the oceanic skipjack *Katsuwonus pelamis* (Linnaeus) of the Laccadive Sea during the years 1958-59. *Proc. Symp. Scombroid Fishes*, Mar. Biol. Ass. India, Pt. II : 607-625.
- RANCUREL, P. 1971. Les contenus stomacaux de *Alepisaurus ferox* dans le Sud-ouest Pacifique (Cephalopods). *Cah. O.R.S.T. O.M. Ser. Oceanogr.* 8 (4) 3-87.
- RANCUREL, P. 1976. Note sur les Cephalopodes des contenus stomacaux de *Thunnus albacares* (Bonnaterre) dans le Sud-ouest Pacifique. *Ibid.*, 14(1) : 71-80.
- RAO, K. SRINIVASA 1964. Observations on the food and feeding habits of *Scomberomorus guttatus* (Bloch and Schneider) and the juveniles of *S. lineolatus* (Cuvier and Valenciennes) *S. commerson* (Lacepede) from the Waltair coast. *Proc. Symp. Scombroid Fishes*, Mar. Biol. Ass. India Pt. II : 591-598.
- RAO, SUBBA M. V. 1977. Molluscs of Digha coast, West Bengal. 2. Bivalvia, Scaphopoda and Cephalopoda. *Newsl. Zool. Surv. India*, 3 (5) : 298-302.
- RAO, K. VENKATASUBBA 1968. Some aspects of the biology of 'ghol' *Pseudosquilla diacanthus* (Lacepede). *Indian J. Fish.*, 10 (2) : 413-459.
- RAO, K. VIRABHADRA 1954. Biology and fishery of the Palk-Bay squid *Sepioteuthis arcifinns* Gould. *Indian J. Fish.*, 1 : 37-66.
- RAO, K. VIRABHADRA 1958. Molluscan Fisheries. *Fisheries of the West Coast of India. Cent. Mar. Fish. Res. Inst.*, : 55-59.
- RAO, K. VIRABHADRA 1969a. Molluscs have many uses. *Indian Frmg.*, 29 (9) : 41-45.
- RAO, K. VIRABHADRA 1969b. Distribution pattern of the major exploited marine fishery resources of India. *Bull. Cent. Mar. Fish. Res. Inst.*, 6 : 1-69.
- RAO, K. VIRABHADRA 1973. Distribution pattern of the major exploited marine fishery resources of India. *Proc. Symp. Living Resources of the Seas around India*, CMFRI Special Publication : 18-101.
- RAO, K. VIRABHADRA AND K. DORAIRAJ 1968. Exploratory trawling off Goa by the Government of India fishing vessels. *Indian J. Fish.*, 15 (1 & 2) : 1-14.
- RAO, S. R., S. M. SHAH AND R. VISVANATHAN 1968. Calcium, Strontium and Radium content of molluscan shells. *J. Mar. Biol. Ass. India*, 10 (1) : 159-165.
- RAY, H. C. 1937. Contribution to the knowledge of the molluscan fauna of Maungmagan, Lower Burma (with descriptions of one new genus and species of the Family Turridae (Gastropoda)). *Indian Mus., Calcutta*, 8 : 1-150.
- RAYUDU, G. V. AND P. CHANDRA MOHAN 1982. A note on the fishery of squids and cuttlefish of Visakhapatnam. *Seafood Exp. Jour.*, 14 (4) : 23-27.
- REES, W. J. 1949. Note on the hooked squid, *Onychoteuthis banksi*. *Proc. malac. Soc. Lond.*, 28 : 43-45.
- RIGGENBACH, E. 1901. Beobachtung uber selbstverstummung. *Zool. Anz.*, 24 : 587-593.
- ROBSON, G. C. 1921. On the Cephalopoda obtained by the Percy Sladen Trust Expedition to the Indian Ocean in 1905. *Trans. Linn. Soc. London*, 17 (2) : 429-442.
- ROBSON, G. C. 1924a. Preliminary report on the Cephalopoda (Decapoda) procured by the S. S. 'Pickle'. *Rep. Fish. mar. biol. Surv. Union S. Africa*, 3, *Spec. Rept.*, 9 : 1-14.
- ROBSON, G. C. 1924b. On the Cephalopoda obtained in South African waters by Dr. J. D. F. Gilchrist in 1920-1921. *Proc. Zool. Soc. London* : 589-686.
- ROBSON, G. C. 1926a. Notes on the cephalopoda. No. 1. Descriptions of two new species of *Octopus* from southern India and Ceylon. *Ann. Mag. nat. Hist.*, Ser. 9, 17 : 159-167.
- ROBSON, G. C. 1926b. The Cephalopoda obtained by the S. S. 'Pickle' (Supplementary Report). *Fisheries and Marine Biological Survey Report*, No. 4, for the year 1925, 1-6.
- ROBSON, G. C. 1929. *A Monograph of the Recent Cephalopoda. Part I. Octopodinae*. British Museum (Nat. Hist.) London, 236 p.

- ROBSON, G. C. 1932. A monograph of the recent cephalopoda. Part II. The Octopoda (excluding the Octopodinae), London. British Museum (Natural History), 359 p.
- ROPER, C. F. E. 1966. A study of the genus *Enepterothis* (Cephalopoda : Oegopsida) in the Atlantic ocean, with a redescription of the type species, *E. leptura* (Leach, 1817). *Dana Rept.*, 66 : 1-46.
- ROPER, C. F. E., M. J. SWEENEY AND C. E. NAUEN 1984. Cephalopods of the world. An annotated and illustrated catalogue of species of interest to fisheries. *FAO Fish. Synop.*, (125) 3 : 277 p.
- ROPER, C. F. E. AND R. E. YOUNG. 1975. Vertical distribution of pelagic cephalopods. *Smithsonian Contr. Zool.*, No. 209 : 1-51.
- ROPER, C. F. E., R. E. YOUNG AND G. L. VOSS 1969. An illustrated key to the families of the order Teuthoidea (Cephalopoda). *Smithson. Contrib. Zool.*, 13 : 32 p.
- ROSENBERG, P. 1973. The Giant Axon of the squid : A useful preparation for neurophysiological and pharmacological studies. F. Reiner Ed. *Methods of neurochemistry*, Vol. IV, Marcel Dekker, New York, 327 pp.
- SAITO, R. 1976. The Japanese fishery (jigging) for *Nototodarus sloani sloani* in New Zealand waters. *FAO Fish. Rep.*, 170 (Suppl. 1) : 53-60.
- SANDERS, M. J. 1979. Development of fisheries in areas of the Red Sea and Gulf of Aden. Preliminary stock assessment for the cuttlefish *Sepia pharaonis* taken off the coast of the People's Democratic Republic of Yemen. *FAO Field Document*, FAO-FI-RAB-77/008, 58 p.
- SANDERS, M. J. 1981. Revised stock assessment for the cuttlefish *Sepia pharaonis* taken off the coast of the Peoples' Democratic Republic of Yemen. *RAB/77/008/13*. 44p. *FAO*, Project for the development of fisheries in areas of the Red Sea and Gulf of Aden, Cairo, Egypt.
- SANDERS, M. J. AND M. BOUHLEL 1981. Interim report of a mesh selection study conducted in the People's Democratic Republic of Yemen on the cuttlefish *Sepia pharaonis*. *FAO/UNDP Project on Development of Fisheries in areas of the Red Sea and Gulf of Aden* : 35 p.
- SANDERS, M. J. AND M. BOUHLEL 1983. Mesh selection study conducted in the People's Democratic Republic of Yemen on the cuttlefish *Sepia pharaonis*. In : Caddy, J. F. (ed.), *Advances in assessment of World Cephalopod Resources*, *FAO Fish. Tech. Pap.*, 231 : 181-203.
- SANJEVA RAJ, P. J. AND M. KALYANI 1971. *Euprymna morsei* (Verrill, 1881) (Sepiolidae : Cephalopoda) from the Indian Coast. *J. mar. biol. Ass. India*, 13 (1) : 135-137.
- SANTHANAKRISHNAN, G. 1982a. Diversified markets for Indian marine products. *Seafood Export Jour.*, 14 (4) : 9-12.
- SANTHANAKRISHNAN, G. 1982b. Dried squid. Part I. A value-added diversified product and its potential export markets. *Seafood Export Jour.*, 14 (6) : 9-11.
- SANTHANAKRISHNAN, G. 1982c. Dried squid. Part 2. A note on processing, packing and storing. *Seafood Export Jour.*, 14 (7) : 1-13.
- SANTHANAKRISHNAN, G. 1984. Diversification of products and markets. Octopus and un-exploited marine resources for diversification. *Seafood Export Jour.*, 15 (9) : 11-16.
- SARVESAN, R. 1969a. Catalogue of molluscs. 2. Cephalopoda. *Bull. Cent. Mar. Fish. Res. Inst.*, 9 : 23-25.
- SARVESAN, R. 1969b. Some observations on parental care in *Octopus dollfusii* Robson (Cephalopoda : Octopodidae). *J. Mar. Biol. Ass. India*, 11 (1 & 2) : 203-205.
- SARVESAN, R. 1974. V. Cephalopods. In : *The Commercial Molluscs of India*. *Bull. Centr. Mar. Fish. Res. Inst.*, 25 : 63-83.
- SARVESAN, R. 1976. On the occurrence of *Sepia trygonia* (Rochebrune) (Cephalopoda : Sepiidae) in Gulf of Mannar. *Indian J. Fish.*, 23 (1 & 2) : 256-260.
- SABAKI, M. 1929. A monograph of the dibranchiate cephalopods, of the Japanese and adjacent waters. *Fac. Agric. Hokkaido Univ.*, Suppl., 20 : 1-357.
- SASTRY, H. M. C. AND L. M. SRIKAR 1982. Protein and related changes in cuttlefish *Sepia aculeata* in iced storage. *Symposium on Harvest and Post-harvest Technology of Fish*, 24-27 November 1982, Cochin, *Soc. Fish. Technologists*. Abstract.
- SATO, T. 1976. Results of exploratory fishing for *Dosidicus gigas* (d'Orbigny) off California and Mexico. *FAO Fish. Rep.*, 170 (Suppl. 1) : 61-67.
- SATO, T. AND H. HATANAKA 1983. A review of assessment of Japanese distant-water fisheries for cephalopods. In : Caddy, J. F. (ed.), *Advances in assessment of world cephalopod resources*. *FAO Fish. Tech. Pap.*, (231) : 145-180.
- SATYAMURTHI, S. T. 1956. The mollusca of Krusadai Island (In Gulf of Mannar). II. Scaphopoda, Pelecypoda and Cephalopoda. *Bull. Madras Govt. Mus. (New Ser.) Nat. Hist. Sect.*, 1 (2) Pt. 7 : 202 p.
- SAUNDERS, W. B. 1981. The species of living *Nautilus* and their distribution. *Vellger*, 24 (1) : 8-17.
- SEKHARAN, K. V., M. S. MUTHU, K. VENKATA SUBBA RAO, V. RAMAMOZHANA RAO, P. MOJUMDER AND S. REUBEN 1973. Exploratory trawling on the continental shelf along the north-western part of the Bay of Bengal. *Proc. Symp. Living Resources of the Seas around India*, CMFRI Spl. Publication : 280-337.
- SHREEHY, D. J. AND S. F. VIE, 1980. 'Sake-ika' : Dried squid processing equipment and markets. *Marine Fisheries Review*, 42 (7-8) : 92 p.
- SHRNOY, A. S. 1985. Squids from India to Japan. *Infofish marketing Digest*, (FAO), No. 2 : 43-44.
- SHIN, P. K. S. 1982. The Hong Kong Squid Fishery. In *Review of National Squid Fisheries*, IPFC/RRD/82/Inf. 8 (a), March 1982, Sydney, Australia, 10 p.
- SILAS, E. G. 1963. Synopsis of biological data on dogtooth tuna *Gymnosarda unicolor* (Ruppel) 1838 (Indo-Pacific). *FAO Fish. Rep.*, 6 (2) : 877-899.

- SILAS, E. G. 1968. Cephalopoda of the west coast of India collected during the cruises of the research vessel 'VARJUNA', with catalogue of the species known from the Indian Ocean. *Proc. Symp. Mollusca. Mar. Biol. Ass. India, Pt. I*: 277-359.
- SILAS, E. G. 1969a. Exploratory fishing by R. V. VARUNA. *Bull. Cent. Mar. Fish. Res. Inst.*, 12: 86 pp.
- SILAS, E. G. 1969b. Pelagic fisheries of the Indian Ocean. *Indian Frmg.*, 19 (9): 63-66.
- SILAS, E. G., S. K. DHARMARAJA AND K. RENGARAJAN 1976. Exploited marine fishery resources of India—a synoptic survey with comments on potential resources. *Bull. Cent. Mar. Fish. Res. Inst.*, 27: 25 p.
- SILAS, E. G., K. S. RAO, R. SARVESAN, K. P. NAIR AND M. M. MEYAPPAN 1982. The exploited squid and cuttlefish resources of India: A review. *Mar. Fish. Infor. Serv. T & E Ser.*, No. 34: 1-16.
- SILAS, E. G. AND P. P. PILLAI 1982. Resources of tunas and related species and their fisheries in the Indian Ocean. *Bull. Cent. Mar. Fish. Res. Inst.*, 32: 174 p.
- SIVALINGAM, D. AND S. KRISHNA PILLAI 1983. Preliminary experiments on breeding of cephalopods. *Proc. Symp. Coastal Aquaculture.*, Part 2, Mar. Biol. Assn. India, 633-635.
- SIVAPRAKASAM, T. E. 1967. Observations on the food and feeding habits of *Papastromateus niger* (Bloch) of the Saurashtra coast. *Indian J. Fish.*, 10 (1): 140-147.
- SREENIVASAN, A. 1962. Two cases of bacterial discolouration of squids. *Curr. Sci.*, 31 (9): 381-382.
- SREENIVASAN, P. V. 1974. Observations on the food and feeding habits of the 'Torpedo Travally' *Megalaspis cordyla* (Linnaeus) from Vizhinjam Bay. *Indian J. Fish.*, 21 (1): 76-84.
- STENSTRUP, J. J. 1856. Hectocotyldannelsen hos octopods-lægsterne *Argonauta* og *Tremactopus*, oplyst ved Iagttagelse at lignende Dannelsen hos Blacksprunt-terne i Almindelighed K. danske Vidensk. Selsk. Skr., 5 R., 4: 186-215, 2 pl.
- SULLIVAN, D., AND J. M. CULLEN. 1983. Food of the squid *Notodarus gouldi* in Bass Strait. *Aust. J. Mar. Freshw. Res.*, 34: 261-85.
- SULOCHANAN, P. AND M. E. JOHN 1982. Cephalopod resources in southwest coast of India. *Symposium on Harvest and Post-harvest Technology of Fish*, 24-27 November, 1982, Cochin Soc. Fish. Technologists, Abstract.
- SUNDARA, W. C. 1969. Winter population of *Loligo paki* in the Mid-Atlantic bight. *Boll. Bull.*, 137 (1): 202-216.
- SUNDARA, W. C. 1983. *Loligo paki*. In Ed. P. R. Boyle *Cephalopod Life Cycles*, Vol. 1: Species accounts. Academic Press. pp. 115-142.
- SURAYANARAYANAN, A. AND K. K. ALEXANDER 1980. Biochemical studies on the molluscan muscle. 2. Studies on the muscles of some bivalves and cephalopods. *J. Anim. Morph. Physiol.* 27 (1-2): 180-189.
- SURESHAN, C. AND K. V. SOMASHEKHARAN NAIR 1969. Food and feeding habits of the demersal fishes off Bombay. *Indian J. Fish.*, 16 (1 & 2): 56-74.
- TAKAHASHI, T. 1965. Squid meat and its processing. In: *Fish as Food*. G. Borgstrom (ed.), Academic Press, New York: 339-354.
- TAKI, I. 1981. A catalogue of the Cephalopoda of Wakayama Prefecture. In: *A catalogue of molluscs of Wakayama Prefecture, The Province of Kii*. 1. Bivalvia, Scaphopoda and Cephalopoda. Sato mar. biol. Lab. Japan, 301 p.
- TALBOT, F. H. AND M. J. PENNETH 1963. Synopsis of biological data on species of the genus *Thunnus* (*Sensu lato*) (South Africa). *AFO Fish. Rep.*, 6 (2): 608-646.
- TAMPI, P. R. S. 1959. The ecological and fisheries characteristics of a salt water lagoon near Mandapam. *J. Mar. Biol. Ass. India*, 1 (2): 113-130.
- TANIKAWA, E. AND M. SENO 1952. Studies on the complete utilization of the squid (*Ommastrephes sloanii pacificus*) 5. Nutritive value and digestibility of squid meat. *Bull. Fac. Fish. Hokkaido Univ.*, 3 (1): 73-94.
- TASAKI, I. 1968. *Nerve Excitation*. Charles C. Thomas Springfield Illinois, pp. 200-26.
- THEILE, J. 1915. In: Chun, C. *Wiss. Ergebn. Deutsche Tiefsee Exped.*, Bd. 18 Pt. 2.
- THEILASILINGAM, T., G. VENKATARAMAN, K. N. KRISHNA KARTHA AND P. KARUNAKARAN NAIR 1968. Results of the exploratory trawl fishing on the continental slope of the southwest coast of India by M. F. V. 'Kalava'. *Indian J. Fish.* 11 (2): 547-558.
- THORE, S. 1945. On the Cephalopoda of Professor O. Carlgren's Expedition to South Africa in 1935. *K. fysiogr. Sällsk. Lund Forh.*, 15: 49-57.
- TOLL, R. B. AND S. C. HERR. 1981. Cephalopods in the diet of the sword fish, *Xiphias gladius* from the Florida Strait. *Fish. Bull. U.S.* 79(4): 765-774.
- TRETHEWIE, E. R. 1965. Pharmacological effects of the venom of the common octopus, *Hapalochlaena maculosa*. *Toxicol.* 3: 55-59.
- TUNG, IH-HSU 1976. On the reproduction of common squid, *Symplectoteuthis orientalis* (Lesson). *Rep. Inst. Fish. Biol. Taipei*, 3 (2): 26-48 (in Chinese with English summary).
- TUNG, IH-HSU, CHIH-CHENG LAN AND CHEN-CHEN-HU 1973. The preliminary investigation for exploitation of common squid resources. *Rep. Inst. Fish. Biol., Taipei*, 3 (1): 211-247 (in Chinese with English summary).
- TRUONG, A. R. 1974. Fishery management issues in the Indian Ocean. Indian Ocean Programme, FAO, Rome, IOF/CEV/74/35: 39 p.
- UNDP/FAO 1974a. Survey Results 1972/73. *Progress Report No. 6*: 141 p.
- UNDP/FAO 1974b. Plankton—Fish eggs and larvae studies. *Progress Report No. 7*: 21 p.
- UNDP/FAO 1976a. Survey Results 1973/74. *Progress Report No. 12*: 32 p.

- UNDP/FAO 1976b. Survey Results 1974/75. *Progress Report* No. 13 : 21 p.
- UNDP/FAO 1976c. Pelagic fishery Investigation on the southwest coast. *Final Report of the Norwegian Agency for International Development (NORAD) and the Institute of Marine Research Bergen* : 55 p.
- UNDP/FAO 1976d. A synopsis of the information on pelagic resources off the southwest coast of India. *Progress Report* No. 18 : 31 p.
- UNDP/FAO 1977. Report of acoustic survey along the southwest coast of India, November 1976. *Progress Report*, 1. FAO, Rome FIRS-IND/75/0348 : 28 p.
- UNNITHAN, K. A. 1982. Observations on the biology of cuttlefish *Sepiella inermis* at Mandapam. *Indian J. Fish.*, 29 (1 & 2) : 101-111.
- VERGHESE, G. 1981. Present status of small scale fisheries in Lakshadweep. *Bull. Cent. Mar. Fish. Res. Inst.*, 30 B : 60-64.
- VELAIN, C. 1877. Remarques generales au sujet de la faune des iles St. Paul et Amsterdam, Suivies d'une description de la faune malacologique des deux iles. *Archs. Zool. exp. gen.*, 6 : 1-144.
- VENKATARAMAN, R. AND K. DEVADASAN 1978. Marine products processing industry in India : Its growth and future prospects *Proc. Symp. Fish Utilization Technology and marketing in the IPFC Region, 18th Sesson, Manila, Philippines* : 38-44.
- VERRILL, A. E. 1881a. Report on the cephalopods and on some additional species dredged by the U. S. Fish Commission Steamer 'Fish-hawk', during the season of 1880. *Bull. Mus. Comp. Zool.*, 8 : 99-116.
- VERRILL, A. E. 1881b. Regeneration of lost parts in the squid *Loligo pealei*. *Amer. J. Sc.*, (3rd ser.), 21 : 333-334.
- VERRILL, A. E. 1882. Report on the cephalopods of the north-eastern coast of America. *Rep. U. S. Comm. Fish and Fisheries*, 1879, 7 : 211-455.
- Voss, G. L. 1956. A review of the cephalopods of the Gulf of Mexico. *Bull. mar. Sci. Gulf. Carib.*, 6 (2) : 85-178.
- Voss, G. L. 1962. South African cephalopods. *Trans. R. Soc. S. Africa*, 36 (4) : 245-272.
- Voss, G. L. 1963. Cephalopods of the Philippine Islands. *Bull. U. S. nat. Mus.*, 234 : 1-180.
- Voss, G. L. 1967. Some bathypelagic cephalopods from South African waters. *Ann. S. African Mus.*, 50 (5) : 61-88.
- Voss, G. L. 1973. Cephalopod resources of the world. *FAO Fish. Circ.* (149) : 75 p.
- Voss, G. L. 1977. Present status and new trends in cephalopod systematics. *Symp. Zool. Soc. London*, 38 : 49-60.
- Voss, G. L. AND D. S. HERDMAN 1959. *Thysanoteuthis rhombus*, a large cephalopod new to Western Atlantic. *Mar. Lab. Univ. Miami, Nautilus*, 73 (1) : 23-25.
- Voss, G. L. AND G. R. WILLIAMSON 1971. *Cephalopods of Hong-kong*. Government Press, Hongkong : 138 p.
- VOVK, A. N. 1972. Method of determining maturing stages in gonads of the squid *Loligo pealei*. *Zoologicheskii Zhurnal (USSR)*, 51 (1) : 127-132. (Translation Ser. No. 2337, 1973, Fish Res. Bd. Can.)
- WELLS, M. J. 1962. Brain and Behaviour of Cephalopods. Heines mann, London.
- WELLS, M. J. 1966. Cephalopod Sense organs. In [physiology of Mollusca, Edited by K. M. Wilbur and C. M. Younge, New York, Academic Press. Vol. 2 : 523-45.
- WELLS, M. J. 1978. Octopus : Physiology and behaviour of an advanced invertebrate. Chapman and Hall London and John Wiley and Sons, New York, 417 p.
- WELLS, M. J. AND J. WELLS. 1972. Sexual display and mating of *Octopus vulgaris* Cuvier and *O. cyanea* gray and attempts to alter performance by manipulating the glandular condition of animals. *Animal Behav.* 20 : 293-308.
- WILLIAMS, F. 1964. The Scombroid fishes of East Africa. *Proc. Symp. Scombroid Fishes*, Mar. Biol. Ass. India, Pt. I : 107-164.
- WILLIAMS, 1967. Longline fishing for tuna off the coast of East Africa, 1958-1960. *Indian J. Fish.*, 10 (1) : 233-290.
- WILLY, A. 1902. Contribution to the natural history of the pearly nautilus Part 6. of *Zoological Results based on material from New Britain, New Guinea, Loyalty Islands*. (34) Cambridge.
- WINCKWORTH, R. 1926. A list of Cephalopoda in the Colombo Museum. *Spolia Zeylan.*, 13 : 323-331.
- WINCKWORTH, R. 1936. Marine Mollusca from South India and Ceylon. 4. A new Indian *Sepia*. *Proc. Malac. Soc. London* 22 : 16-23.
- WOLFF, G. A. 1984. Identification and estimation of size from the beaks of 18 species of Cephalopods from the Pacific Ocean. *NOAA Tech. Rept. NMFS* 17 : 1-50.
- WOLFF, G. A. AND J. H. WORMUTH. 1979. Biometric Separation of the beaks of two morphologically similar species of the squid family Ommastrephidae. *Bull. Mar. Sci.* 29(4) : 587-592.
- WORMS, J. 1983. World fisheries for cephalopods : A synoptic overview. In : Caddy J. E. (ed.), *Advances in Assessment of world cephalopod Resources*, *FAO Fish. Tech. Pap.*, (231) : 1-20.
- WORMUTH, J. H. 1976. The biogeography and numerical taxonomy of the Oegopsid squid family Ommastrephidae in Pacific Ocean. *Bull. Scripps. Inst. Oceanogr.*, 23 : 90 p.
- WULKER, G. 1920. Ueber Cephalopoden des Roten Meeres. *Sneckenbergiana*, 2 : 48-58.
- YAJIMA, S. AND S. MITSUGI 1976. Japanese squid jigging gear. *FAO Fish. Rep.*, 170 (Suppl. 1) 85-88.
- YAMANAKA, H. 1976. Summery Report on cruise of R. V. *SOHYO MARU* in the Northern Arabian Sea, Oct. 1975-Feb. 1976. Far Seas Fisheries Research Laboratory, Japan Fisheries Agency pp. 1-9 with 30 figs, 7 tables, 6 plates and 2 appendices.
- YAMANAKA, H., Y. NISHIGAWA AND J. MORITA 1976. Summary Report on cruise of the R. V. *SHOYO MARU* in the North Arabian Sea. *FAO/UNDP Indian Ocean Programme Technica Report* No. 11, 47 p.

- YAMAZAKI, T. AND M. CHUENCHITPONG. 1981. Survey Report on squid stick-held dip net at Ban PHE District. *SEAFDEC Training Dept.* MP/No. 10 : 1-14.
- YAMAZAKI, T. P., MASTHAWBE AND S. SAKARANG. 1983. Survey Report on a new type of squid lift net. *SEAFDEC Training Dept.* TD/MP/15 : 1-16. June 1983.
- YAMASHITA, Y. 1976. The octopus Fishery of Hokkaido. Suppl. to the Report of the Expert Consultation on Fishing for Squid and other cephalopods. *FAO Fish. Rep.* (170) Suppl. 1, 142-143.
- YBOH, Q. L. AND Z. MERICAN 1978. Processing of non-commercial and low-cost fish in Malaysia. *Proc. Symp. Fish Utilization Technology and Marketing in the IPFC Region, 18th Session, Manila, Philippines* : 572-580
- YOUNG, R. E. 1975. A brief review of the biology of the oceanic squid, *Symplectoteuthis oualaniensis* (Lesson). *Comp. Biochem. Physiol.* 52 B : 141-143.
- YOUNG, J. Z. 1962. Courtship and mating by the coral reef octopus (*O. horridus*). *Proc. Zool. Soc. London*, 138 : 157-62.
- YOUNG, J. Z. 1965. The Central Nervous System of *Nautilus*. *Philos. Trans. R. Soc. Biol. Sci.*, 249 : 1-25.
- YOUNG, J. Z. 1971. Anatomy and Nervous system of *Octopus vulgaris*. Clarendon Press, Oxford.
- YOUNG, J. Z. 1977. Brain, behaviour and Evolution. *Symp. Zool. Soc. London*, 38 : 377-434.
- YOSHIKAWA, N. 1978. Fisheries in Japan. Squid and cuttlefish, Publ. by Japan Marine Products Photo Materials Association. Tokyo, 162 p.
- ZUEV, G. V. 1971. *Cephalopods from the northwestern part of the Indian Ocean, Moscow*, 223 pp.
- ZUEV, G. V. AND K. N. NESS 1971. *Squid (Biology and Fishery)*, *Pishchevaya Promyshlennost Press, Moscow*.
- ZUPANOVIC, S. AND S. Q. MOHIUDDIN 1973. A survey of the fishery resources in the northeastern part of the Arabian Sea. *J. mar. Biol. Ass. India*, 15 (2) : 496-537.