

A PRAWN WITH DOUBLE ROSTRUM

DURING routine examination of prawn samples from offshore catches on the 8th December, 1968, afternoon, the authors came across a male specimen of prawn having an additional rostrum (Fig. a & b). In all other respects the specimen has identical characters of *Parapenaeopsis stylifera* (M. Edward).

The sample was collected from a mechanised fishing vessel operating trawl net off Veraval, approximately in 20 fathoms depth. The specimen measured 87 mm. in total length from the tip of rostrum to the end of telson.

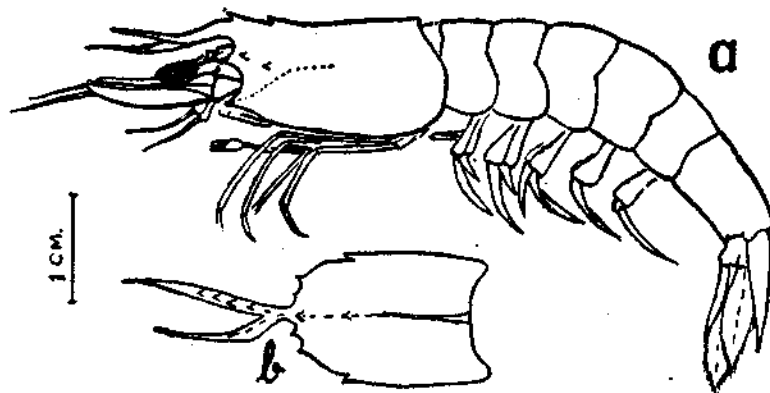


FIG. 1. a, Lateral view of the specimen, b, Dorsal view of carapace.

The rostrum having six teeth on the dorsal side appears to be the regular one, while the one without any tooth, an additional rostrum. This abnormal rostrum originates from the regular rostrum on the left side just above the base of eye stalk and the anterior end of carapace. It extends up to the tip of the antennal scale. The real rostrum has been pushed slightly from its normal position due to the formation of abnormal one. No other abnormality was noted in the specimen.

Central Marine Fisheries Research Institute,
Mandapam Camp.

V. M. DESHMUKH
KUBER VIDYASAGAR