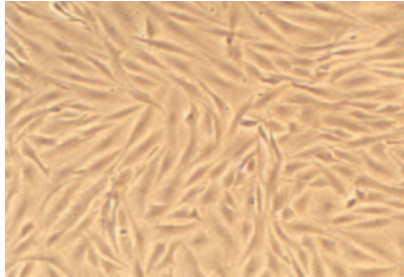


Three cell lines developed from the grouper

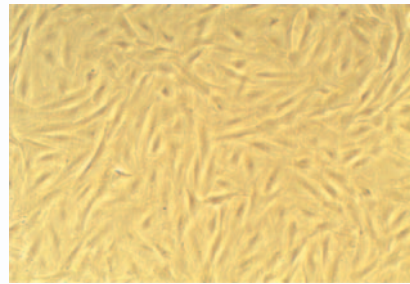
Three successful cell lines have been developed from the spleen and gill tissues of the Malabar grouper, *Epinephelus malabaricus*. EM4SpEx derived from explants of spleen tissue has been passaged 133 times over a period of 3 years. EM2GEx and EM3GEx both initiated from gill explants have crossed 122 and 138 passages respectively over 3 years. All the cell lines grow at an optimum temperature of 28 ± 2 °C in Leibovitz L-15 medium supplemented with 2 to 5% foetal bovine serum. The cell lines have also been characterised by karyotyping. All the three lines have been successfully cryo-preserved in liquid



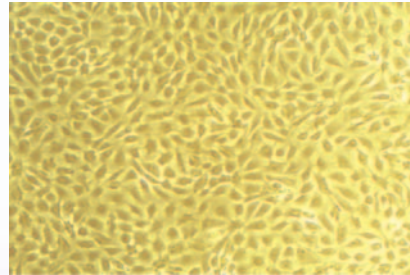
EM4SpEx

nitrogen and on revival shows very good survival rate.

(K.S. Sobhana,
Demersal Fisheries Division)



EM2GEx



EM3GEx