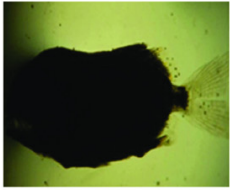


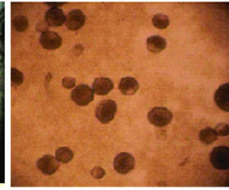
1) Marine velvet disease (*Amyloodinium ocellatum*)



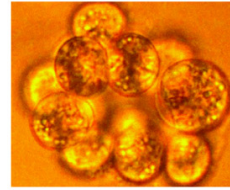
Pompano fingerlings infestation by *Amyloodinium ocellatum*



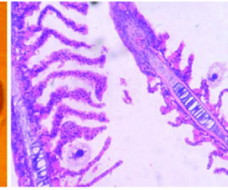
Gill infested with adult feeding stage of trophonts



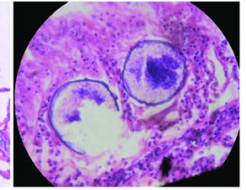
Free swimming dinospores



Tomont-Reproductive stage

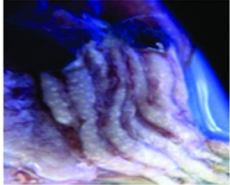


Histology: Gill infested with feeding stage of trophonts

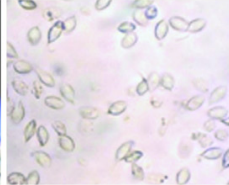


Histology: Gill infested with encysted trophonts

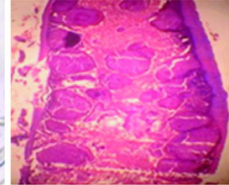
2) Myxosporidiosis by *Henneguya* spp



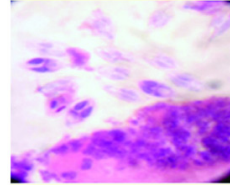
Intestine: occluded by *Henneguya* spp plasmodium



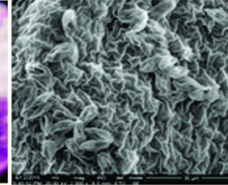
Wet smear: Spores of *Henneguya* spp



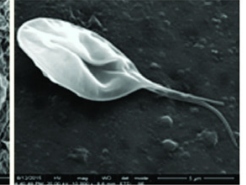
Histopathology: Intestine occluded by *Henneguya* spp



Plasmodium with spores



SEM: Intestinal lumen with lot of *Myxospores*

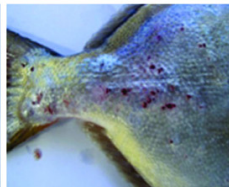


SEM image of single *Henneguya* spp

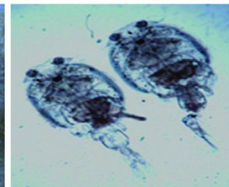
3) Pompano infestation by *Caligus* spp (*C.cossacki* Basset smith, 1898)



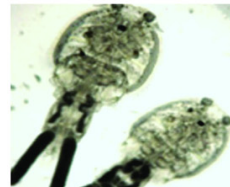
Caligus eggs deposited with in the cornea



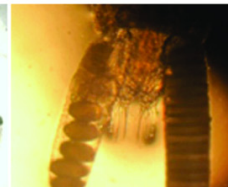
Caligus infestation with penetrated wound in the skin



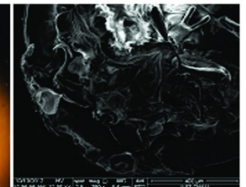
Caligus spp male



Caligus spp female

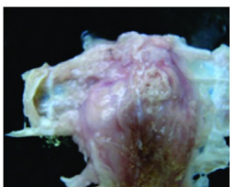


Caligus spp female: Gravid eggs



SEM-*Caligus* spp ventral position with presence of lunules

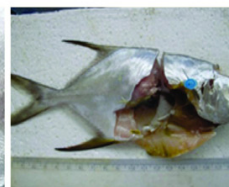
4) Muscle atrophy and necrosis by *Bacillus cereus*



Area of muscle necrosis and emaciation



Granulomatous necrosis of the muscle



Granulomatous necrotic disease by *Bacillus cereus*

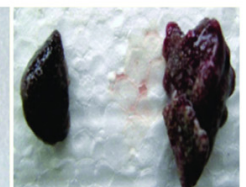
5) Granulomatous necrotic disease by *Bacillus cereus*



Granulomatous necrosis

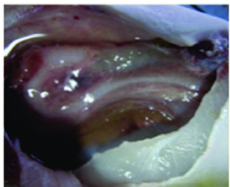


Spleen: Granulomatous white necrotic foci

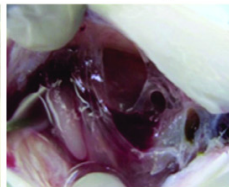


kidney and spleen: Granulomatous white necrotic foci

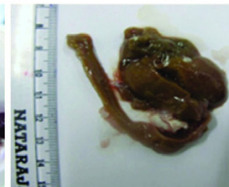
6) Septicaemic infection by *Streptococci* spp



Ascites



Generalized congestion



Liver: Necrosis and congestion

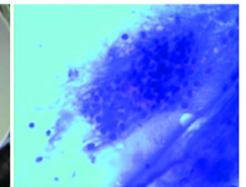
7) Papillary cyst adenoma



Papillary growth on the tail

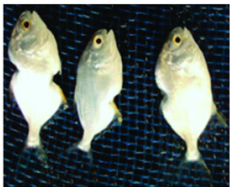


Tail: tumour growth and swelling

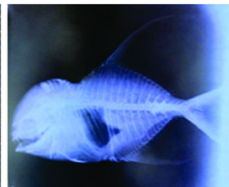


Cytology smear-cell clumps and hyper chromasia

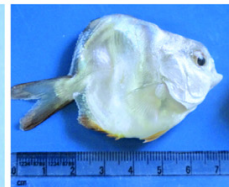
8) Pompano fingerlings anomalies



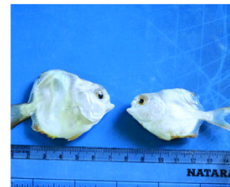
Musculo skeletal anomaly



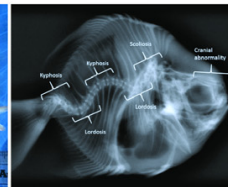
Radiograph: Musculo skeletal anomaly



Pompano: KLS complex shows kyphosis lordosis and scoliosis in the vertebral column with severe cranial developmental anomaly



KLS complex



Radiograph: KLS complex shows kyphosis, lordosis and scoliosis in the vertebral column



Pompano ovary: Unilateral hypertrophy