

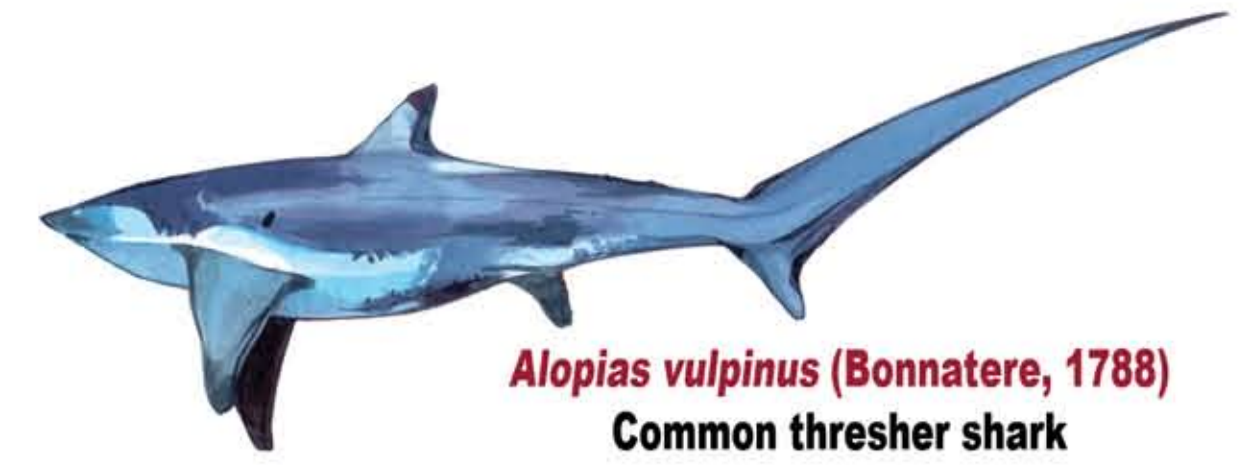
## FAMILY: ALOPIIDAE



*Alopias pelagicus* Nakumara, 1935  
Pelagic thresher shark



*Alopias superciliosus* Lowe, 1839  
Big eye thresher shark



*Alopias vulpinus* (Bonnatere, 1788)  
Common thresher shark

## FAMILY: CARCHARHINIDAE



*Carcharhinus limbatus* (Müller & Henle, 1839)  
Blacktip shark



*Carcharhinus falciformis* (Müller & Henle, 1839)  
Silky shark



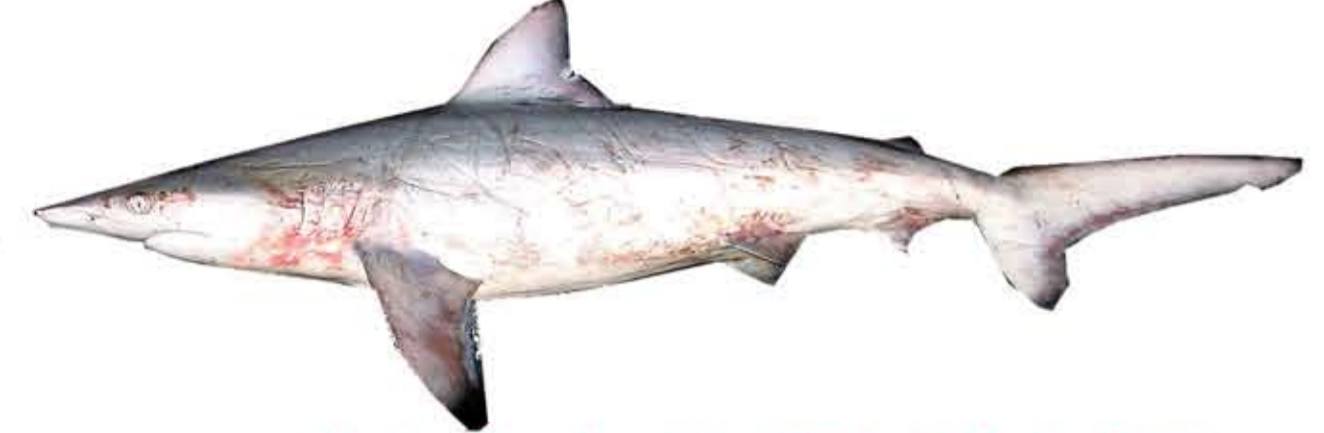
*Carcharhinus brevipinna* (Müller & Henle, 1839)  
Spinner shark



*Carcharhinus melanopterus* (Quoy & Gaimard, 1824)  
Blacktip reef shark



*Carcharhinus macroti* (Müller & Henle, 1839)  
Hardnose shark



*Carcharhinus hemiodon* (Müller & Henle, 1839)  
Pondicherry shark



*Carcharhinus sorrah* Müller & Henle, 1839  
(Spot tail shark)



*Carcharhinus leucas* (Müller & Henle, 1839)  
Bull shark



*Carcharhinus longimanus* (Poey, 1861)  
Oceanic whitetip shark



*Carcharhinus obscurus* (Leseur, 1818)  
Dusky shark



*Carcharhinus amblyrhynchoides* (Whitley, 1934)  
Graceful shark



*Scoliodon laticaudus* (Müller & Henle, 1839)  
Spadenose shark



*Loxodon macrorhinus* Müller & Henle, 1839  
Sliteye shark

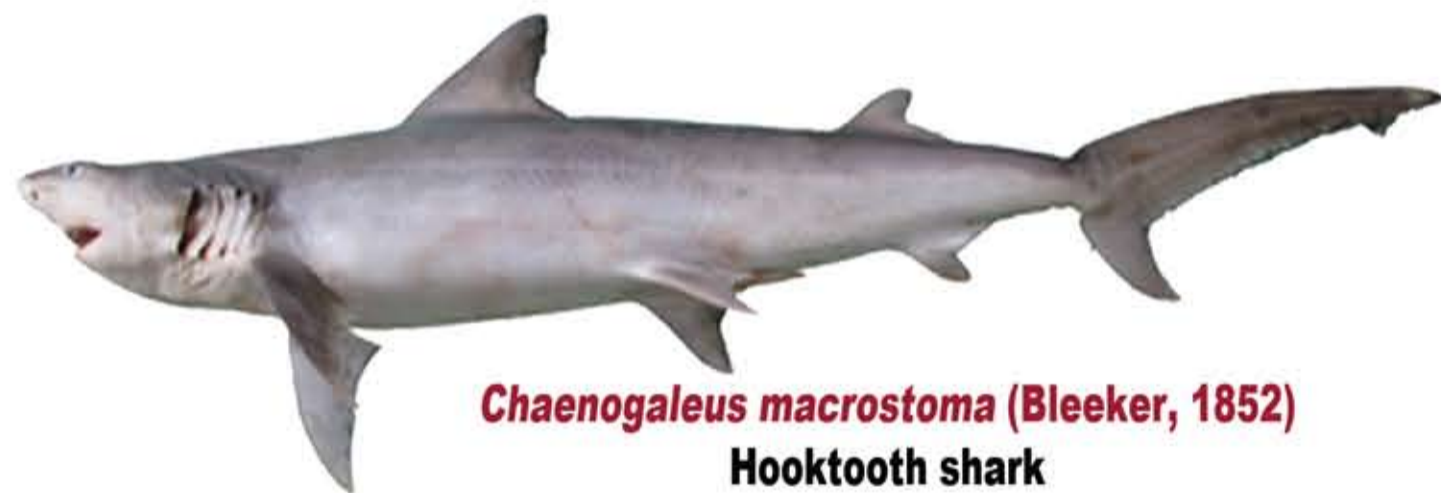


*Rhizoprionodon acutus* (Ruppell, 1837)  
Milk shark



*Galeocerdo cuvier* (Peron & Lesuer, 1822)  
Tiger shark

## FAMILY: HEMIGALEIDAE



*Chaenogaleus macrostoma* (Bleeker, 1852)  
Hooktooth shark



*Isurus paucus* Guitart Manday, 1966  
Longfin mako shark



*Isurus oxyrinchus* Rafinesque, 1810  
Shortfin mako shark

## FAMILY: HEMISCYLLIDAE



*Chiloscylidium arabicum* Gubanov, 1980  
Arabian carpet shark



*Chiloscylidium griseum* Müller & Henle, 1839  
Grey bamboo shark



*Chiloscylidium indicum* (Gmelin, 1789)  
Slender bamboo shark

## FAMILY: SPHYRIDAE



*Eusphyra blochii* (Cuvier, 1816)  
Winghead shark



*Sphyrna zygaena* (Linnaeus, 1758)  
Smooth hammerhead shark



*Sphyrna lewini* (Griffith & Smith, 1834)  
Scalloped hammerhead shark

## FAMILY: TRIAKIDAE



*Iago omanensis* (Norman, 1939)  
Bigeye hound shark



*Mustelus mosis* Hemprich & Eherenberg, 1899  
Bigeye hound shark

## FAMILY: RHINCODONTIDAE



*Rhincodon typus* Smith, 1829  
Whale shark